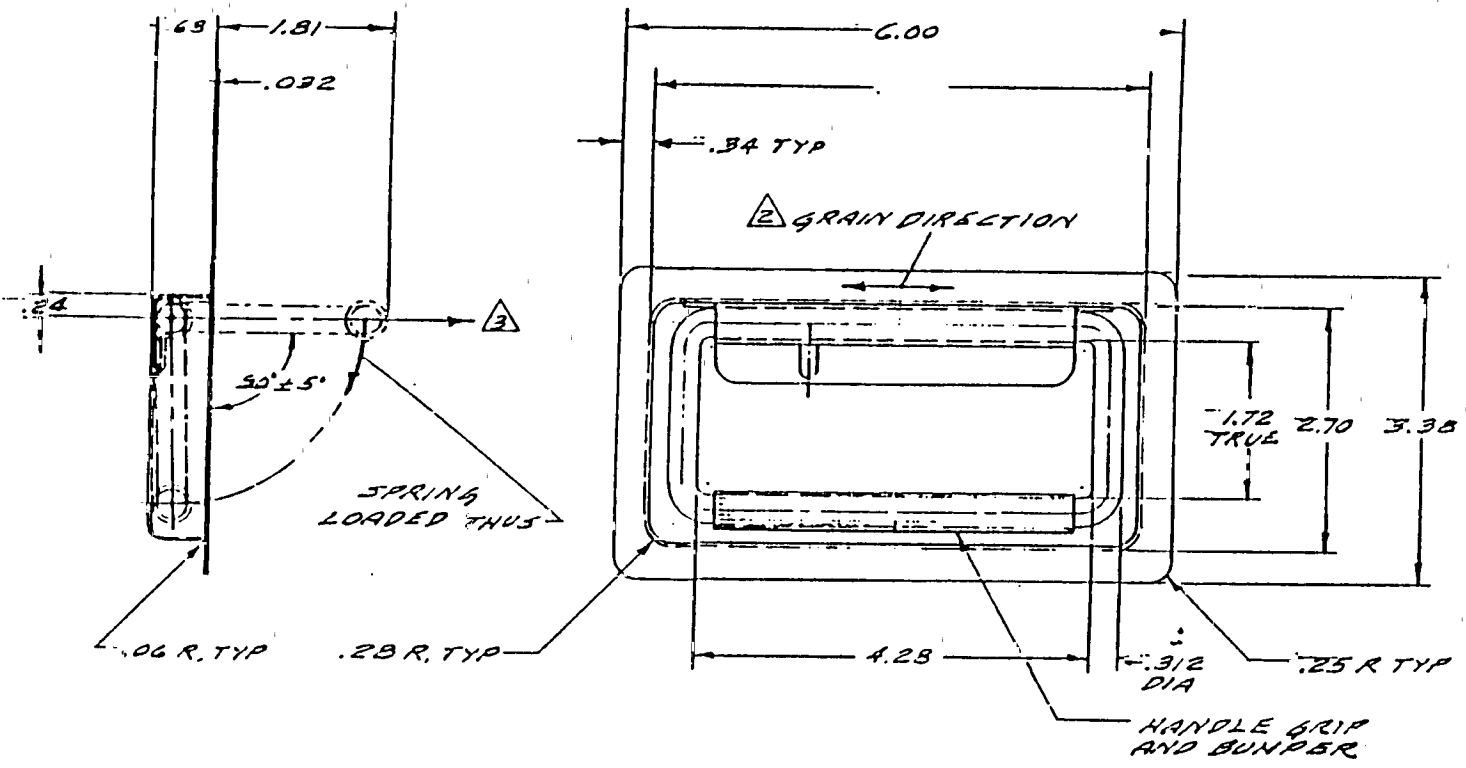


REVISIONS			
SYM	DESCRIPTION	DATE	BY
	EFFECTIVE ON	DISP	EXIST PARTS
			APPROVAL



⚠️ LOAD CAPACITY: 700 LBS. MIN.
 ⚠️ FINISH: PASSIVATE, SATIN BRUSH FLANGE, FACE ONLY.
 ⚠️ NATL: 304 CRES. GRIP; NEOPRENE.
 NOTES: UNLESS OTHERWISE SPECIFIED

PART NUMBER	DESCRIPTION	MATERIAL OR NOTE
-1	HANDLE ASSY. 1/2	

LIST OF MATERIAL		CONTRACT NO.	
UNLESS OTHERWISE NOTED DIMENSIONS ARE IN INCHES. TOLERANCES ON DECIMALS XX = .03 XXX = .010 ANGLES ± 0°-30' DRILLED HOLES PER ANSI B92	SURFACE ROUGHNESS	✓	
HEAT TREAT	FINISH	NOTED	
INSPECT	REF. NO.		

SKYLOCK INDUSTRIES, INC.	
HANDLE ASSEMBLY	
SIZE	CODE IDENT NO.
C.51941	20115
SCALE 1/1	WT CALC.. WT ACT. SHEET 1 OF 1

2015