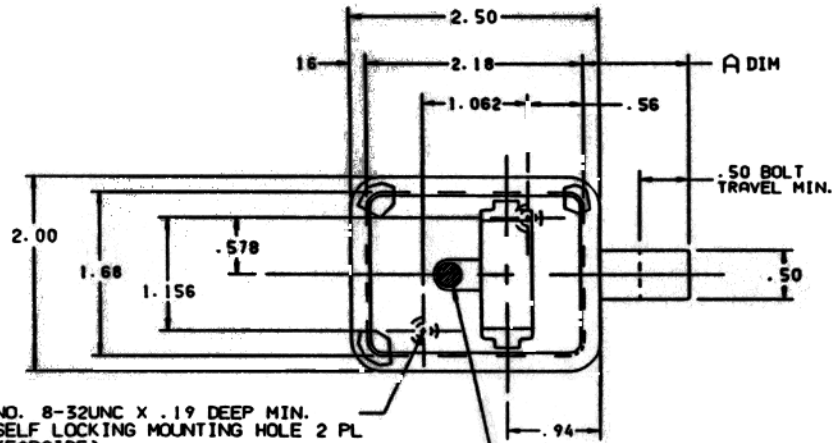


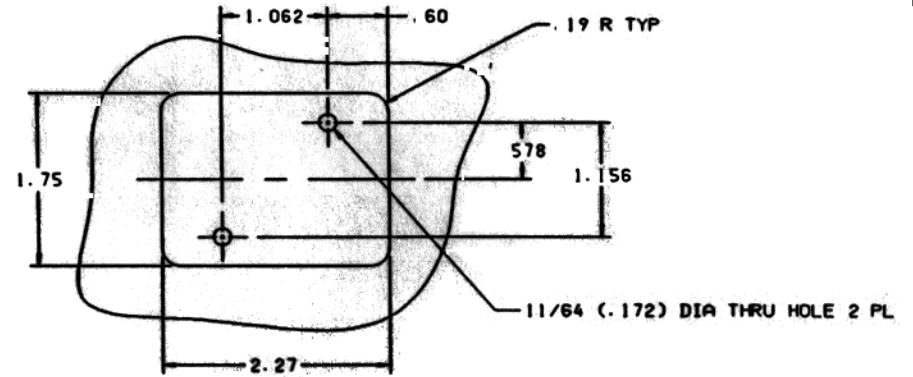
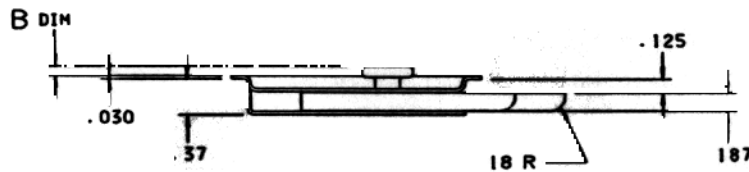
THE INFORMATION AND DESIGN ORIGINATED BY AND IS THE PROPERTY OF SKYLARK INDUSTRIES INCORPORATED. SKYLARK INDUSTRIES INCORPORATED RESERVES ALL PATENT, REPRODUCTION, USE AND SALES RIGHTS THEREIN EXCEPT TO THE EXTENT RIGHTS ARE EXPRESSLY GRANTED TO OTHERS. THE FOREGOING DOES NOT APPLY TO VENDOR PROPRIETARY PARTS.

NOTES: UNLESS OTHERWISE SPECIFIED.

1. MAT'L: HANDLE: 6061-T6 ALUM. ALLOY. ALL OTHER COMPS: CRES.
2. FINISH: HANDLE: CLEAR ANODIZE. CRES.: CLEAN AND PASSIVATE.
3. DECORATIVE FINISH: SATIN BUFF.
4. STATIC LOAD 600 LBS.
5. BOLT IS DETENTED IN EXTENDED AND RETRACTED POSITIONS.



GREEN DOT IS SHOWN WHEN BOLT IS EXTENDED-RED DOT IS SHOWN WHEN BOLT IS NOT FULLY LATCHED



DOOR CUTOUT INFORMATION

B DIM	A DIM	PART NO.	DESCRIPTION	MATERIAL	SIZE SPECIFICATION	ITEM NO.
.00	1.06	-21	LATCH			
.00	.81	-19	LATCH			
.12	1.06	-17	LATCH			
.22	1.06	-15	LATCH			
.12	.88	-13	LATCH			
.12	.91	-11	LATCH			
.12	1.12	-9	LATCH			
.22	1.22	-7	LATCH			
.12	.69	-5	LATCH			
.12	.81	-3	LATCH			
.22	.81	-1	LATCH			

UNLESS OTHERWISE SPECIFIED DIMENSIONS ARE IN INCHES		DRAWN BY T. CSIK		9-27-93	
TOLERANCES UNLESS OTHERWISE SPECIFIED		CHECKED		SKYLARK INDUSTRIES INCORPORATED MONROVIA CALIFORNIA U.S.A.	
DO NOT SCALE THIS DRAWING		APPROVAL T. CSIK		9-27-93	
MATERIAL - FINISH		USED ON		LATCH ASSY - DEADBOLT	
NEXT ASSY		SCALE 1:1		REV. NC	
FINAL ASSY		SHEET 1 OF 1		PART NO. 20834	

ZONE	LTR	DESCRIPTION	DATE	APPROVED
		NC PRODUCTION RELEASE	5-27-93	T.C.