

THE INFORMATION AND DESIGN HEREIN WAS ORIGINATED BY AND IS THE PROPERTY OF SKYLOCK INDUSTRIES INCORPORATED. SKYLOCK INDUSTRIES INCORPORATED RESERVES ALL PATENT, PROPRIETARY, DESIGN MANUFACTURING, REPRODUCTION, USE AND SALES RIGHTS THERE TO, AND TO ANY ARTICLE DISCLOSED THEREIN EXCEPT TO THE EXTENT RIGHTS ARE EXPRESSLY GRANTED TO OTHERS. THE FOREGOING DOES NOT APPLY TO VENDOR PROPRIETARY PARTS.


REVISIONS				
ZONE	LTR	DESCRIPTION	DATE	APPROVED
	V	REDRAWN, ADDED -91, -93	5-28-96	T. CSIK
	W	REVISED G/N 7 THRU 10	7-15-97	T. CSIK
	X	SEE ECN X	2/8/99	T. CSIK
	Y	SEE ECN Y		
	Z	SEE ECN Z	9/14/99	E. WELSH

- NOTES: UNLESS OTHERWISE SPECIFIED.
- MAT'L REF.: TURN; 6061-T6//T651 ASTM B-221, OR EQUIV.
ALL OTHER PARTS; 303 CRES, COND. A, PER AMS-5640N, OR EQUIV.
 - FINISH REF.: ALUM. PARTS; CLEAR ANODIZE PER MIL-A-8625, TYPE II, CLASS 1, OR EQUIV.
CRES PARTS; PASSIVATE PER AMS-QQ-P-35, TYPE II, OR EQUIV.
 - FINISH REF.: SATIN BRUSH LENGTHWISE TO PART SURFACE AND CLEAR-ANODIZE PER MIL-A-8625, TYPE II, CLASS 1, OR EQUIV.
 - FINISH REF.: BRIGHT POLISH, AND ANODIZE PER MIL-A-8625, TYPE II, CLASS 2 OR EQUIV, DYED CANDY APPLE RED, .
 - THE FOLLOWING STATIC LOAD IS FOR REFERENCE USE ONLY. IT IS PROVIDED FOR CUSTOMER ENGINEERING TO DETERMINE THE GENERAL SUITABILITY OF THE PRODUCT FOR ITS INTENDED USE. ALTHOUGH SKYLOCK IS PROVIDING THE REFERENCE STATIC LOAD, THE CUSTOMER IS ULTIMATELY RESPONSIBLE FOR CERTIFICATION OF THE PRODUCT FOR ITS SPECIFIC APPLICATION. REFERENCE STATIC LOAD: 1000 LBS. MAX.
 - REMOVED.
 - ROTATION 360°, DETENTED EVERY 90°.
 - ROTATION 90° L. H., DETENTED EACH 90°.
 - ROTATION 90° R. H., DETENTED EACH 90°.
 - ROTATION 180°, DETENTED EACH 90°.
 - FINISH NOTED SURFACE PER WPS306 .010 THK. MIN., COLOR GRAY.
 - APPLICABLE TO FAA-PMA REPLACEMENT OR MODIFICATION PARTS ONLY.
PER FAR 45.15, PARTS WILL BE IDENTIFIED WITH:
 - FAA-PMA.
 - SKYLOCK IND. INC.
 - PART NO.
 - AIRCRAFT INSTALLATION ELIGIBILITY.

(L/M CONT'D ON SHT. 2)

	-45	RETAINER	$\triangle 4 \triangle 10$	180°	1.19	.94	A	120197-45
	-43	RETAINER	$\triangle 3 \triangle 8 \triangle 11$	90°	1.19	.94	A	120197-43
	-41	RETAINER	$\triangle 4 \triangle 8$	90°	1.75	.94	A	120197-41
	-39	RETAINER	$\triangle 3 \triangle 8$	90°	1.19	1.33	D	120197-39
	-37	RETAINER	$\triangle 3 \triangle 10$	180°	2.33	.94	A	120197-37
	-36	RETAINER	$\triangle 3 \triangle 8$	90°	2.33	.94	A	120197-36
	-35	RETAINER	$\triangle 3 \triangle 9$	90°	2.33	.94	A	120197-35
	-33	RETAINER	$\triangle 3 \triangle 10$	180°	1.19	.94	A	120197-33
	-32	RETAINER	$\triangle 3 \triangle 9$	90°	1.19	.94	A	120197-32
	-31	RETAINER	$\triangle 3 \triangle 8$	90°	1.19	.94	A	120197-31
	-30	RETAINER	$\triangle 3 \triangle 9$	90°	1.75	.94	A	120197-30
	-29	RETAINER	$\triangle 3 \triangle 8$	90°	1.75	.94	A	120197-29
	-28	RETAINER	$\triangle 4 \triangle 9$	90°	1.19	.94	A	120197-28
	-27	RETAINER	$\triangle 4 \triangle 8$	90°	1.19	.94	A	120197-27
	-25	RETAINER	$\triangle 4 \triangle 7$	360°	1.19	1.75	C	120197-25
	-23	RETAINER	$\triangle 4 \triangle 7$	360°	2.33	.94	A	120197-23
	-21	RETAINER	$\triangle 4 \triangle 7$	360°	1.625	.94	A	120197-21
	-19	RETAINER	$\triangle 4 \triangle 7$	360°	1.19	1.88	B	120197-19
	-17	RETAINER	$\triangle 4 \triangle 9$	90°	1.56	.94	A	120197-17
	-15	RETAINER	$\triangle 4 \triangle 8$	90°	1.19	.94	A	120197-15
	-13	RETAINER	$\triangle 4 \triangle 7$	360°	1.19	.94	A	120197-13
	-11	RETAINER	$\triangle 3 \triangle 7$	360°	1.19	1.75	C	120197-11
	-9	RETAINER	$\triangle 3 \triangle 7$	360°	2.33	.94	A	120197-9
	-7	RETAINER	$\triangle 3 \triangle 7$	360°	1.625	.94	A	120197-7
	-5	RETAINER	$\triangle 3 \triangle 7$	360°	1.19	1.88	B	120197-5
	-4	RETAINER	$\triangle 3 \triangle 9$	90°	1.56	.94	A	120197-4
	-3	RETAINER	$\triangle 3 \triangle 8$	90°	1.56	.94	A	120197-3
	-1	RETAINER	$\triangle 3 \triangle 7$	360°	1.19	.94	A	120197-1

SCREW TAB.	
A	NAS603-15
B	NAS603-30
C	NAS603-28
D	NAS603-22
E	NAS603-18
F	NAS603-40

QTY REQD	PART NO.	DESCRIPTION	MATERIAL	SIZE	SPECIFICATION	A DIM	B DIM	SCREW	MAKE FROM
PARTS LIST									
UNLESS OTHERWISE SPECIFIED			DRAWN BY SINGELIKAS		5-18-87		 SKYLOCK INDUSTRIES INCORPORATED MONROVIA CALIFORNIA U. S. A.		
DIMENSIONS ARE IN INCHES			CHECKED T. CSIK		2/8/99				
TOLERANCES ON			ENGINEER T. CSIK		2/8/99				
DECIMALS ANGLES DRILLED HOLES			MFG P. MATSUOKA		2/10/99				
.X ± .1 ± 0° 30' AND 10387			QC J. VIVIRITO		2/25/99				
.XX ± .03									
.XXX ± .010									
DO NOT SCALE THIS DRAWING									
MATERIAL - FINISH			USED ON		SIZE C		CODE IDENT. NO. 51941		DRAWING NO. 20197
NEXT ASSY									REV. Z
MANUFACTURE IN ACCORDANCE WITH SKYLOCK IND. INC., QUALITY CONTROL MANUAL QC.001									
					SCALE NONE		VT.		SHEET 1 OF 3

4

3

2

1

THE INFORMATION AND DESIGN HEREIN WAS ORIGINATED BY AND IS THE PROPERTY OF SKYLOCK INDUSTRIES INCORPORATED. SKYLOCK INDUSTRIES INCORPORATED RESERVES ALL PATENT, PROPRIETARY, DESIGN MANUFACTURING, REPRODUCTION, USE AND SALES RIGHTS THERE TO, AND TO ANY ARTICLE DISCLOSED THEREIN EXCEPT TO THE EXTENT RIGHTS ARE EXPRESSLY GRANTED TO OTHERS. THE FOREGOING DOES NOT APPLY TO VENDOR PROPRIETARY PARTS.

REVISIONS				
ZONE	LTR	DESCRIPTION	DATE	APPROVED
		SEE SHT. 1 FOR NOTES		

	-93	RETAINER	$\triangle_{4/10}$	180°	1.00	.94	A	120197-93
	-91	RETAINER	$\triangle_{3/10}$	180°	1.19	1.94	F	120197-91
	-89	RETAINER	$\triangle_{4/8}$	90°	1.56	.94	A	120197-89
	-87	RETAINER	$\triangle_{3/10}$	180°	1.56	.94	A	120197-87
	-85	RETAINER	$\triangle_{3/10}$	180°	1.625	.94	A	120197-85
	-84	RETAINER	$\triangle_{4/8}$	90°	2.68	.94	A	120197-84
	-83	RETAINER	$\triangle_{4/9}$	90°	2.68	.94	A	120197-83
	-81	RETAINER	$\triangle_{4/9}$	90°	2.19	.94	A	120197-81
	-80	RETAINER	$\triangle_{4/9}$	90°	.94	.94	A	120197-80
	-79	RETAINER	$\triangle_{4/10}$	180°	.94	.94	A	120197-79
	-77	RETAINER	$\triangle_{4/10}$	180°	1.00	.94	A	120197-77
	-75	RETAINER	$\triangle_{4/8}$	90°	2.33	.94	A	120197-75
	-73	RETAINER	$\triangle_{4/9}$	90°	2.33	.94	A	120197-73
	-71	RETAINER	$\triangle_{4/9}$	90°	1.75	.94	A	120197-71
	-69	RETAINER	$\triangle_{3/9/11}$	90°	1.75	.94	A	120197-69
	-67	RETAINER	$\triangle_{4/10}$	180°	1.625	.94	A	120197-67
	-65	RETAINER	$\triangle_{4/10}$	180°	.812	.94	A	120197-65
	-63	RETAINER	$\triangle_{4/10}$	180°	1.377	.94	A	120197-63
	-61	RETAINER	$\triangle_{4/10}$	180°	2.19	.94	A	120197-61
	-59	RETAINER						120197-59
	-57	RETAINER	$\triangle_{4/10}$	180°	4.19	.94	A	120197-57
	-56	RETAINER	$\triangle_{4/8}$	90°	1.625	.94	A	120197-56
	-55	RETAINER	$\triangle_{4/9}$	90°	1.625	.94	A	120197-55
	-53	RETAINER	$\triangle_{3/8}$	90°	1.19	1.12	E	120197-53
	-51	RETAINER	$\triangle_{3/7}$	360°	1.62	1.75	C	120197-51
	-50	RETAINER	$\triangle_{3/9}$	90°	1.56	1.94	F	120197-50
	-49	RETAINER	$\triangle_{3/7}$	360°	1.62	.94	A	120197-49
	-47	RETAINER	$\triangle_{3/7}$	360°	1.19	1.75	C	120197-47
					A DIM	B DIM	SCREW	MAKE FROM

QTY REQD	PART NO.	DESCRIPTION	MATERIAL	SIZE	SPECIFICATION
PARTS LIST					

 SKYLOCK INDUSTRIES INCORPORATED
MONROVIA CALIFORNIA U. S. A.

20197 RETAINER

SIZE	CODE IDENT. NO.	DRAWING NO.	REV.
C	51941	20197	Z
SCALE	NONE	VT.	SHEET 2 OF 3

4

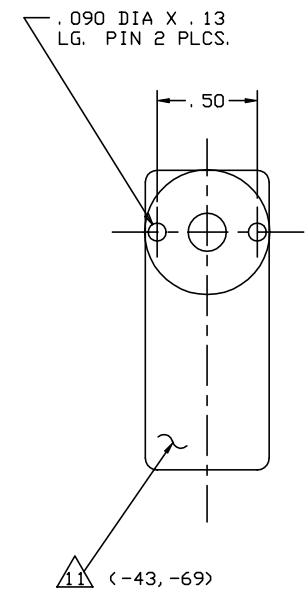
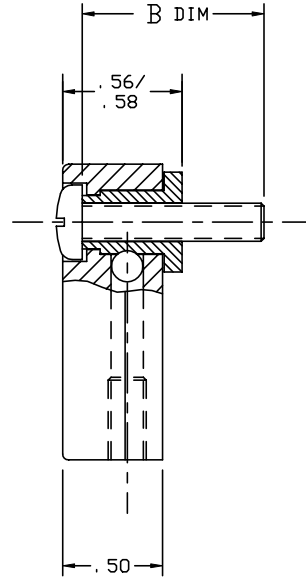
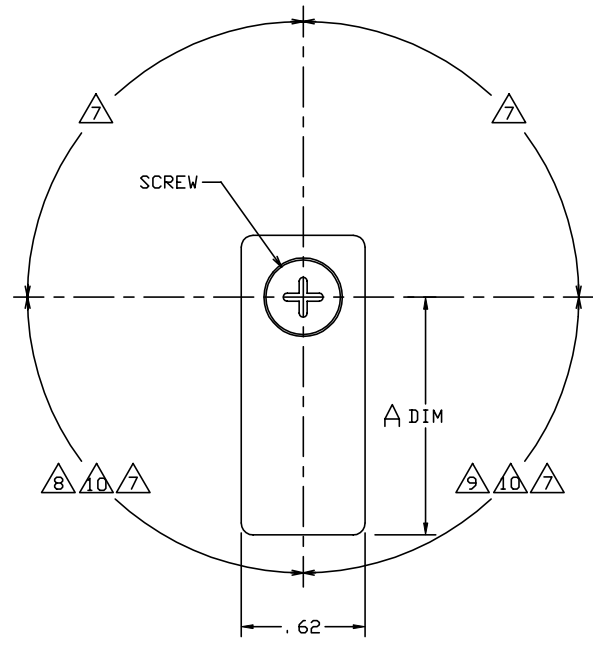
3

2


1

THE INFORMATION AND DESIGN HEREIN WAS ORIGINATED BY AND IS THE PROPERTY OF SKYLOCK INDUSTRIES INCORPORATED. SKYLOCK INDUSTRIES INCORPORATED RESERVES ALL PATENT, PROPRIETARY, DESIGN MANUFACTURING, REPRODUCTION, USE AND SALES RIGHTS THERE TO, AND TO ANY ARTICLE DISCLOSED THEREIN EXCEPT TO THE EXTENT RIGHTS ARE EXPRESSLY GRANTED TO OTHERS. THE FOREGOING DOES NOT APPLY TO VENDOR PROPRIETARY PARTS.

REVISIONS				
ZONE	LTR	DESCRIPTION	DATE	APPROVED
		SEE SHT. 1 FOR NOTES		



TYPICAL RETAINER

 SKYLOCK INDUSTRIES INCORPORATED MONROVIA CALIFORNIA U. S. A.			
20197 RETAINER			
SIZE	CODE IDENT. NO.	DRAWING NO.	REV.
C	51941	20197	Z
SCALE	VT.		SHEET 3 OF 3
2: 1			