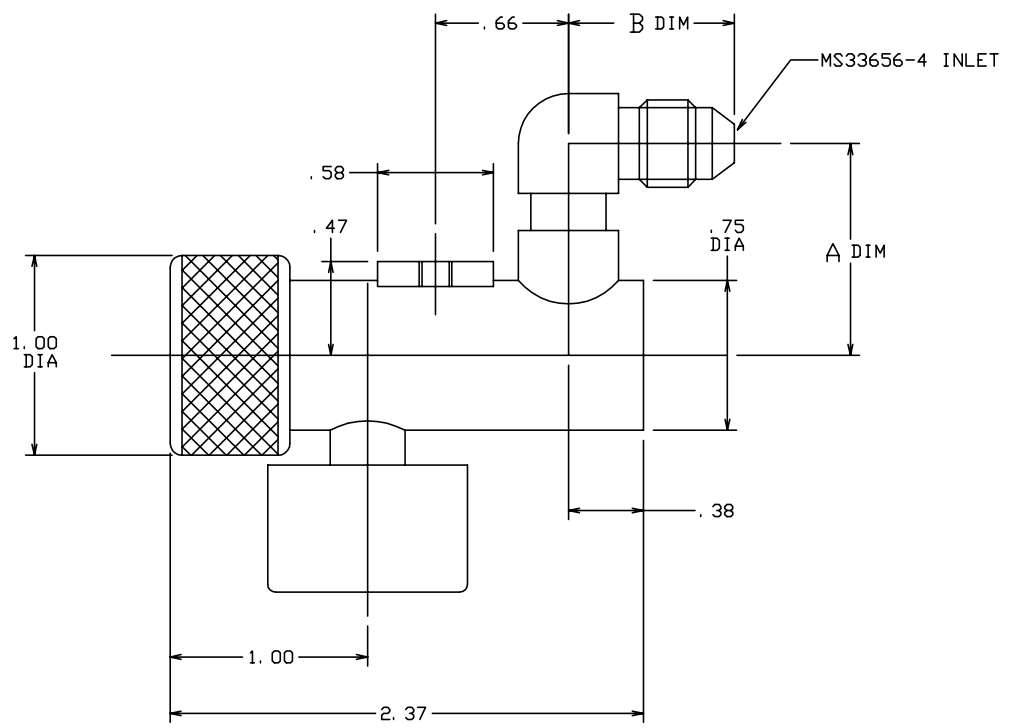
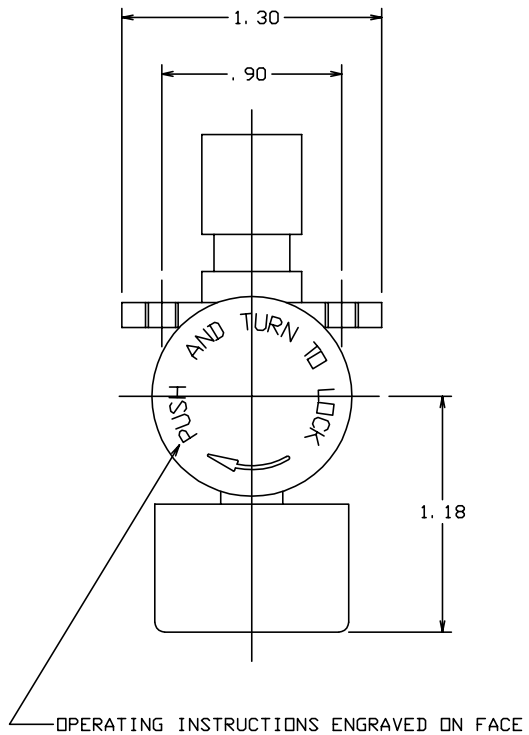



THE INFORMATION AND DESIGN HEREIN WAS ORIGINATED BY AND IS THE PROPERTY OF SKYLOCK INDUSTRIES INCORPORATED. SKYLOCK INDUSTRIES INCORPORATED RESERVES ALL PATENT, PROPRIETARY, DESIGN MANUFACTURING, REPRODUCTION, USE AND SALES RIGHTS THERE TO, AND TO ANY ARTICLE DISCLOSED THEREIN EXCEPT TO THE EXTENT RIGHTS ARE EXPRESSLY GRANTED TO OTHERS. THE FOREGOING DOES NOT APPLY TO VENDOR PROPRIETARY PARTS.

REVISIONS				
ZONE	LTR	DESCRIPTION	DATE	APPROVED
	NC	PRODUCTION RELEASE	8-20-96	T. CSIK



3. OPERATION: CONTINUOUS FLOW; PUSH AND TURN BUTTON TO LOCKED POSITION, RELEASE OF BUTTON FROM LOCKED POSITION WILL STOP FLOW, INTERMITTENT FLOW; PUSH BUTTON.
2. FINISH: SPIGOT BODY, AERATOR: SATIN NICKEL PLATE, BUTTON: SATIN BRUSH.
1. MAT'L: AERATOR BODY, INLET FITTING: BRASS, ALL OTHER COMPONENTS: CRES.
- NOTES: UNLESS OTHERWISE SPECIFIED

.83	1.06	-401	SPIGOT ASSY	
B	A	PART NO.	DESCRIPTION	ITEM NO.

PARTS LIST					
UNLESS OTHERWISE SPECIFIED	DRAWN BY T. CSIK	2-19-96	 SKYLOCK INDUSTRIES INCORPORATED MONROVIA CALIFORNIA U. S. A.		
DIMENSIONS ARE IN INCHES	CHECKED				
TOLERANCES ON	ENGINEER				
DECIMALS ANGLES DRILLED HOLES	PROJECT				
.X ± .1 ± 0° 30' AND 10387	APPROVAL		SPIGOT ASSY		
.XX ± .03					
.XXX ± .010					
DO NOT SCALE THIS DRAWING	APPROVAL				
MATERIAL - FINISH	USED ON	SIZE	CODE IDENT. NO.	DRAWING NO.	REV.
NEXT ASSY		C	51941	90090	NC
FINAL ASSY		SCALE	2: 1	VT.	SHEET 1 OF 1