

THREAD AND DIMENSION DATA (ALL DIMENSIONS BEFORE PAINT)

PART NUMBER	THREAD T	A MAX	B MAX	D MIN	H MAX	R MIN	U DIA
CN623CR3P	.190-32 UNF	.948	.554	.312	.312	.125	.250-.312
CN623CR4P	.250-28 UNF	1.042	.650	.375	.357	.125	.312-.375

BASEPLATE MATERIAL AND FINISH DATA

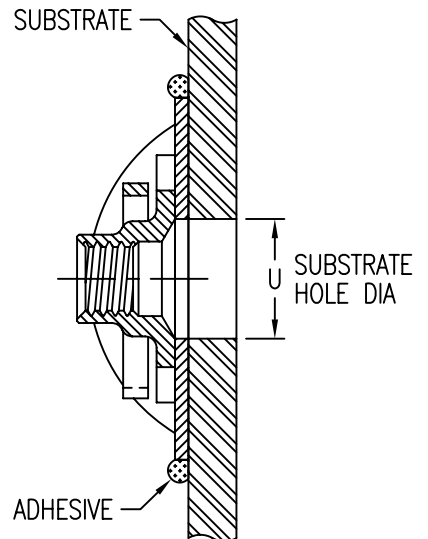
CODE	MATERIAL	FINISH
CR	A-286 CRES	PASSIVATE

NUT MATERIAL AND FINISH DATA (SEE CN621)

CODE	MATERIAL	FINISH	LUBRICATION
CR	A-286 CRES	PASSIVATE	DRI-FILM LUBE

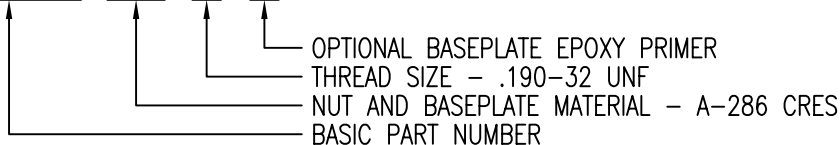
CLIP MATERIAL AND FINISH DATA (SEE CN622)

CODE	MATERIAL	FINISH
CR	XM-28 STAINLESS STEEL (UNS S24100)	PASSIVATE



EXAMPLE PART NUMBER

CN623 CR 3 P



UNLESS OTHERWISE SPECIFIED, ALL DIMENSIONS ARE IN INCHES AND TOLERANCES ARE AS SHOWN BELOW. DIMENSIONAL TOLERANCES AND SYMBOLS PER ANSI Y14.5M-1982.

PROPRIETARY PARTS SHOWN IN THIS DRAWING ARE THE SUBJECT OF ISSUED UNITED STATES AND FOREIGN PATENTS AND PATENTS PENDING. UNAUTHORIZED REPRODUCTION AND/OR DISTRIBUTION OF THIS DRAWING IS SPECIFICALLY PROHIBITED.

CLICK BOND

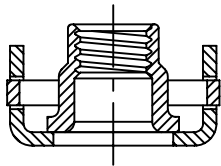
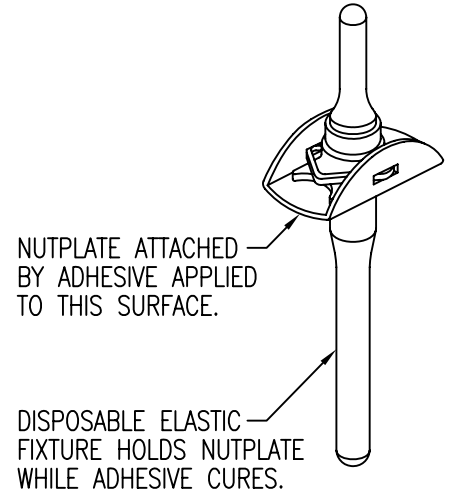
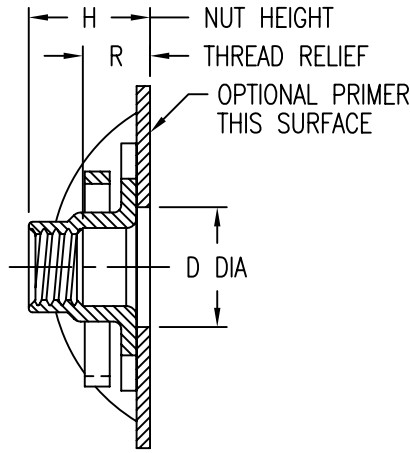
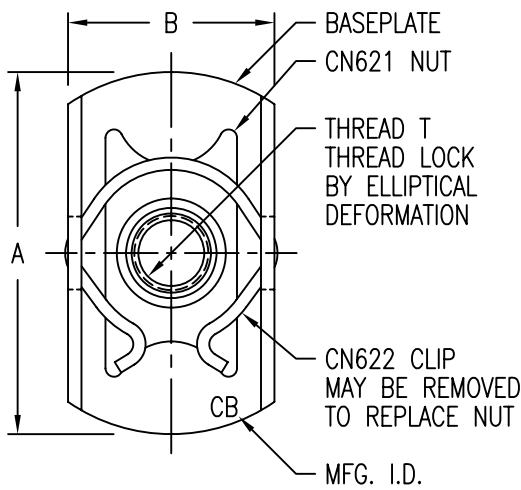
CARSON CITY
NEVADA 89706

CAD CN623-1

APPROVALS	DATE
DRAWN <i>DAC</i>	9SEP09
CHECKED <i>DAC/mtm</i>	9SEP09
RELEASED <i>CGH</i>	9SEP09
REVISED	

TITLE
NUTPLATE, TWO LUG, EXTENDED FLOAT

SIZE	CAGE CODE	DWG. NO.	REV.
A	66530	CN623	0
SCALE	2/1	9SEP09	SHEET 1 OF 2



RADIAL FLOAT OF NUT ELEMENT 1,5 FROM CENTER IN ANY DIRECTION (TOTAL FLOAT 3,0)

THREAD AND DIMENSION DATA (ALL DIMENSIONS BEFORE PAINT)

PART NUMBER	THREAD T	A MAX	B MAX	D MIN	H MAX	R MIN	U DIA
CN623CR5MP	M5 X 0,8	24,1	14,1	7,92	8,2	4,0	6,5-7,92
CN623CR6MP	M6 X 1,0	26,5	16,6	9,52	9,3	4,0	7,5-9,0

BASEPLATE MATERIAL AND FINISH DATA

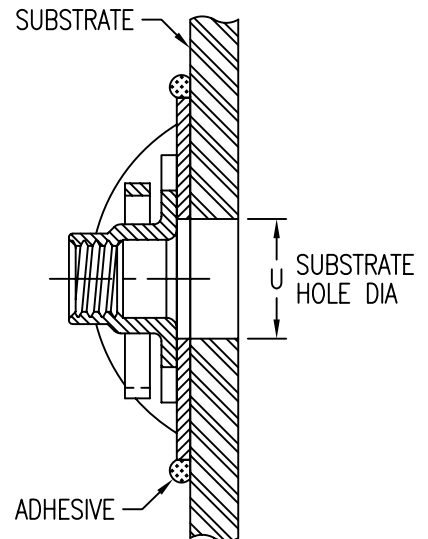
CODE	MATERIAL	FINISH
CR	A-286 CRES	PASSIVATE

NUT MATERIAL AND FINISH DATA (SEE CN621)

CODE	MATERIAL	FINISH	LUBRICATION
CR	A-286 CRES	PASSIVATE	DRI-FILM LUBE

CLIP MATERIAL AND FINISH DATA (SEE CN622)

CODE	MATERIAL	FINISH
CR	XM-28 STAINLESS STEEL (UNS S24100)	PASSIVATE



EXAMPLE PART NUMBER

CN623 CR 5M P

OPTIONAL BASEPLATE EPOXY PRIMER
 THREAD SIZE - M5 X 0,8
 NUT AND BASEPLATE MATERIAL - A-286 CRES
 BASIC PART NUMBER

UNLESS OTHERWISE SPECIFIED, ALL DIMENSIONS ARE IN MILLIMETERS AND TOLERANCES ARE AS SHOWN BELOW. DIMENSIONAL TOLERANCES AND SYMBOLS PER ANSI Y14.5M-1982.

PROPRIETARY PARTS SHOWN IN THIS DRAWING ARE THE SUBJECT OF ISSUED UNITED STATES AND FOREIGN PATENTS AND PATENTS PENDING. UNAUTHORIZED REPRODUCTION AND/OR DISTRIBUTION OF THIS DRAWING IS SPECIFICALLY PROHIBITED.

CLICK BOND

CARSON CITY
NEVADA 89706

CAD CN623-2 METRIC DIMENSIONS	
ANGLES	±1°
.X	±0,8
.XX	±0,25

APPROVALS	DATE
DRAWN <i>DAC</i>	9SEP09
CHECKED <i>DAC/mtm</i>	9SEP09
RELEASED <i>CGH</i>	9SEP09
REVISED	

TITLE NUTPLATE, TWO LUG, EXTENDED FLOAT			
SIZE A	CAGE CODE 66530	DWG. NO. CN623 (METRIC)	REV. 0
SCALE 2/1	9SEP09		SHEET 2 OF 2