

RADIAL FLOAT OF NUT ELEMENT 0,5 MIN FROM CENTER IN ANY DIRECTION.  
 NUT ELEMENT ELLIPTICALLY DEFORMED TO PROVIDE THREAD LOCK.

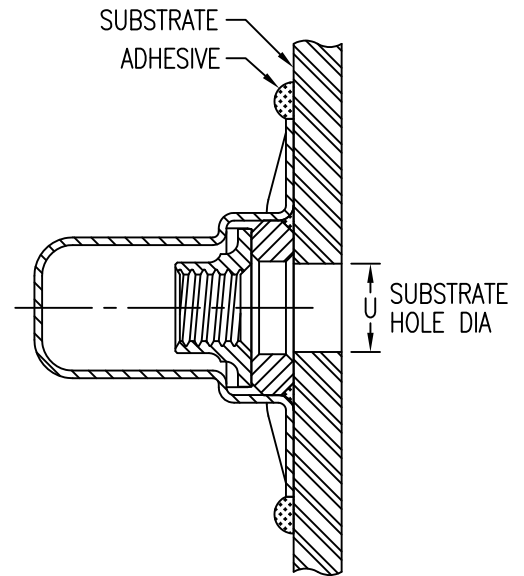
THREAD AND DIMENSION DATA (ALL DIMENSIONS BEFORE PAINT)

CODE	THREAD SIZE	A MAX	B MAX	C MAX	D MIN	F MAX	H MAX	R MIN	U DIA	COLOR CODE	TENSILE STRENGTH (kN MIN)
4M	M4 X 0,7	25,3	14,8	17,5	5,0	20,4	7,0	3,0	4,0-5,0	GREEN	7,6
5M	M5 X 0,8	25,3	14,8	17,5	6,0	20,4	8,0	3,0	5,0-6,0	BLUE	10,9
6M	M6 X 1,0	28,0	18,5	19,5	7,0	24,2	9,0	3,0	6,0-7,0	ORANGE	19,6

MATERIAL AND FINISH DATA

CODE	DOME AND NUT*	WASHER
ACR	A-286 CRES, PASSIVATE	ALUMINUM, ANODIZED
CR	A-286 CRES, PASSIVATE	A-286 CRES, PASSIVATE
CRM	A-286 CRES, PASSIVATE	316 CRES, PASSIVATE

\* DRI-FILM LUBE ON NUT ELEMENT ONLY



EXAMPLE PART NUMBER

CN610 CR 5M P

OPTIONAL EPOXY PRIMER ON BASEPLATE  
 THREAD SIZE - M5 X 0,8  
 NUTPLATE MATERIAL - A-286 CRES  
 BASIC PART NUMBER

UNLESS OTHERWISE SPECIFIED, ALL DIMENSIONS ARE IN MILLIMETERS AND TOLERANCES ARE AS SHOWN BELOW. DIMENSIONAL TOLERANCES AND SYMBOLS PER ANSI Y14.5M-1982.

PROPRIETARY PARTS SHOWN IN THIS DRAWING ARE THE SUBJECT OF ISSUED UNITED STATES AND FOREIGN PATENTS AND PATENTS PENDING. UNAUTHORIZED REPRODUCTION AND/OR DISTRIBUTION OF THIS DRAWING IS SPECIFICALLY PROHIBITED.

**CLICK BOND**

CARSON CITY  
 NEVADA 89706

CAD CN610-2 METRIC DIMENSIONS	
ANGLES	±1°
.X	±0,8
.XX	±0,25

APPROVALS	DATE
DRAWN <i>DAC</i>	1SEP10
CHECKED <i>DAC</i>	1SEP10
RELEASED <i>ABC</i>	1SEP10
REVISED <i>DAC</i>	1SEP10

TITLE NUTPLATE, FLOATING, SEALED			
SIZE A	CAGE CODE 66530	DWG. NO. CN610 (METRIC)	REV. 2
SCALE 2/1	1SEP10		SHEET 2 OF 2