

THE INFORMATION AND DESIGN HEREIN WAS DEVELOPED BY AND IS THE PROPERTY OF SOLID INDUSTRIES INCORPORATED. SOLID INDUSTRIES INCORPORATED RESERVES ALL PATENT, PROPRIETARY, DESIGN MANUFACTURING INFORMATION, USE AND SALES RIGHTS HEREIN, AND TO ANY ARTICLES DEVELOPED THEREIN EXCEPT TO THE EXTENT RIGHTS ARE EXPRESSLY GRANTED TO OTHERS. THE FOREGOING DOES NOT APPLY TO NON-PATENTABLE MATTER.

NOTES: UNLESS OTHERWISE SPECIFIED.

- REMOVE ALL BURRS AND BREAK SHARP EDGES.
- MAT'L REF.: INT. AND EXT. HANDLE; 6061-T6/T651 PER ASTM B221, OR EQUIV. ESCUTCHEON; LEXAN F6008, TEXTURE-HAIRCCELL P1, COLOR BLACK. ROD ASSY, MIXER ASSY, AND LATCHES; 303 CRES PER AMS-5640N OR EQUIV.
- FINISH REF.: ALUM. ALLOY; CLEAR ANODIZE PER MIL-A-8625 TYPE II, CLASS 1. ALUM. ALLOY (APPEARANCE SURFACES); SATIN BRUSH, CLEAR ANODIZE PER MIL-A-8625 TYPE II, CLASS 1. CRES PARTS; PASSIVATE PER QQ-P-35, TYPE II, OR EQUIV. EXTERIOR HANDLE; SATIN BRUSH, CLEAR ANODIZE PER MIL-A-8625, TYPE II, CLASS 1. (-421 THRU -424), EXTERIOR HANDLE; BRIGHT POLISH, AND BRIGHT CHROME PLATE PER QQ-C-320, TYPE I, CLASS 1. (-425 THRU -429).

ZONE	LTR	DESCRIPTION	DATE	APPROVED
	NC	PRODUCTION RELEASE	4-17-95	S. CSIK
	A	UPDATED PER FIRST ARTICLE	7-3-95	S. CSIK
	B	ADDED -403, -404 & REMOVED LOCK BUTTON REQD PER CUST. REQUEST. PICTORIALY UPDATED	8-24-95	S. CSIK
	C	UPDATED PER CUST. LBY407A8888. AND LBY407A83017	9-26-95	S. CSIK
	D	PER CUST. REQUEST FOR -401/-401 REMOVED 3164-203/-204, ADDED 3164-215/-216	11-20-95	S. CSIK
	E	CUST. REQUEST (PC1A8280) REPLACED -403/-404 WITH -425/-426. ADDED -407 THRU -410 ON SHIT. 2	7-1-97	T. CSIK
	F	REQD PER CUST. REQUEST, PERI DIBBLE REPLACED -411 THRU -419 WITH -411, -412 THRU -480	10-30-97	T. CSIK
	G	CUST. REQUEST IN PART. IS APPROXIMATELY APPROXIMATE. PROJECT IMPROVEMENT FOR VARIOUS COMPONENTS PER CUST. REQUEST	3-23-98	T. CSIK
	H	SEE ECN H	9-29-98	T. CSIK
	J	SEE ECN J	10-16-98	T. CSIK
	K	SEE ECN K		

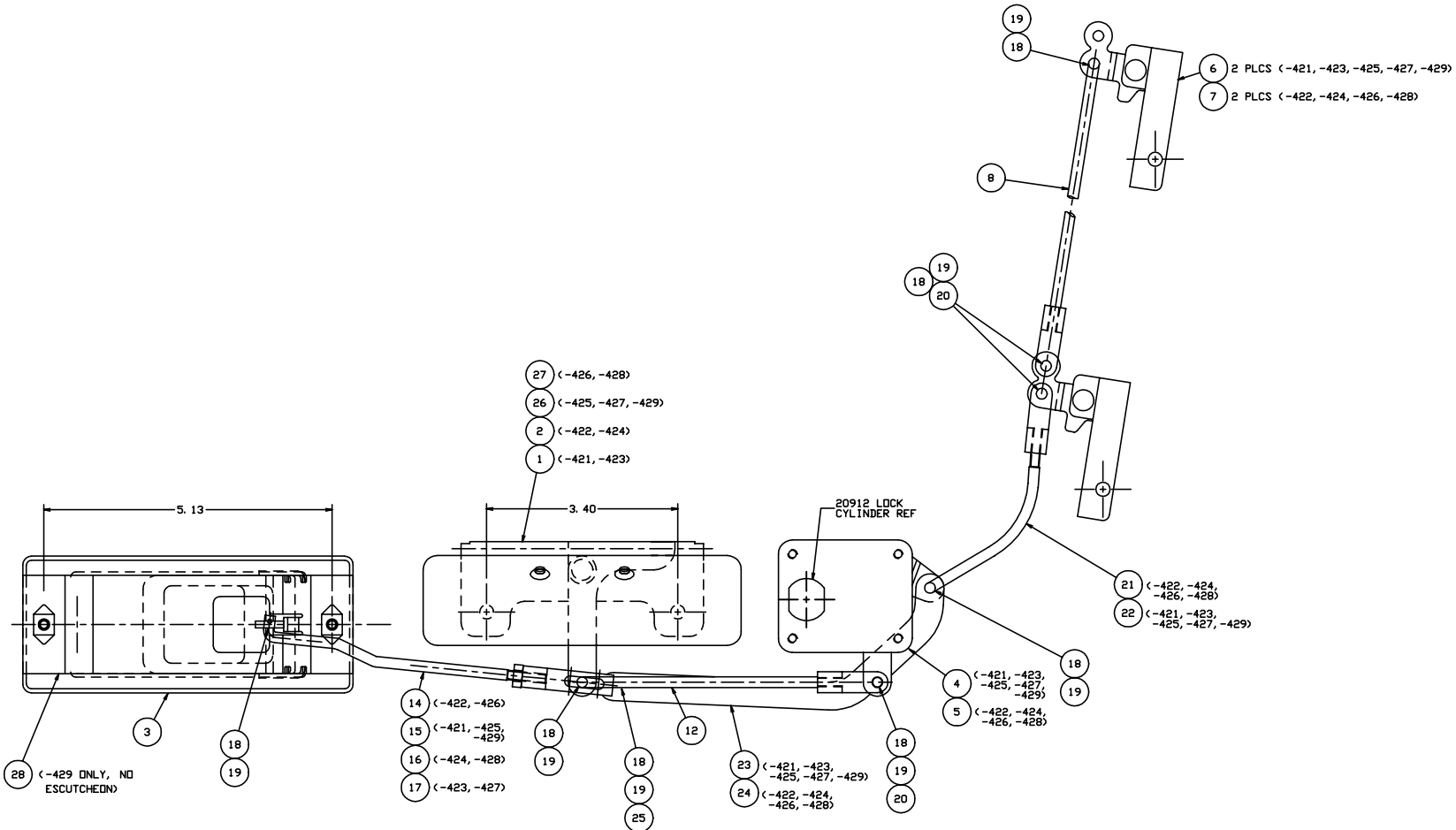
1										3161-203	INTERIOR HANDLE ASSY			28
	1									3160-208	EXTERIOR HANDLE ASSY (BRIGHT CHROME PLATE)			27
		1								3160-207	EXTERIOR HANDLE ASSY (BRIGHT CHROME PLATE)			26
	1	1	1	1	1	1	1	1	1	MS20392-2C7	PIN, STRAIGHT			25
			1							3226-6	LTNK			24
				1						3226-5	LTNK			23
					1					3164-216	RDD ASSY			22
						1				3164-215	RDD ASSY			21
	3	3	3	3	3	3	3	3	3	MS20392-2C13	PIN, STRAIGHT			20
	8	8	8	8	8	8	8	8	8	MS24665-151	PIN, COTTER			19
	8	8	8	8	8	8	8	8	8	AN960PD10L	WASHER			18
										3164-222	RDD ASSY			17
										3164-221	RDD ASSY			16
										3164-220	RDD ASSY			15
										3164-219	RDD ASSY			14
										3164-205	RDD ASSY			12
										3164-217	RDD ASSY			8
										3163-202	LATCH ASSY			7
										3163-201	LATCH ASSY			6
										3162-204	MIXER ASSY			5
										3162-203	MIXER ASSY			4
										3161-201	INTERIOR HANDLE ASSY			3
										3160-202	EXTERIOR HANDLE ASSY (SATIN BRUSH, CLR ANOD)			2
										3160-201	EXTERIOR HANDLE ASSY (SATIN BRUSH, CLR ANOD)			1

PART NO.	DESCRIPTION	MATERIAL	SIZE	SPECIFICATION	ITEM NO.									
-429	-428	-427	-426	-425	-424	-423	-422	-421						
L.H. CREW	R.H. PASS	L.H. PASS	R.H. CREW	L.H. CREW	R.H. PASS	L.H. PASS	R.H. CREW	L.H. CREW						

UNLESS OTHERWISE SPECIFIED	DRAWN BY T. CSIK	10-30-94	SOLID INDUSTRIES INCORPORATED MONROVIA, CALIFORNIA		
DIMENSIONS ARE IN INCHES	CHECKED S. CSIK	10-30-94			
TOLERANCES ON DECIMALS ANGLES DRILLED HOLES	ENGINEER T. CSIK	10-14-98			
±.0001 ±.0005 ±.0010	PROJECT P. M.	10-14-98			
DO NOT SCALE THIS DRAWING	APPROVAL J. V.	10-14-98			
MATERIAL - FINISH	USED ON	SIZE	CODE IDENT. NO.	DRAWING NO.	REV.
NEXT ASSY		D	51941	20898	K
FINAL ASSY		SCALE NONE	VS.	SHEET 1 OF 2	

THE INFORMATION AND DESIGN HEREIN WAS ORIGINATED BY AND IS THE PROPERTY OF SYLDEX INDUSTRIES INCORPORATED. SYLDEX INDUSTRIES INCORPORATED RESERVES ALL PATENT, PROPRIETARY, DESIGN MANUFACTURING, REPRODUCTION, USE AND SALES RIGHTS HEREIN AND TO ANY ARTICLES DEVELOPED THEREIN EXCEPT TO THE EXTENT RIGHTS ARE EXPRESSLY GRANTED TO OTHERS. THE FOREGOING DOES NOT APPLY TO NON-PATENTABLE MATTER.

REVISIONS				
ZONE	LTR	DESCRIPTION	DATE	APPROVED
		SEE SHT. 1 FOR NOTES		



(VIEW LOOKING INBOARD)

-421 (L. H. CREW) DOOR BOLTING SYSTEM (SHOWN)  
 -422 (R. H. CREW) DOOR BOLTING SYSTEM (OPP.)  
 -423 (L. H. PASS) DOOR BOLTING SYSTEM (SHOWN)  
 -424 (R. H. PASS) DOOR BOLTING SYSTEM (OPP.)

-425 (L. H. CREW) DOOR BOLTING SYSTEM (SHOWN)  
 -426 (R. H. CREW) DOOR BOLTING SYSTEM (OPP.)  
 -427 (L. H. PASS) DOOR BOLTING SYSTEM (SHOWN)  
 -428 (R. H. PASS) DOOR BOLTING SYSTEM (OPP.)  
 -429 (L. H. CREW) DOOR BOLTING SYSTEM (SHOWN)

SYLDEX INDUSTRIES INCORPORATED MONROVIA, CALIFORNIA			
DOOR BOLTING SYSTEM			
SIZE D	CODE IDENT. NO. 51941	DRAWING NO. 20898	REV. K
SCALE 1:2	VT.	SHEET 2 OF 2	