

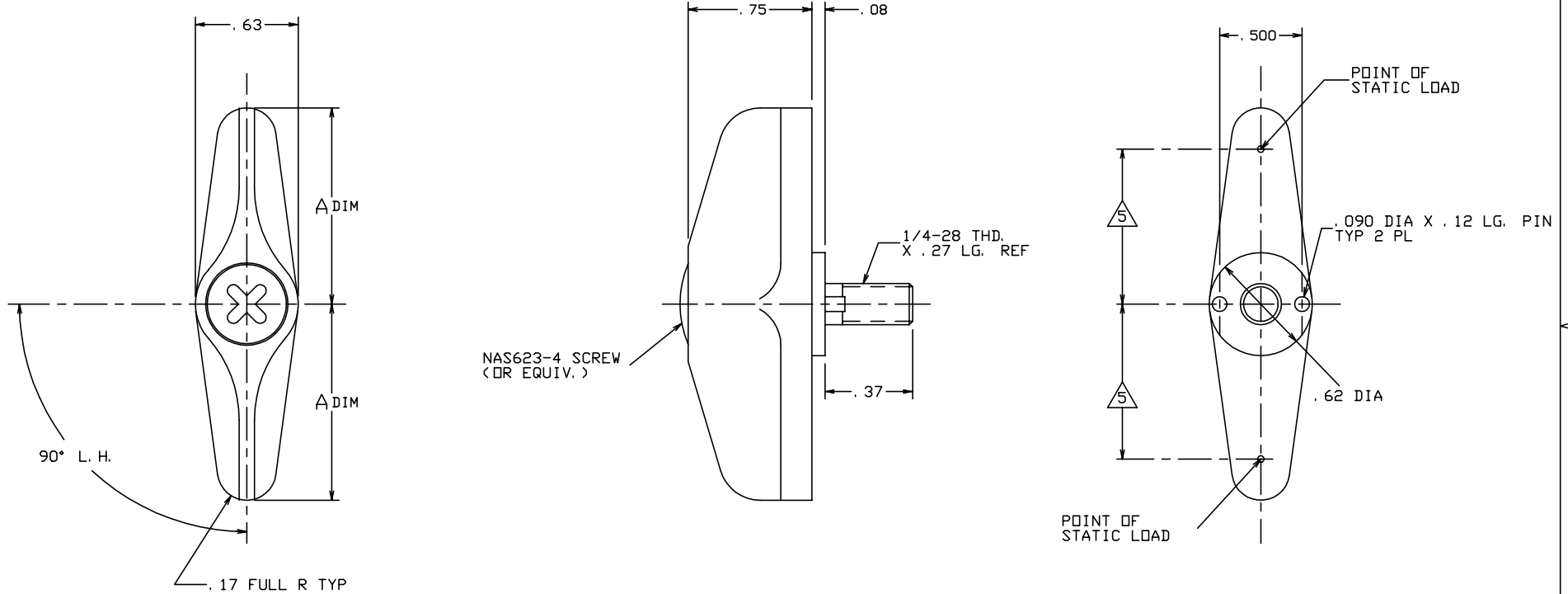
THE INFORMATION AND DESIGN HEREIN WAS ORIGINATED BY AND IS THE PROPERTY OF SKYLOCK INDUSTRIES INCORPORATED. SKYLOCK INDUSTRIES INCORPORATED RESERVES ALL PATENT, PROPRIETARY, DESIGN MANUFACTURING, REPRODUCTION, USE AND SALES RIGHTS THERE TO, AND TO ANY ARTICLE DISCLOSED THEREIN EXCEPT TO THE EXTENT RIGHTS ARE EXPRESSLY GRANTED TO OTHERS. THE FOREGOING DOES NOT APPLY TO VENDOR PROPRIETARY PARTS.


| REVISIONS | | | | |
|-----------|-----|--------------------|---------|----------|
| ZONE | LTR | DESCRIPTION | DATE | APPROVED |
| | NC | PRODUCTION RELEASE | 9-29-97 | T. CSIK |

NOTES: UNLESS OTHERWISE SPECIFIED.

1. REMOVE ALL BURRS AND BREAK SHARP EDGES.
2. MAT'L: RETAINER; ALUM. ALLOY, ALL OTHER PARTS; 300 SERIES CRES.
3. FINISH: ALUM.; ANODIZE, CRES PARTS; PASSIVATE.
4. DECORATIVE FINISH: RETAINER; BRIGHT BUFF AND CANDY APPLE RED ANODIZE.

△ STATIC LOAD: 2200 LBS. @ 1.00 BOTH SIDES, .04" DEFLECTION (FAILURE OF RETAINER @ 5860 LBS.).



| | | | | |
|-------------------------------|----------|------------------|-----------------------------|-------------------------------------------------------------------------------------------------------------------------------------------------------|
| 1. 19 | -401 | RETAINER ASSY | | |
| △ DIM | PART NO. | DESCRIPTION | MATERIAL SIZE SPECIFICATION | ITEM NO. |
| PARTS LIST | | | | |
| UNLESS OTHERWISE SPECIFIED | | DRAWN BY T. CSIK | 7-21-97 |  SKYLOCK INDUSTRIES INCORPORATED MONROVIA CALIFORNIA U. S. A. |
| DIMENSIONS ARE IN INCHES | | CHECKED | | |
| TOLERANCES ON | | ENGINEER | | |
| DECIMALS ANGLES DRILLED HOLES | | PROJECT | | |
| .X ± .1 ± 0° 30' AND 10387 | | APPROVAL | | 1/4 TURN RETAINER |
| .XX ± .03 | | APPROVAL | | |
| .XXX ± .010 | | APPROVAL | | |
| DO NOT SCALE THIS DRAWING | | APPROVAL | | |
| MATERIAL - FINISH | | USED ON | SIZE | CODE IDENT. NO. |
| NEXT ASSY | | | C | 51941 |
| FINAL ASSY | | | | 20942 |
| | | | DRAWING NO. | REV. |
| | | | | NC |
| | | | SCALE 2: 1 | VT. |
| | | | | SHEET 1 OF 1 |