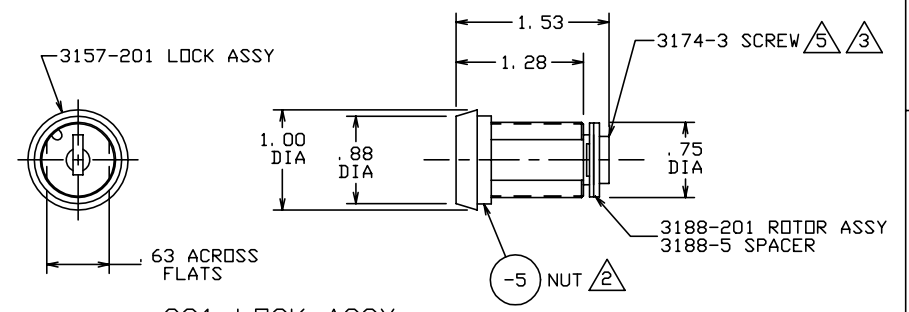


THE INFORMATION AND DESIGN HEREIN WAS ORIGINATED BY AND IS THE PROPERTY OF SKYLOCK INDUSTRIES INCORPORATED. SKYLOCK INDUSTRIES INCORPORATED RESERVES ALL PATENT, PROPRIETARY, DESIGN MANUFACTURING, REPRODUCTION, USE AND SALES RIGHTS THERE TO, AND TO ANY ARTICLE DISCLOSED THEREIN EXCEPT TO THE EXTENT RIGHTS ARE EXPRESSLY GRANTED TO OTHERS. THE FOREGOING DOES NOT APPLY TO VENDOR PROPRIETARY PARTS.

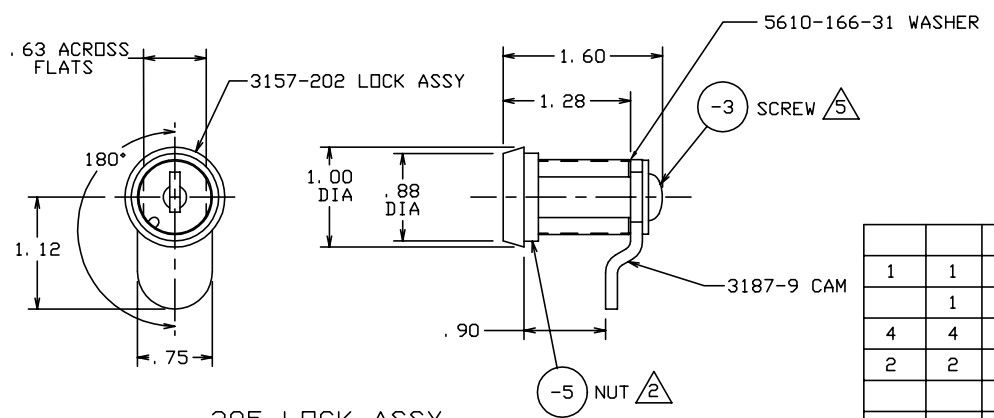
| REVISIONS | | | | |
|-----------|-----|-------------|---------|----------|
| ZONE | LTR | DESCRIPTION | DATE | APPROVED |
| | J | SEE ECN J | 3/10/99 | T. CSIK |
| | K | SEE ECN K | 3/31/99 | T. CSIK |

NOTES: UNLESS OTHERWISE SPECIFIED.

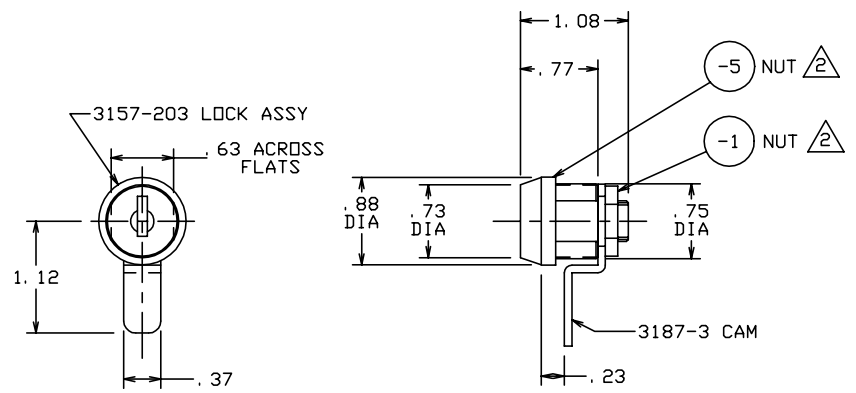
1. EACH -401 LOCKSET TO BE KEYED ALIKE.
2. APPLY #242 BLUE LOCTITE TO THREADS AT INSTALLATION.
3. ENSURE FREE ROTATION OF MATING CAM (REF. 3162 & 3187) AT-INSTALLATION. IF NEEDED, BACK OFF 3174 SCREW APPROX. 1/4 TURN.
4. PER FAR 45.15. PARTS WILL IDENTIFIED WITH:
 1. FAA-PMA.
 2. SKYLOCK IND. INC.
 3. PART NO.
 4. AIRCRAFT ELIGIBILITY.
5. APPLY NICKEL-PLATE HIGH TEMP. ANTI-SEIZE COMPOUND TO THREADS AT ASSY.



-201 LOCK ASSY
(USED ON 20898 CREW/PASS. DOORS)



-205 LOCK ASSY
(USED ON BAGGAGE DOOR)



-203 LOCK ASSY
(USED ON 20899 LITTER DOOR)

| QTY | QTY | QTY | QTY | QTY | PART NO. | DESCRIPTION | MATERIAL | SIZE | SPECIFICATION |
|------|------|------|------|------|-------------|-------------|-----------------------------|------|---|
| | | 1 | | | 5610-166-31 | WASHER | | | P/N OF SEASTROM MFG. |
| 1 | 1 | - | | | -205 | LOCK ASSY | | | |
| | 1 | | - | | -203 | LOCK ASSY | | | |
| 4 | 4 | | | - | -201 | LOCK ASSY | | | |
| 2 | 2 | | | | 1289 | KEY | | | <SUPPLIED WITH 1702 AND 3786 LOCK, CHICAGO LOCK CO.> |
| | | 1 | | | 3187-9 | CAM | | | |
| | | 1 | | | 3157-202 | LOCK ASSY | | | |
| | | | 1 | | 3187-201 | CAM ASSY | | | |
| | | | 1 | | 3157-201 | LOCK ASSY | | | |
| | | | | 1 | 3188-5 | SPACER | | | |
| | | | | 1 | 3188-203 | ROTOR ASSY | | | |
| | | | | 1 | 3174-3 | SCREW | | | |
| | | | | 1 | 3157-201 | LOCK ASSY | | | |
| | 1 | 1 | 1 | | -5 | NUT | | | <NUT SUPPLIED WITH 1702 LOCK> |
| | 1 | | | | -3 | SCREW | | | <SCREW SUPPLIED WITH 1702 LOCK> |
| | | | 1 | | -1 | NUT | | | <5/16-18 NUT SUPPLIED WITH 3786 LOCK, CHICAGO LOCK CO.> |
| -403 | -401 | -205 | -203 | -201 | PART NO. | DESCRIPTION | MATERIAL SIZE SPECIFICATION | | |

| PARTS LIST | | | |
|---|----------|-------------|-----------------|
| UNLESS OTHERWISE SPECIFIED | DRAWN BY | T. CSIK | 4-18-95 |
| DIMENSIONS ARE IN INCHES | CHECKED | T. CSIK | 12-15-95 |
| TOLERANCES ON | ENGINEER | T. CSIK | 12-15-98 |
| DECIMALS ANGLES DRILLED HOLES | MFG | J. VIVIRITO | 12-16-98 |
| .X ± .1 ± 0° 30' AND 10387 | QC | P. MATSUOKA | 12-15-98 |
| .XX ± .03 | | | |
| .XXX ± .010 | | | |
| DO NOT SCALE THIS DRAWING | | | |
| MATERIAL - FINISH | USED ON | SIZE | CODE IDENT. NO. |
| NEXT ASSY | | C | 51941 |
| MANUFACTURE IN ACCORDANCE WITH SKYLOCK IND. INC., QUALITY CONTROL MANUAL QC.001 | | DRAWING NO. | REV. |
| | | 20912 | K |
| SCALE 2:1 | | VT. | SHEET 1 OF 1 |



LOCKSET