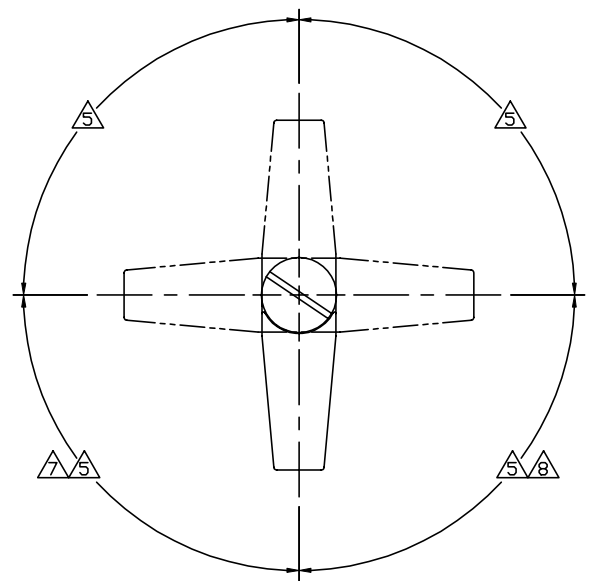
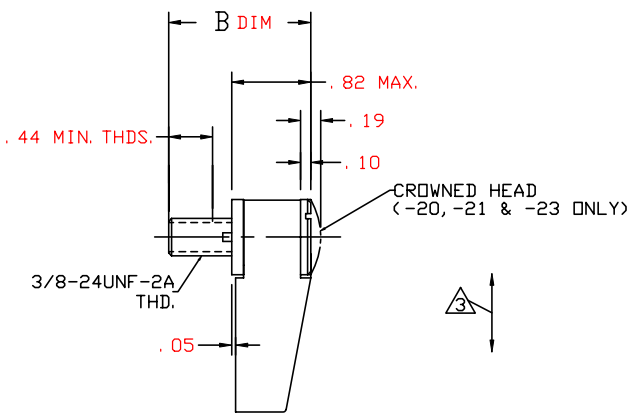
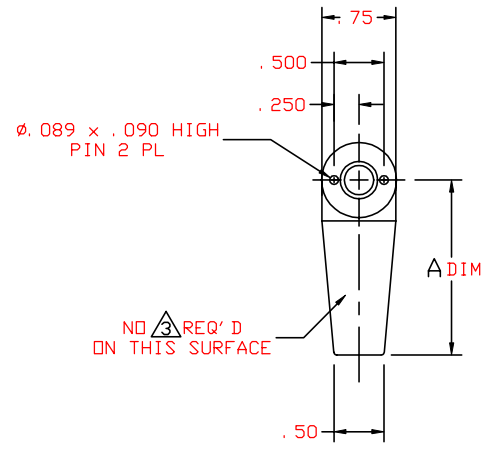


THE INFORMATION AND DESIGN HEREIN WAS ORIGINATED BY AND IS THE PROPERTY OF SKYLOCK INDUSTRIES INCORPORATED. SKYLOCK INDUSTRIES INCORPORATED RESERVES ALL PATENT, PROPRIETARY, DESIGN MANUFACTURING, REPRODUCTION, USE AND SALES RIGHTS THERE TO, AND TO ANY ARTICLE DISCLOSED THEREIN EXCEPT TO THE EXTENT RIGHTS ARE EXPRESSLY GRANTED TO OTHERS. THE FOREGOING DOES NOT APPLY TO VENDOR PROPRIETARY PARTS.

REVISIONS				
ZONE	LTR	DESCRIPTION	DATE	APPROVED
	H	SEE ECN H		



TYPICAL RETAINER

- △ 90° R. H. ROTATION, DETENTED EACH 90°
 - △ 90° L. H. ROTATION, DETENTED EACH 90°
 - 6. STUD IS HEAT TREATED TO 210 KSI PER MIL-H-6875.
 - △ 360° ROTATION, DETENTED EACH 90°
 - △ THE FOLLOWING STATIC LOAD IS FOR REFERENCE USE ONLY. IT IS PROVIDED FOR CUSTOMER ENGINEERING TO DETERMINE THE GENERAL SUITABILITY OF THE PRODUCT FOR ITS INTENDED USE. ALTHOUGH SKYLOCK IS PROVIDING THE REFERENCE STATIC LOAD, THE CUSTOMER IS ULTIMATELY RESPONSIBLE FOR CERTIFICATION OF THE PRODUCT FOR ITS SPECIFIC APPLICATION. REFERENCE STATIC LOAD: 2500 LBS. MAX. (-1, -23)
1325 LBS. MAX. (-5, -14, -15)
1650 LBS. MAX. (-12, -13, -18, -19, -20, -21)
1105 LBS. MAX. (-25, -26)
 - △ SATIN BRUSH FACE OF STUD & TURN AS SHOWN.
 - 2. FINISH REF.: CRES PARTS; SATIN BRUSH DIRECTON SHOWN, PASSIVATE PER AMS-QQ-P-35, OR EQUIV.
 - 1. MAT'L REF.: STUD; 17-4 PH CRES. COND. A, PER AMS-5643 OR EQUIV. TURN; 303 CRES, COND. A, PER AMS-5640N OR EQUIV.
- REMOVE ALL BURRS AND SHARP CORNERS.
- NOTES: UNLESS OTHERWISE SPECIFIED

1.48	3.00		-26	RETAINER	△7	120312-226
1.48	3.00		-25	RETAINER	△8	120312-225
1.68	1.75		-23	RETAINER	△5	120312-223
2.62	1.75		-21	RETAINER	△7	120312-221
2.62	1.75		-20	RETAINER	△8	120312-220
1.48	1.32		-19	RETAINER	△7	120312-219
1.48	1.32		-18	RETAINER	△8	120312-218
1.48	3.56		-17	RETAINER	△7	120312-217
1.48	3.56		-16	RETAINER	△8	120312-216
1.48	2.187		-15	RETAINER	△7	120312-215
1.48	2.187		-14	RETAINER	△8	120312-214
1.48	1.75		-13	RETAINER	△7	120312-213
1.48	1.75		-12	RETAINER	△8	120312-212
1.48	2.187		-5	RETAINER	△5	120312-205
1.48	3.56		-3	RETAINER	△5	120312-203
1.48	1.75		-1	RETAINER	△5	120312-201

PARTS LIST		MATERIAL SIZE APPLICATION		MAKE FROM	
DIM	B DIM	A			
UNLESS OTHERWISE SPECIFIED		DRAWN BY	JEE	1/10/79	SKYLOCK INDUSTRIES INCORPORATED MONROVIA CALIFORNIA U. S. A.
DIMENSIONS ARE IN INCHES		CHECKED	T. CSIK	9/1/99	
TOLERANCES ON		ENGINEER	T. CSIK	9/1/99	
DECIMALS ANGLES DRILLED HOLES		MFG	P. MATSUOKA	9/2/99	
.X ± .1 ± 0° 30' AND 10387		QC	J. VIVIRITO	9/1/99	
.XXX ± .010					
DO NOT SCALE THIS DRAWING					
MATERIAL - FINISH		USED ON		SIZE	CODE IDENT. NO.
NEXT ASSY				C	51941
MANUFACTURE IN ACCORDANCE WITH SKYLOCK IND. INC., QUALITY CONTROL MANUAL QC.001				SCALE	2: 1
				WT.	
				SHEET	1 OF 1

20312 RETAINER

20312 H