

THE INFORMATION AND DESIGN HEREIN WAS ORIGINATED BY AND IS THE PROPERTY OF SKYLOCK INDUSTRIES INCORPORATED. SKYLOCK INDUSTRIES INCORPORATED RESERVES ALL PATENT, PROPRIETARY, DESIGN MANUFACTURING, REPRODUCTION, USE AND SALES RIGHTS THERE TO, AND TO ANY ARTICLE DISCLOSED THEREIN EXCEPT TO THE EXTENT RIGHTS ARE EXPRESSLY GRANTED TO OTHERS. THE FOREGOING DOES NOT APPLY TO VENDOR PROPRIETARY PARTS.


D	SHT. 3, ADDED 1.00 THD. MIN. (-133, -135 ONLY)	8-24-92	T. C.	REVISIONS				
E	ADDED -137, -139	11-12-93	T. C.	ZONE	LTR	DESCRIPTION	DATE	APPROVED
F	REVISED GENERAL NOTES 2 THRU 5 FOR CLARIFICATION	12-6-94	T. C.		NC	PRODUCTION RELEASE	1-27-92	T. C.
G	ADDED -141, -143	5-11-98	T. C.		A	ADDED -125 THRU -131	2-5-92	T. C.
					B	ADDED -133 & -135	5-13-92	T. C.
					C	REVISED 'D' DIM. IS .100 WAS .125	7-14-92	T. C.

- NOTES: UNLESS OTHERWISE SPECIFIED.
- REMOVE ALL BURRS AND BREAK SHARP EDGES.
 - MAT'L: RETAINER; 7075-T651 ALUM. ALLOY, STUD; 17-4PH CRES., H. T. TO H900 PER MIL-H-6875, BASE ASSY; 300 SERIES CRES.
 - REMOVED.

- FINISH: RETAINER; BRIGHT BUFF, AND CANDY APPLE RED ANODIZE PER MIL-A-8625, BASE ASSY; GLASS BEAD PEEN, DRY FILM LUBRICATE, AND SATIN BRUSH APPEARANCE SURFACE, STUD; GLASS BEAD PEEN, DRY FILM LUBRICATE BEARING AND THREADED SURFACES ONLY.
- FINISH: RETAINER; SATIN BRUSH, AND CLEAR ANODIZE PER MIL-A-8625, BASE ASSY; GLASS BEAD PEEN, DRY FILM LUBRICATE, AND SATIN BRUSH APPEARANCE SURFACE, STUD; GLASS BEAD PEEN, DRY FILM LUBRICATE BEARING AND THREADED SURFACES ONLY.
- ROTATION: 360 DEGREES; DETENTED EVERY 90 DEGREES.
- ROTATION: 180 DEGREES; DETENTED EVERY 90 DEGREES.
- ROTATION: 90 DEGREES RIGHT HAND.
- ROTATION; 90 DEGREES LEFT HAND.
- STATIC LOAD: 1,935 LBS MAX.
- STATIC LOAD: 1,200 LBS MAX.
- STATIC LOAD: 900 LBS MAX.
- STATIC LOAD: 4,000 LBS MAX.
- STATIC LOAD ESTABLISHED BY QUALIFICATION TEST.
- SHAFT NEEDS NO TORQUE ADJUSTMENT; TIGHTEN SHAFT AS MUCH AS POSSIBLE WHEN INSTALLING RETAINER.
- ALL RETAINERS HAVE THREADS COATED WITH VC-3 (VISCIDIOUS COATING VIBRATITE).
- ROTATION: 180 DEGREES, DETENTED EVERY 45 DEGREES.
- ROTATION: 90 DEGREES RIGHT HAND, DETENTED EVERY 45 DEGREES.
- ROTATION: 90 DEGREES LEFT HAND, DETENTED EVERY 45 DEGREES.
- DECORATIVE FINISH: GLASS BEAD PEEN HEAD OF STUD ONLY.

E DIM	D DIM	C DIM	B DIM	A DIM	Q DIM	PART NO.	DESCRIPTION	MATERIAL	SIZE	SPECIFICATION	ITEM NO.	
.250	.100	2.74	1.62	1.24	2.12	-61	RETAINER		5	9	13	
.250	.100	2.74	1.62	1.24	2.12	-59	RETAINER		5	8	13	
.250	.100	2.74	1.62	1.24	2.12	-57	RETAINER		5	7	13	
.250	.100	3.50	2.38	1.24	2.88	-55	RETAINER		4	7	13	
.250	.100	5.12	1.20	.74 MAX	4.50	-53	RETAINER		4	7	13	
.250	.100	2.365	1.20	.74 MAX	1.74	-51	RETAINER		4	7	13	
.250	.100	5.12	3.25	2.00	4.50	-49	RETAINER		4	9	10	
.250	.100	5.12	3.25	2.00	4.50	-47	RETAINER		4	8	10	
.250	.100	2.74	1.62	2.00	2.12	-45	RETAINER		4	8	13	
.250	.100	2.74	1.62	2.00	2.12	-43	RETAINER		4	9	13	
.250	.100	9.42	4.25	1.24	8.80	-41	RETAINER		4	7	12	
.250	.100	2.74	1.62	1.24	2.12	-39	RETAINER		4	7	13	
.250	.100	8.12	7.00	1.24	7.50	-37	RETAINER		4	7	12	
.250	.100	6.62	4.25	1.24	6.00	-35	RETAINER		5	9	11	
.250	.100	6.62	4.25	1.24	6.00	-33	RETAINER		5	8	11	
.250	.100	6.62	4.25	1.24	6.00	-31	RETAINER		5	7	11	
.250	.100	6.62	4.25	1.24	6.00	-29	RETAINER		5	6	11	
.250	.100	5.12	3.25	.74 MAX	4.50	-27	RETAINER		5	6	10	
.250	.100	5.12	3.25	1.24	4.50	-25	RETAINER		5	9	10	
.250	.100	5.12	3.25	1.24	4.50	-23	RETAINER		5	8	10	
.250	.100	5.12	3.25	1.24	4.50	-21	RETAINER		5	7	10	
.250	.100	5.12	3.25	1.24	4.50	-19	RETAINER		5	6	10	
.250	.100	6.62	4.25	1.24	6.00	-17	RETAINER		5	9	11	
.250	.100	7.25	4.25	1.24	6.62	-15	RETAINER		4	8	11	
.250	.100	6.62	4.25	1.24	6.00	-13	RETAINER		4	7	11	
.250	.100	6.62	4.25	1.24	6.00	-11	RETAINER		4	6	11	
.250	.100	5.12	3.25	.74 MAX	4.50	-9	RETAINER		4	6	10	
.250	.100	5.12	3.25	1.24	4.50	-7	RETAINER		4	9	10	
.250	.100	5.12	3.25	1.24	4.50	-5	RETAINER		4	8	10	
.250	.100	5.12	3.25	1.24	4.50	-3	RETAINER		4	7	10	
.250	.100	5.12	3.25	1.24	4.50	-1	RETAINER		4	6	10	

PARTS LIST

UNLESS OTHERWISE SPECIFIED DIMENSIONS ARE IN INCHES	DRAWN BY T. CSIK	1-27-92	 SKYLOCK INDUSTRIES INCORPORATED MONROVIA CALIFORNIA U. S. A.
TOLERANCES ON DECIMALS ANGLES DRILLED HOLES	CHECKED		
.X ± .1 ± 0° 30' AND 10387	ENGINEER		
.XXX ± .010	PROJECT		
DO NOT SCALE THIS DRAWING	APPROVAL T. CSIK	1-27-92	1/4 TURN RETAINER
MATERIAL - FINISH	USED ON	SIZE	CODE IDENT. NO.
NEXT ASSY		C	51941
FINAL ASSY		DRAWING NO.	20770
		REV.	G
		SCALE NONE	WT.
		SHEET 1	OF 3

4

3

2

1

REVISIONS				DATE	APPROVED
ZONE	LTR	DESCRIPTION			
SEE SHT. 1 FOR NOTES					

.250	.100	5.12	3.25	3.11	4.50	-131	RETAINER	5	8	10
.250	.100	5.12	3.25	3.11	4.50	-129	RETAINER	5	9	10
.250	.100	5.12	3.25	2.61	4.50	-127	RETAINER	5	8	10
.250	.100	5.12	3.25	2.61	4.50	-125	RETAINER	5	9	10
.250	.100	8.75	4.25	2.00	8.12	-123	RETAINER	4	19	11
.250	.100	8.75	4.25	2.00	8.12	-121	RETAINER	4	18	11
.250	.100	5.12	3.25	1.24	4.50	-119	RETAINER	4	9	10
.250	.100	5.12	3.25	1.24	4.50	-117	RETAINER	4	8	10
.250	.100	8.12	4.25	2.00	7.50	-115	RETAINER	4	19	11
.250	.100	7.25	4.25	2.00	6.62	-113	RETAINER	4	18	11
.250	.100	2.74	1.62	2.00	2.12	-111	RETAINER	4	18	13
.440	.050	5.12	3.25	1.18	4.50	-109	RETAINER	4	19	10
.440	.050	5.12	3.25	1.18	4.50	-107	RETAINER	4	18	10
.375	.050	5.12	3.25	1.18	4.50	-105	RETAINER	4	19	10
.375	.050	5.12	3.25	1.18	4.50	-103	RETAINER	4	18	10
.250	.100	8.12	4.25	2.00	7.50	-101	RETAINER	4	18	11
.250	.100	7.25	4.25	2.00	6.62	-99	RETAINER	4	19	11
.250	.100	8.12	4.25	1.24	7.50	-97	RETAINER	4	9	11
.250	.100	4.00	2.75	1.24	3.38	-95	RETAINER	4	19	10
.250	.100	4.00	2.75	1.24	3.38	-93	RETAINER	4	18	10
.250	.050	5.12	3.25	1.24	4.50	-91	RETAINER	4	9	10
.250	.050	5.12	3.25	1.24	4.50	-89	RETAINER	4	8	10
.312	.050	5.12	3.25	1.18	4.50	-87	RETAINER	4	19	10
.312	.050	5.12	3.25	1.18	4.50	-85	RETAINER	4	18	10
.250	.100	5.12	3.25	.74 MAX.	4.50	-83	RETAINER	4	8	10
.250	.100	5.12	3.25	.74 MAX.	4.50	-81	RETAINER	4	9	10
.250	.100	5.12	3.25	2.00	4.50	-79	RETAINER	5	8	10
.250	.100	5.12	3.25	2.00	4.50	-77	RETAINER	5	9	10
.250	.100	3.12	2.00	1.24	2.50	-75	RETAINER	4	8	10
.250	.100	2.74	1.20	.76 MAX.	2.12	-73	RETAINER	4	7	13
.250	.100	2.74	1.62	1.24	2.12	-71	RETAINER	4	8	13
.250	.100	2.74	1.62	1.24	2.12	-69	RETAINER	4	9	13
.250	.100	5.12	3.25	1.24	4.50	-67	RETAINER	4	17	10
.250	.100	3.12	2.00	1.24	2.50	-65	RETAINER	4	9	10
.250	.100	8.62	3.25	.74 MAX.	8.00	-63	RETAINER	4	7	10

.250	.100	5.12	1.62	1.24	4.50	-143	RETAINER	4	13	18	20
.250	.100	5.12	1.62	1.24	4.50	-141	RETAINER	4	13	19	20
.250	.100	5.12	1.62	1.24	4.50	-139	RETAINER	5	13	18	20
.250	.100	5.12	1.62	1.24	4.50	-137	RETAINER	5	13	19	20
.250	.100	5.12	3.25	1.18	4.50	-135	RETAINER	4	19	10	
.250	.100	5.12	3.25	1.18	4.50	-133	RETAINER	4	18	10	

E DIM	D DIM	C DIM	B DIM	A DIM	C DIM	PART NO.	DESCRIPTION	MATERIAL	SIZE	SPECIFICATION	E DIM	D DIM	C DIM	B DIM	A DIM	C DIM	PART NO.	DESCRIPTION	MATERIAL	SIZE	SPECIFICATION
-------	-------	-------	-------	-------	-------	----------	-------------	----------	------	---------------	-------	-------	-------	-------	-------	-------	----------	-------------	----------	------	---------------


 SKYLOCK INDUSTRIES INCORPORATED
 MONROVIA CALIFORNIA U. S. A.

1/4 TURN RETAINER

SIZE	CODE IDENT. NO.	DRAWING NO.	REV.
C	51941	20770	G
SCALE	NONE	VT.	SHEET 2 OF 3

4

3

2

1

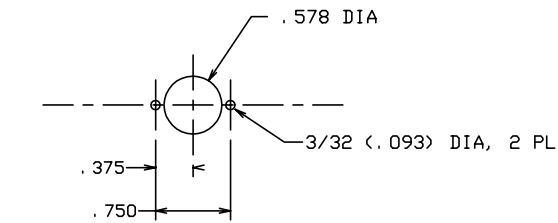
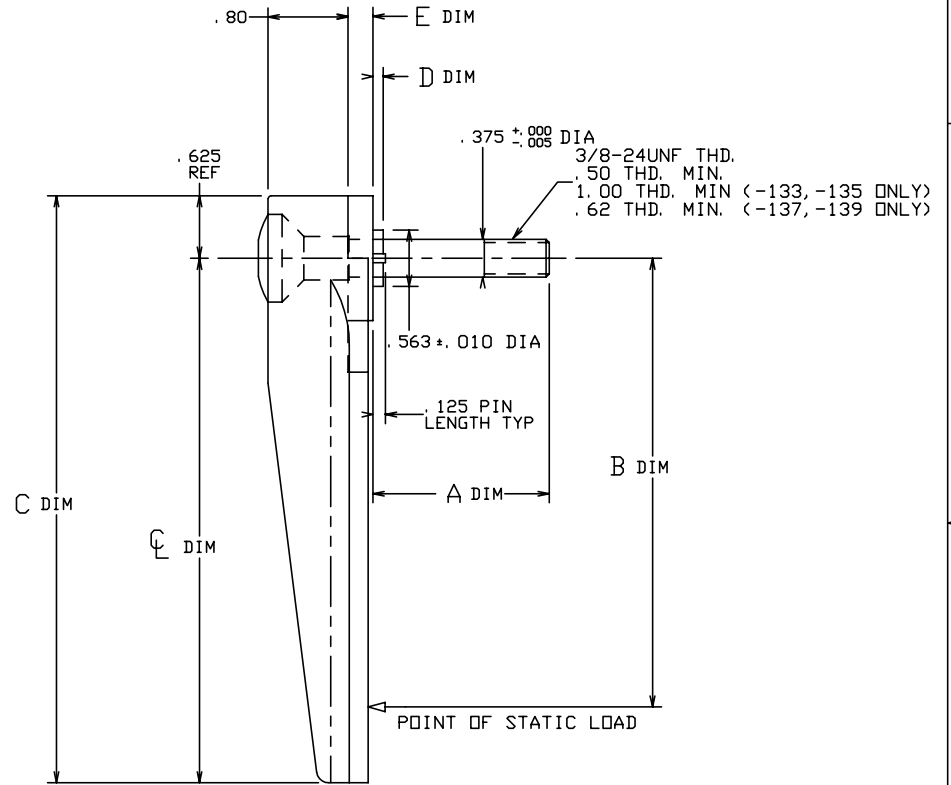
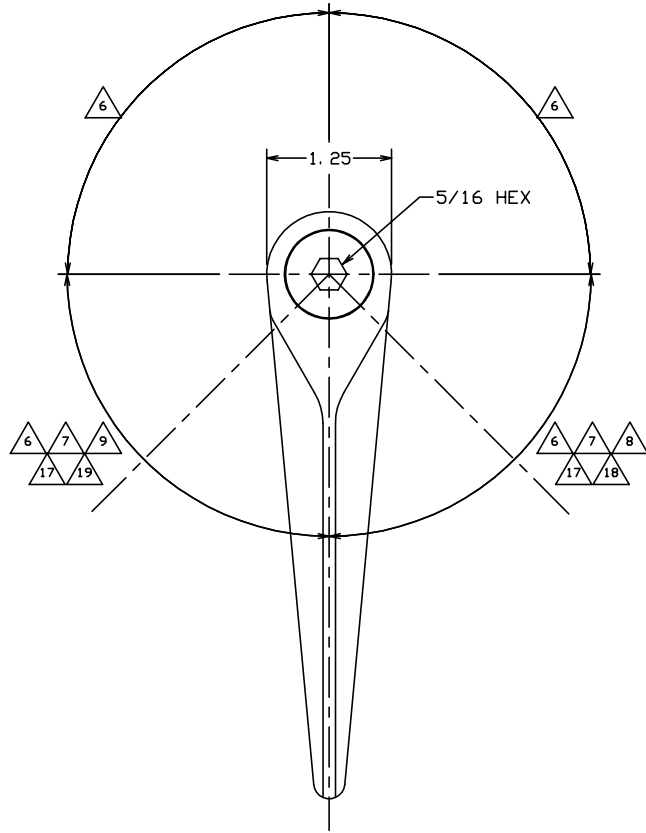
4

3

2

1

REVISIONS				
ZONE	LTR	DESCRIPTION	DATE	APPROVED
		SEE SHT. 1		



SUGGESTED PANEL CUTOUT


 SKYLOCK INDUSTRIES INCORPORATED
 MONROVIA CALIFORNIA U. S. A.

1/4 TURN RETAINER

SIZE	CODE IDENT. NO.	DRAWING NO.	REV.
C	51941	20770	G
SCALE	NONE	VT.	SHEET 3 OF 3

4

3

2

1