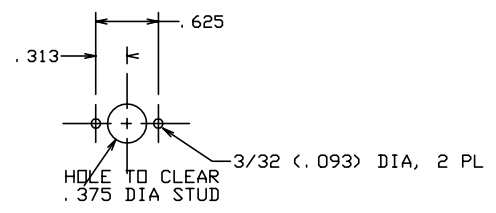
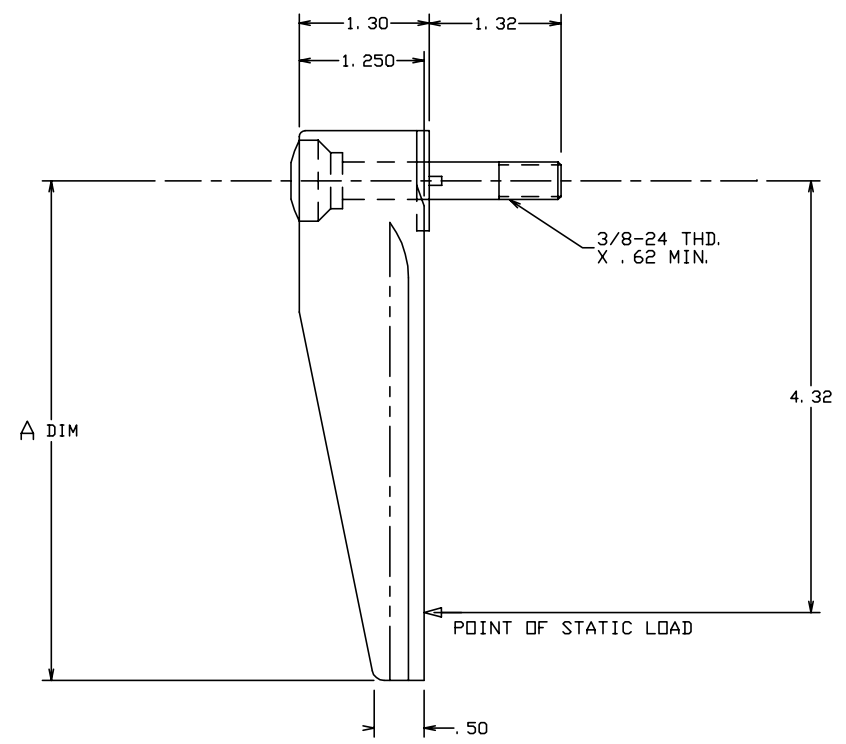
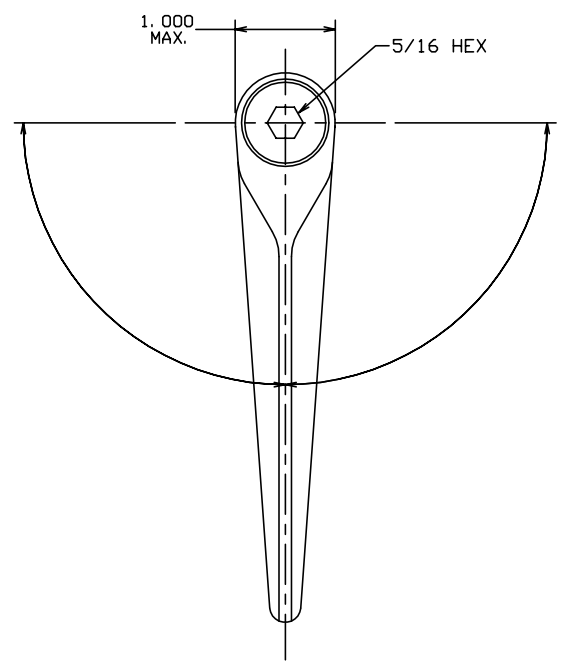


THE INFORMATION AND DESIGN HEREIN WAS ORIGINATED BY AND IS THE PROPERTY OF SKYLOCK INDUSTRIES INCORPORATED. SKYLOCK INDUSTRIES INCORPORATED RESERVES ALL PATENT, PROPRIETARY, DESIGN MANUFACTURING, REPRODUCTION, USE AND SALES RIGHTS THERE TO, AND TO ANY ARTICLE DISCLOSED THEREIN EXCEPT TO THE EXTENT RIGHTS ARE EXPRESSLY GRANTED TO OTHERS. THE FOREGOING DOES NOT APPLY TO VENDOR PROPRIETARY PARTS.


REVISIONS				
ZONE	LTR	DESCRIPTION	DATE	APPROVED
	NC	PRODUCTION RELEASE	1-27-92	T. CSIK

- NOTES: UNLESS OTHERWISE SPECIFIED.
1. REMOVE ALL BURRS AND BREAK SHARP EDGES.
 2. MAT'L: RETAINER; ALUM. ALLOY, ALL OTHER PARTS; 300 SERIES CRES.
 3. FINISH: ALUM.; ANODIZE, CRES PARTS; PASSIVATE.
 4. DECORATIVE FINISH: RETAINER; BRIGHT BUFF AND CANDY APPLE RED ANODIZE.
 5. STATIC LOAD: 1700 LBS. MAX.
 6. SHAFT NEEDS NO TORQUE ADJUSTMENT. TIGHTEN SHAFT AS MUCH AS POSSIBLE WHEN INSTALLING RETAINER.



SUGGESTED PANEL CUTOUT

5.00	-405	RETAINER ASSY	<180°, DETENTED EVERY 45°		
5.00	-403	RETAINER ASSY	<90° RIGHT HAND, DETENTED EVERY 45°		
5.00	-401	RETAINER ASSY	<90° LEFT HAND, DETENTED EVERY 45°		
A DIM	PART NO.	DESCRIPTION	MATERIAL	SIZE SPECIFICATION	ITEM NO.

PARTS LIST		UNLESS OTHERWISE SPECIFIED		DRAWN BY T. CSIK 1-27-92		 SKYLOCK INDUSTRIES INCORPORATED MONROVIA CALIFORNIA U. S. A.	
DIMENSIONS ARE IN INCHES		TOLERANCES ON		CHECKED			1/4 TURN RETAINER
DECIMALS ANGLES DRILLED HOLES		DO NOT SCALE THIS DRAWING		ENGINEER			
.X ± .1 ± 0° 30' AND 10387		MATERIAL - FINISH		APPROVAL T. CSIK 1-27-92			
.XXX* .010		USED ON		APPROVAL			
NEXT ASSY		MATERIAL - FINISH		SIZE	CODE IDENT. NO.	DRAWING NO.	REV.
FINAL ASSY		USED ON		C	51941	20753	NC
				SCALE	1: 1	WT.	SHEET 1 OF 1