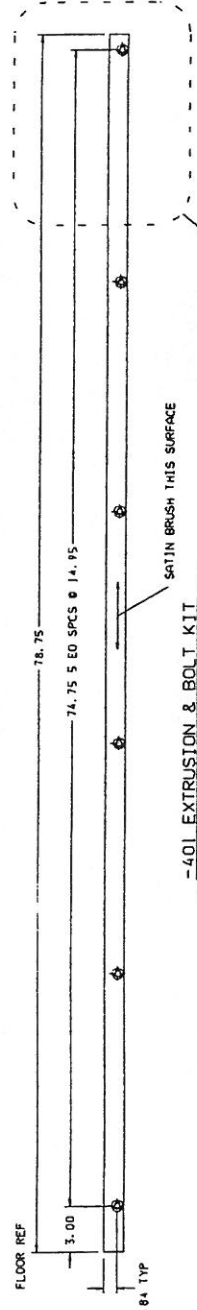


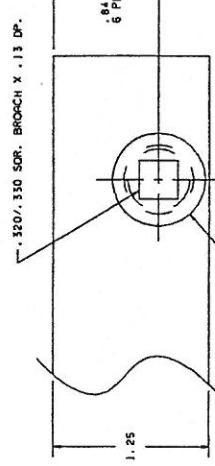
8 7 6 5 4 3 2 1

NOTES: UNLESS OTHERWISE SPECIFIED:
 1. REMOVE ALL BURRS AND BREAK SHARP EDGES.
 2. MAT'L: EXTRUSION AND BOLTS - 2024-T3 ALUMINUM ALLOY.
 3. FINISH: SATIN BRUSH APPEARANCE SURFACES OF EXTRUSION AND BOLTS.
 4. USE LOW CARBON STEEL TO INSTALL KINGZOL KEENSERTS.
 5. FINISH: SATIN BRUSH APPEARANCE SURFACES OF EXTRUSION AND BOLTS.
 6. USE LOW CARBON STEEL TO INSTALL KINGZOL KEENSERTS.

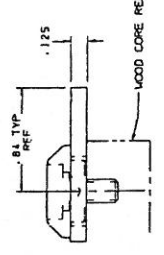
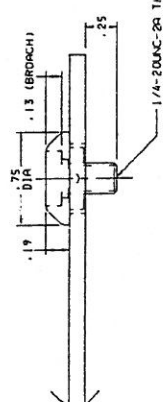
REV	DATE	BY	CHKD	DESCRIPTION
A	9-26-98	J. C.		PRODUCTION RELEASE
B	12-4-98	J. C.		REVISED AND REDRAWN PER COST. REQUEST



-4.01 EXTRUSION & BOLT KIT
 (KEENSERTS NOT SHOWN, BUT ARE INCLUDED IN KIT)
 (SCALE: 1/4)



(SCALE: 2/1)



QTY	DESCRIPTION	UNIT	PRICE	TOTAL
6	KINGZOL KEENSERT			
6	325B-1 BOLT			
1	3257-1 EXTRUSION			
-401	PART NO.			

QTY	DESCRIPTION	UNIT	PRICE	TOTAL
1	EXTRUSION & BOLT KIT		51.94	51.94
				20923

EXTRUSION AND BOLT KIT

5194 20923