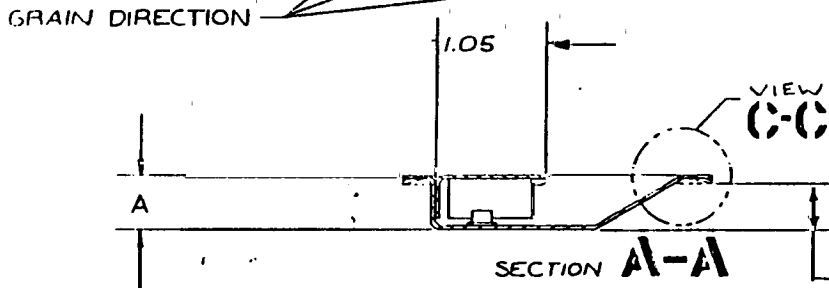
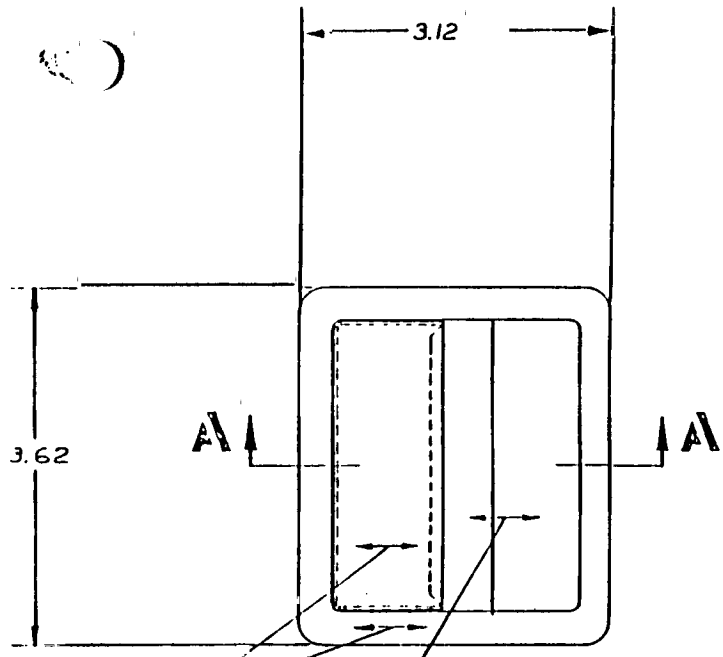
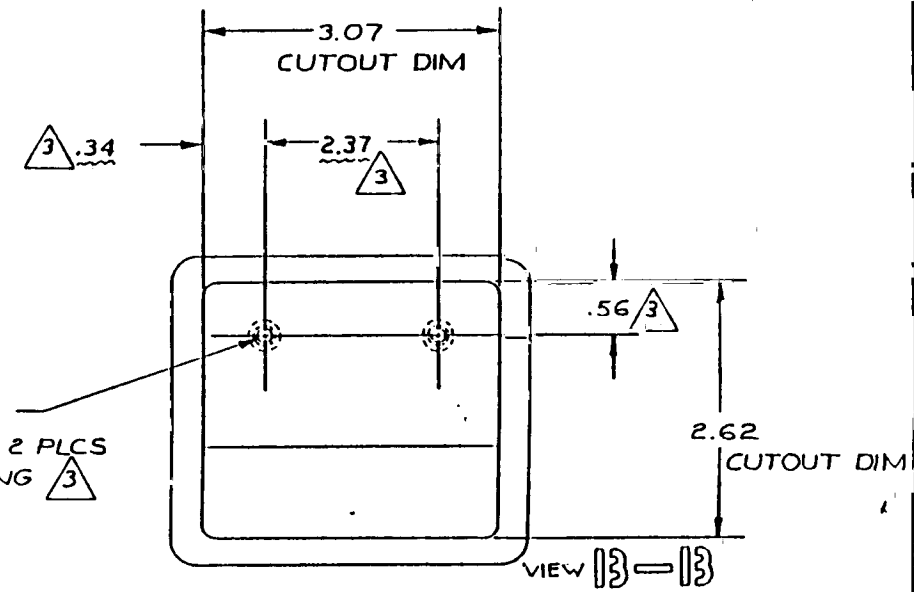


SYM	REVISIONS		DATE	BY
	EFFECTIVE ON	DESCRIPTION		
A	ADD -3	DISP EXIST PARTS	11-29-78	JEE
B	ADD -5		12-6-78	JEE
C	ZONE B-4 1.05 WAS 1.12		6-12-79	JEE
D	ADD -7		12-1-80	JEE
E	ADD VIEW C-C		3-3-89	TS
F	ADD -9		9-2-89	X



NO #32 UNC  
THD INSERT 2 PLCS  
SELF LOCKING



DIM A	REQD	PART NUMBER	DESCRIPTION	MATERIAL OR NOTE
.45		-9	HANDLE ASSY	1 2
.56		-7	HANDLE ASSY	1 2 SAME AS -1, OVERBENT FLANGE
.56		-5	HANDLE ASSY	1 2 SAME AS -1, NO INSERTS
.75		-3	HANDLE ASSY	1 2
.56		-1	HANDLE ASSY	1 2

LIST OF MATERIAL

UNLESS OTHERWISE NOTED DIMENSIONS ARE IN INCHES. TOLERANCES ON DECIMALS XX ± .03 XXX ± .010 ANGLES ± DRILLED HOLES PER ANSI Q13.1		CONTRACT NO.		SKYLOCK INDUSTRIES, INC. BALDWIN PARK, CALIFORNIA	
SURFACE ROUGHNESS		DRAFTSMAN JEE 7/22/79		HANDLE ASSEMBLY	
HEAT TREAT		CHECKER			
FINISH		ENGINEER JEE 7/22/79		SIZE CODE IDENT NO. C 51941 20227	
INSPECT		PROD. APPD			
REF. NO.		APPROVAL		SCALE 1/1 WT CALC WT ACT SHEET 1 OF 1	
NEXT ASSY USED ON		APPLICATION			

1 THESE DIMS APPLY TO -1 & -3 ONLY

2 FINISH: PASSIVATE SATIN BRUSH

1 MAT'L: 300 SERIES CRES

NOTES: UNLESS OTHERWISE SPECIFIED

20227