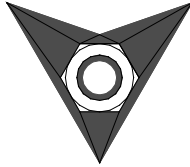
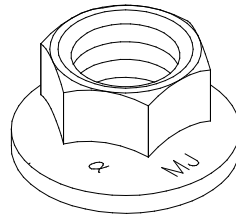


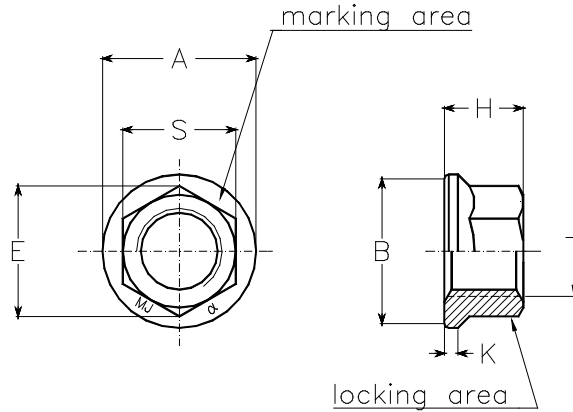
PAOLO ASTORI



PAOLO ASTORI s.r.l.
via Mirabella 9-MAGGIATE SUP.
I 28013-GATTICO (NO)



JDS10
JDS11



dimensioni in mm. dimensions in mm.

codice dimensioni dimensions code	filettatura T thread T	A max.	B min.	E min.	H max.	K min.	S h12	mass kg x 1000
03	MJ3 x 0,5	4H-6H	6,0	5,3	4,2	3,0	4	0,28
04	MJ4 x 0,7	4H-6H	7,4	6,7	5,3	4,0	5	0,50
05	MJ5 X 0,8	4H-6H	9,1	8,3	6,5	5,0	6	0,80
06	MJ6 x 1	4H-5H	10,6	9,8	7,6	5,4	7	1,15
08	MJ8 x 1	4H-5H	13,6	12,8	10,9	7,2	10	3,15
10	MJ10 x 1,25	4H-5H	16,8	15,8	13,2	9,0	12	4,75
12	MJ12 x 1,25	4H-5H	19,9	18,8	15,5	10,8	14	10,1

material code	material	finish	hardness HRC	strenght class	temperature class
JDS10L	W1.7220.4 steel 35CrMo4	cadmium plated + dry film	44 max.	1100 MPa	235°C
JDS10C		cadmium plated			
JDS11L	W1.4944.4 alloy A286	passivated + dry film	28-36		315°C
JDS11A		silver plated			650°C

THREAD: profile ISO 5855.
MARKING: manufacturer identification α and letters MJ
PROCUREMENT SPEC: LN65016
ASTORI CALL-OUT: material code - dimensions code.
VARIATIONS: for left hand threads add letter S to dimensions code

reference
DIN65480
JN0106

HEX NUT, SELF-LOCKING
REDUCED HEX, MJ THREAD

JDS10
JDS11