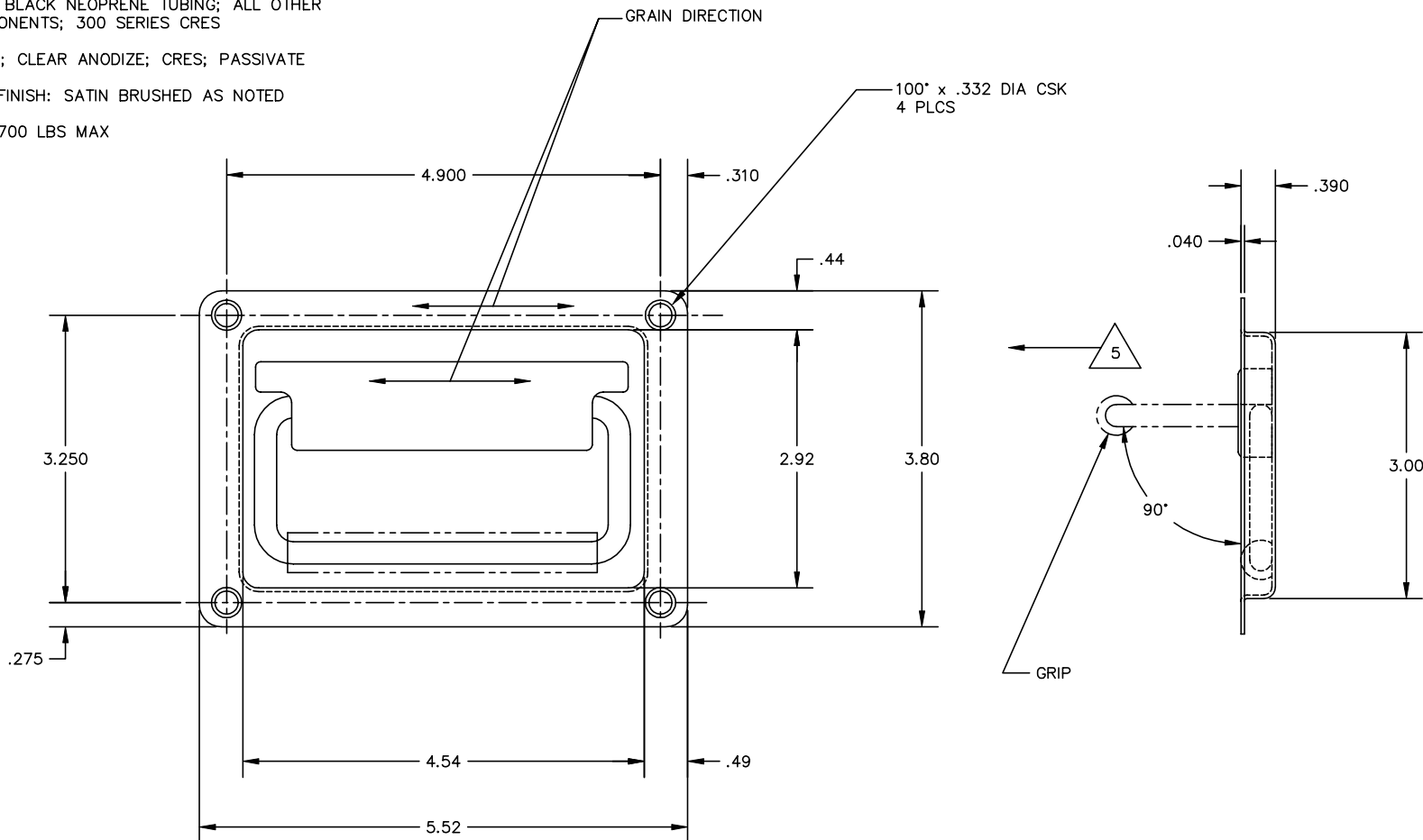


THE INFORMATION AND DESIGN HEREIN WAS ORIGINATED BY AND IS THE PROPERTY OF SKYLOCK INDUSTRIES INCORPORATED. SKYLOCK INDUSTRIES INCORPORATED RESERVES ALL PATENT, PROPRIETARY, DESIGN MANUFACTURING, REPRODUCTION, USE AND SALES RIGHTS THERETO, AND TO ANY ARTICLE DISCLOSED THEREIN EXCEPT TO THE EXTENT RIGHTS ARE EXPRESSLY GRANTED TO OTHERS. THE FOREGOING DOES NOT APPLY TO VENDOR PROPRIETARY PARTS.

REVISIONS				
ZONE	LTR.	DESCRIPTION	DATE	APPROVED
	NC	PRODUCTION RELEASE	7.24.92	SC

NOTES: UNLESS OTHERWISE SPECIFIED

1. REMOVE ALL BURRS AND SHARP EDGES
2. MAT'L: BLOCK; ALUM ALLOY; BAIL; 17-4 PH CRES; GRIP; BLACK NEOPRENE TUBING; ALL OTHER COMPONENTS; 300 SERIES CRES
3. FINISH: ALUM; CLEAR ANODIZE; CRES; PASSIVATE
4. DECORATIVE FINISH: SATIN BRUSHED AS NOTED
5. PULL LOAD: 700 LBS MAX



-1		HANDLE ASSY		
QTY. REQ'D	PART / IDENT NO.	DESCRIPTION	MATERIAL / SPECIFICATION	ITEM NO.
UNLESS OTHERWISE SPECIFIED: DIMENSIONS ARE IN INCHES		CONTRACT NO.	 SKYLOCK INDUSTRIES INCORPORATED MONROVIA, CALIFORNIA, USA	
TOLERANCES		CUSTOMER		
DECIMALS .XX ±.03	ANGULAR ± 0 30'	DRAWN BY S. CSIK	DATE	
DO NOT SCALE DRAWING		CHECK	HANDLE ASSY	
NEXT ASSY	FINAL ASSY	DESIGN		
USED ON	DESIGN ACTIVITY		SIZE C	REV. NC
FINISH	ACT WT	CALC WT	FSCM NO. 51941	DRAWING NO. 20781
			SCALE 1/1	RELEASE DATE 7.24.92 SHEET 1 OF 1

DRAWING NO. SHEET OF