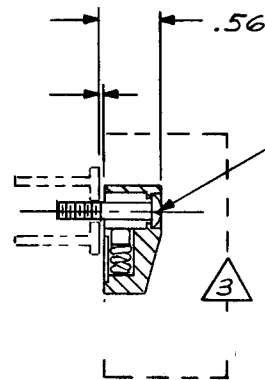
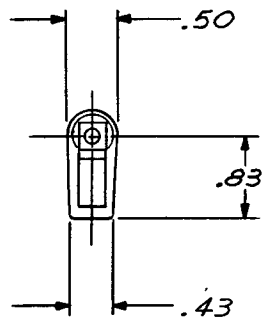
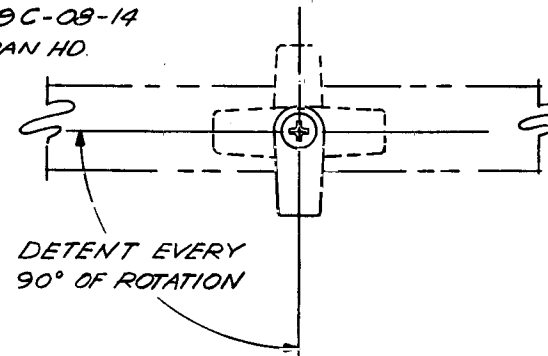


| REVISIONS | | | |
|-----------|--------------|------------------|----------|
| SYM | DESCRIPTION | DATE | BY |
| | EFFECTIVE ON | DISP EXIST PARTS | APPROVAL |



MS27039C-09-14
SCREW, PAN HD.



4 STATIC LOAD 600 LB MAX.

3 DECORATIVE FINISH: SATIN BUFF
AND CLEAR ANODIZE

2 FINISH: ALUM PARTS; ANODIZED
GRES PARTS; PASSIVATED
CAM; DRY FILM LUBRICATED

1 MATL: TURN; ALUM ALLOY
DETENT PLUG; NYLON
ALL OTHER PARTS 300 SERIES GRES

NOTES: UNLESS OTHERWISE SPECIFIED

| REQD | PART NUMBER | DESCRIPTION | MATERIAL OR NOTE |
|---|-------------|-------------------------------|--|
| | -1 | RETAINER | 1 2 |
| LIST OF MATERIAL | | | |
| UNLESS OTHERWISE NOTED DIMENSIONS ARE IN INCHES. TOLERANCES ON: DECIMALS .XX ± .03 .XXX ± .010 ANGLES ± 0° 30' DRILLED HOLES PER ANSI10387 | | CONTRACT NO. | SKYLOCK INDUSTRIES, INC. BALDWIN PARK, CALIFORNIA |
| SURFACE ROUGHNESS | | DRAFTERMAN M/Tob 8-29-74 | |
| HEAT TREAT | | CHECKER CEB 8-29-74 | 1/4 TURN RETAINER |
| FINISH | | ENGINEER Macmillan 8-30-74 | |
| INSPECT | | PROD. APPD D.J. 8-30-74 | SIZE CODE IDENT NO. C 51941 20140 |
| REF. NO. | | APPROVAL Macmillan 8-30-74 | |
| NEXT ASSY | USED ON | | SCALE 1/1 WT CALC WT ACT SHEET 1 OF 1 |
| APPLICATION | | | |