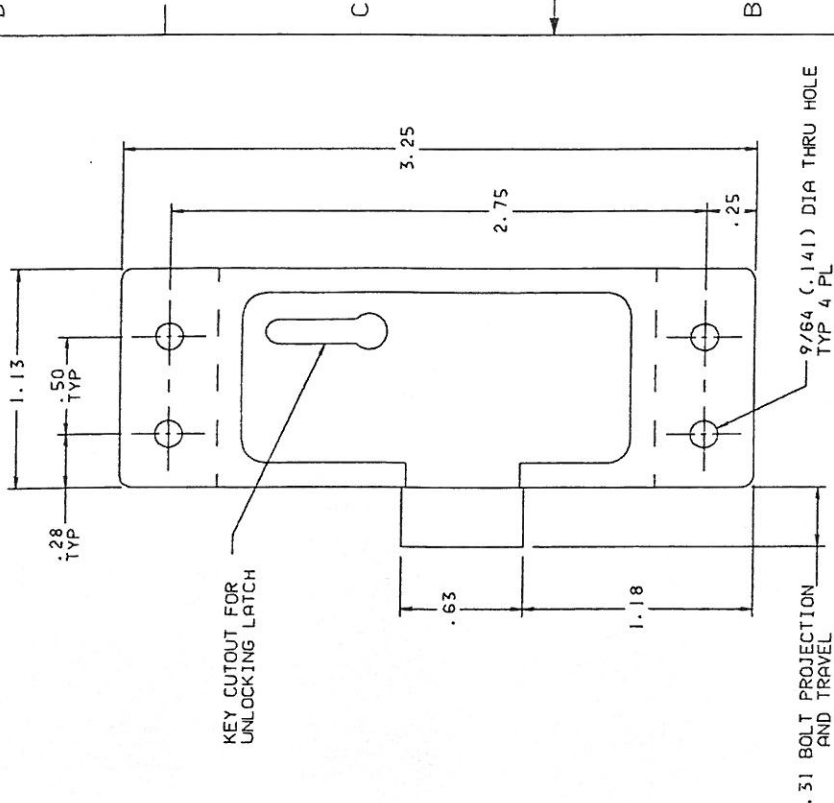
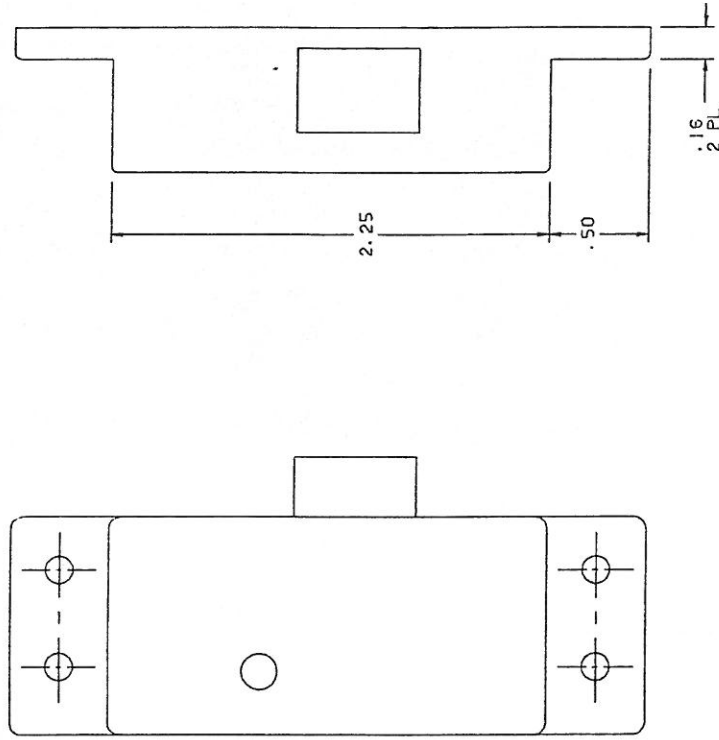


THE INFORMATION AND DESIGNATION CONTAINED HEREIN IS THE PROPERTY OF SKYLARK INDUSTRIES INCORPORATED. SKYLARK INDUSTRIES INCORPORATED RESERVES ALL PATENT, PROPRIETARY, DESIGN, MANUFACTURING, AND TRADEMARK RIGHTS. NO PART OF THIS DOCUMENT IS TO BE REPRODUCED OR TRANSMITTED IN ANY FORM OR BY ANY MEANS, ELECTRONIC OR MECHANICAL, INCLUDING PHOTOCOPYING, RECORDING, OR BY ANY INFORMATION STORAGE AND RETRIEVAL SYSTEM, WITHOUT PERMISSION IN WRITING FROM SKYLARK INDUSTRIES INCORPORATED. THIS DOCUMENT IS UNCLASSIFIED AND IS NOT TO BE RELEASED TO OTHERS, THE FOREGOING DOES NOT APPLY TO VENDOR PROPRIETARY PARTS.

NOTES: UNLESS OTHERWISE SPECIFIED.

1. MAT 'L': ALL COMP'S: CRES.
2. FINISH: SATIN BRUSH.
3. PART NO. TO BE ETCHED ON NON-VISIBLE SURFACE OF LATCH ASSY.



REVISIONS		DESCRIPTION	DATE	APPROVED
ZONE	LIP	NC PRODUCTION RELEASE	11-21-96	T. CSJK

PART NO.	DESCRIPTION	DATE	SCALE	SHEET	OF
-1	SLAM LATCH (VIA RAIL #146326)	11-21-96	2:1	1	1
PARTS LIST		SKYLARK INDUSTRIES INCORPORATED MONROVIA CALIFORNIA U.S.A.			
UNLESS OTHERWISE SPECIFIED DIMENSIONS ARE IN INCHES		DRAWN BY T. CSJK			
TOLERANCES ON DIMENSIONS		CHECKED			
FRACTIONS ANGLES DRILLED HOLES		ENGINEER			
.XX, .03 1/16" AND 1/8"		PROJECT			
.XX, .03 1/16" AND 1/8"		APPROVAL D. SHORT			
.XX, .03 1/16" AND 1/8"		APPROVE			
DO NOT SCALE THIS DRAWING		USED ON			
MATERIAL - FINISH		SIZE			
NEXT ROSS		C 51941			
FINAL ROSS		SCALE 2:1			
		REV. NC			
		20931			
		11-21-96			
		11-21-96			

SLAM LATCH-KEY UNLOCK