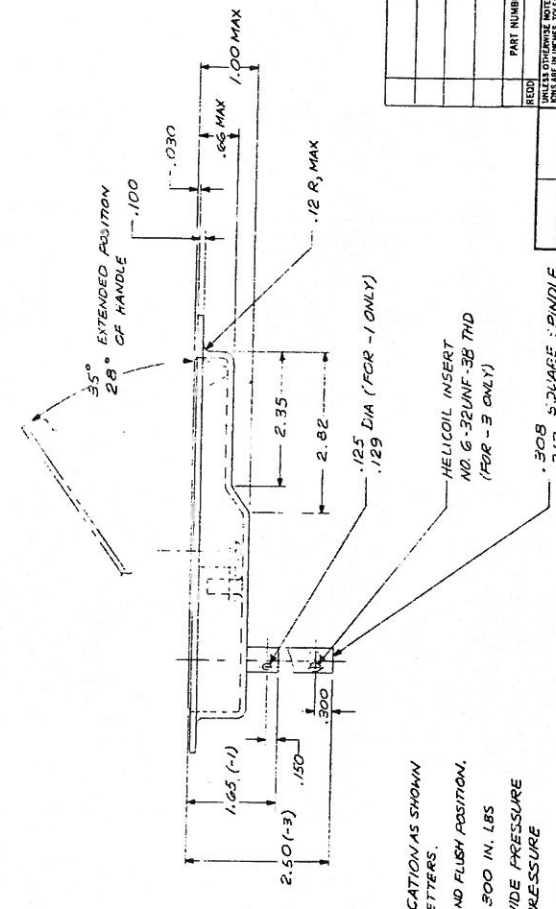
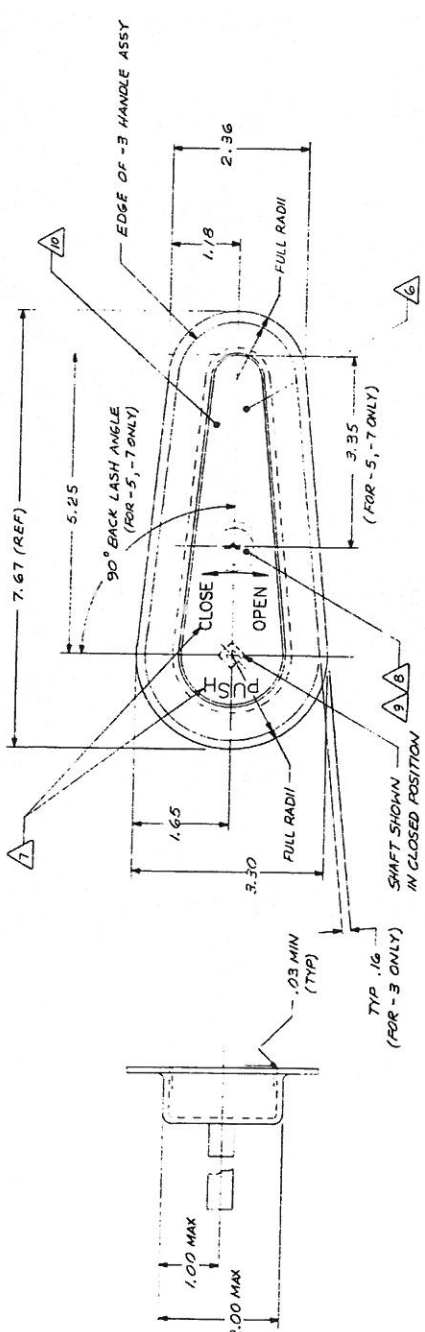


REVISIONS		DATE	BY
1	SYN EFFECTIVE ON		
2	DESCRIPTION		
3	DISP ENST PARTS		
4			
5			
6			
7			
8			



1. DECORATIVE FINISH; HANDLE ONLY SATIN BRUSH AND CLEAR BAKING ENAMEL.
2. ALL CYLINDERS KEYS ALIKE UNLESS OTHERWISE SPECIFIED ON SALES ORDER.
3. LOCK-SET SUPPLIED AT CUSTOMER'S REQUEST.
4. LETTERS TO BE ENGRAVED IN APPROXIMATE LOCATION AS SHOWN "PUSH" .25 HIGH LETTERS, "OPEN", "CLOSE" .15 HIGH LETTERS.
5. HANDLE SHALL BE SPRING LOADED TO NEUTRAL AND FLUSH POSITION.
6. ULTIMATE TORQUE ON HANDLE MECHANISM IS 300 IN. LBS.
7. OUTSIDE HANDLE AND LOCK ASSEMBLY TO PROVIDE PRESSURE SEAL FOR 8 P.S.I. ULTIMATE INTERNAL AIRCRAFT PRESSURE.
8. FINISH: ALUM PARTS; ANODIZE CRES PARTS; PASSIVATE.
9. MATL: CASE AND HANDLE 35G-T6 ALUM., SPINDLE AND OTHER PARTS 300 SERIES CRES.

NOTE: UNLESS OTHERWISE SPECIFIED REMOVE ALL BURRS AND SHARP EDGES

REC'D	PART NUMBER	DESCRIPTION	MATERIAL OR NOTE
	-7	HANDLE ASSY	8 9
	-5	HANDLE ASSY	8 9
	-3	HANDLE ASSY (WITHOUT LOCK-SET)	
	-1	HANDLE ASSY (WITHOUT LOCK-SET)	

CONTRACT NO.	SKYLOCK INDUSTRIES, INC.
100-100	510 EL MONTE, CALIFORNIA
DRAFTSMAN	DATE
CHKD BY	DATE
APPROVED BY	DATE
PROD. APP'D	DATE
INSPECT	DATE
USED ON	
APPLICATION	
REF. NO.	
SIZE	D 51941
SCALE	1/1
WT. ACT	20501
WT. CALC	
SHEET	1
TOTAL	1

LIST OF MATERIAL
SKYLOCK INDUSTRIES, INC.
510 EL MONTE, CALIFORNIA
HANDLE ASSEMBLY - DOOR
SIZE D 51941
SCALE 1/1
WT. ACT 20501
WT. CALC
SHEET 1
TOTAL 1