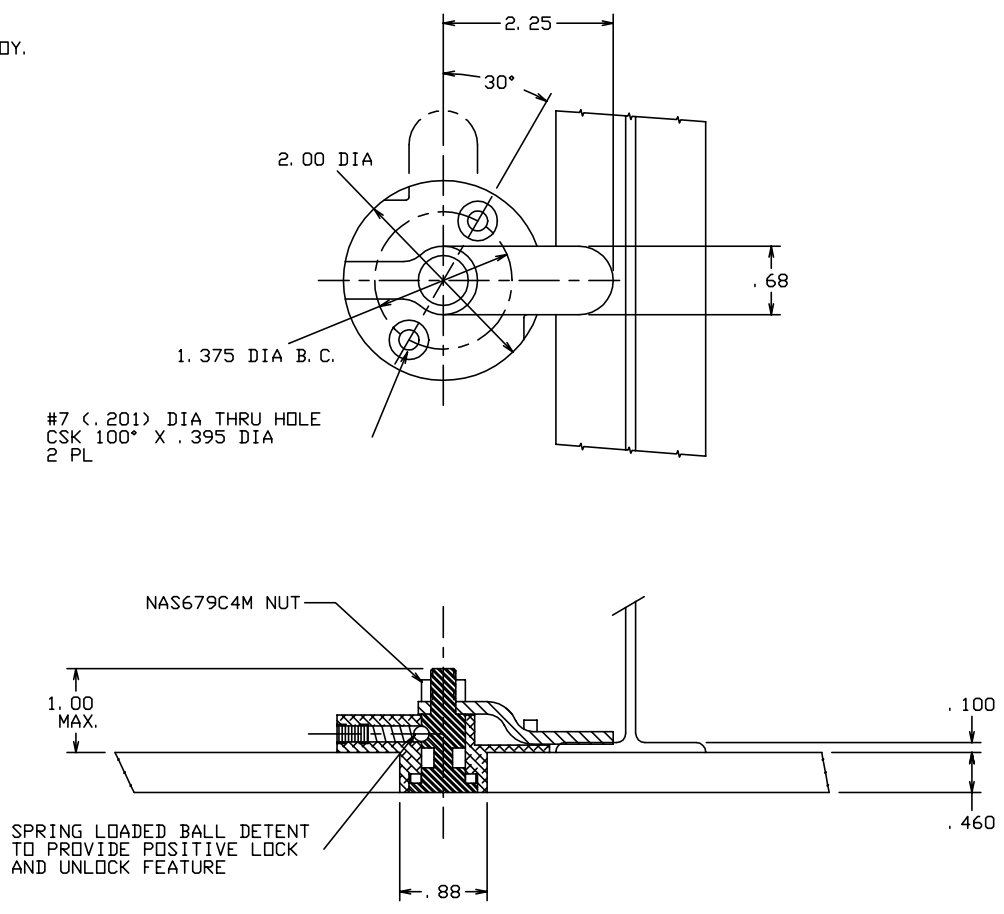



THE INFORMATION AND DESIGN HEREIN WAS ORIGINATED BY AND IS THE PROPERTY OF SKYLOCK INDUSTRIES INCORPORATED. SKYLOCK INDUSTRIES INCORPORATED RESERVES ALL PATENT, PROPRIETARY, DESIGN MANUFACTURING, REPRODUCTION, USE AND SALES RIGHTS THERE TO, AND TO ANY ARTICLE DISCLOSED THEREIN EXCEPT TO THE EXTENT RIGHTS ARE EXPRESSLY GRANTED TO OTHERS. THE FOREGOING DOES NOT APPLY TO VENDOR PROPRIETARY PARTS.

REVISIONS				
ZONE	LTR	DESCRIPTION	DATE	APPROVED
	NC	PRODUCTION RELEASE	7-24-92	T. CSIK
	A	ADDED -403	9-29-95	T. CSIK

- NOTES: UNLESS OTHERWISE SPECIFIED.
- REMOVE ALL BURRS AND BREAK SHARP EDGES.
  - MAT'L: STUD AND CAM; ST. STL., HOUSING; ALUM. ALLOY, SPACER (-403 ONLY); 6061-T6 ALUM. ALLOY.
  - FINISH: ST. STL.; PASSIVATE, ALUM.; CLEAR ANODIZE.



	-403	LATCH ASSY	(SHT. 2)			
	-401	LATCH ASSY				
QTY REQD	PART NO.	DESCRIPTION	MATERIAL	SIZE	SPECIFICATION	ITEM NO.
PARTS LIST						
UNLESS OTHERWISE SPECIFIED		DRAWN BY	T. CSIK	7-24-92	 SKYLOCK INDUSTRIES INCORPORATED MONROVIA CALIFORNIA U. S. A.	
DIMENSIONS ARE IN INCHES		CHECKED				
TOLERANCES ON		ENGINEER				
DECIMALS ANGLES DRILLED HOLES		PROJECT				
.X ± .1 ± 0° 30' AND 10387		APPROVAL	T. CSIK	7-24-92	LATCH ASSY CEILING PANEL	
.XX ± .03		APPROVAL				
.XXX ± .010		APPROVAL				
DO NOT SCALE THIS DRAWING						
MATERIAL - FINISH		USED ON	SIZE	CODE IDENT. NO.	DRAWING NO.	REV.
NEXT ASSY			C	51941	20780	A
FINAL ASSY			SCALE	1: 1	VT.	SHEET 1 OF 2

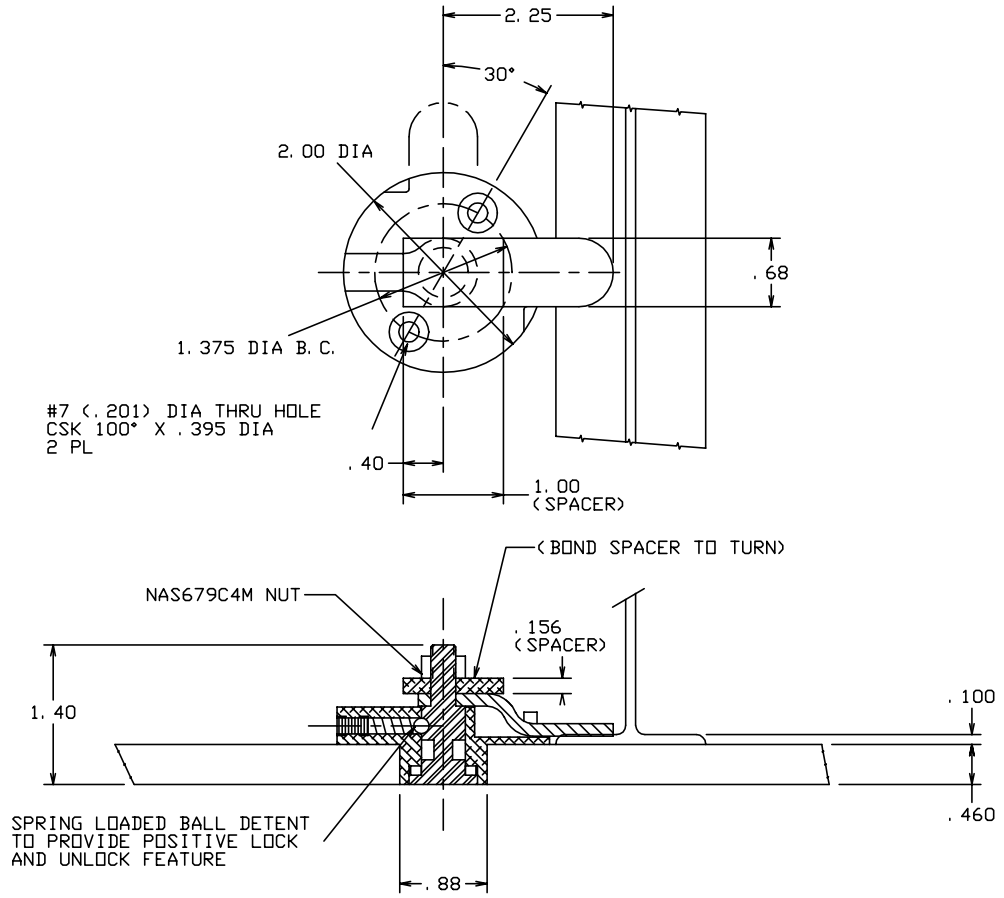
4

3


2

1

REVISIONS				
ZONE	LTR	DESCRIPTION	DATE	APPROVED
		SEE SHT. 1 FOR NOTES		



-403 LATCH ASSY

 SKYLOCK INDUSTRIES INCORPORATED MONROVIA CALIFORNIA U. S. A.			
LATCH ASSY CEILING PANEL			
SIZE C	CODE IDENT. NO. 51941	DRAWING NO. 20780	REV. A
SCALE 1: 1	VT.	SHEET 2	OF 2

4

3

2

1