

4

3

2

1


THE INFORMATION AND DESIGN HEREIN WAS ORIGINATED BY AND IS THE PROPERTY OF SKYLOCK INDUSTRIES INCORPORATED. SKYLOCK INDUSTRIES INCORPORATED RESERVES ALL PATENT, PROPRIETARY, DESIGN MANUFACTURING, REPRODUCTION, USE AND SALES RIGHTS THERE TO, AND TO ANY ARTICLE DISCLOSED THEREIN EXCEPT TO THE EXTENT RIGHTS ARE EXPRESSLY GRANTED TO OTHERS. THE FOREGOING DOES NOT APPLY TO VENDOR PROPRIETARY PARTS.

REVISIONS				
ZONE	LTR	DESCRIPTION	DATE	APPROVED
	NC	PRODUCTION RELEASE	12-14-91	T. CSIK
	A	REVISED CONFIGURATION PER FIRST ARTICLE, ADDED -403/-404 PER CUSTOMER REQUEST	1-22-92	T. CSIK
	B	ADDED -405, -406	8-14-92	T. CSIK
	C	ADDED ALTERNATE LOAD POINT	10-8-92	T. CSIK
	D	ADDED -407/-408	5-24-93	T. CSIK
	E	ADDED -409/-410	2-8-94	T. CSIK
	F	SEE ECN F	5/25/99	T. CSIK
	G	SEE ECN G		

NOTES: UNLESS OTHERWISE SPECIFIED.

- REMOVE ALL BURRS AND BREAK SHARP EDGES.
- MAT'L REF.: RETAINER; 7075-T6/T651 PER ASTM B-221, OR EQUIV. STUD; 17-4PH CRES, COND. A, PER AMS-5643 OR EQUIV. ALL OTHER PARTS; 303 CRES, COND. A, PER AMS-5640N OR EQUIV.
- FINISH REF.: ALUM.; CLEAR ANODIZE PER MIL-A-8625, CLASS 1, OR EQUIV., CRES; PASSIVATE PER AMS-QQ-P-35, TYPE II OR EQUIV. STUD; HEAT TREAT TO COND. H900 PER MIL-H-6875 OR EQUIV.
- DECORATIVE FINISH REF.: RETAINER; BRIGHT POLISH, AND ANODIZE PR MIL-A-8625, TYPE II, CLASS 2, DYED CANDY APPLE RED.
- THE FOLLOWING STATIC LOAD IS FOR REFERENCE USE ONLY. IT IS PROVIDED FOR CUSTOMER ENGINEERING TO DETERMINE THE GENERAL SUITABILITY OF THE PRODUCT FOR ITS INTENDED USE. ALTHOUGH SKYLOCK IS PROVIDING THE REFERENCE STATIC LOAD, THE CUSTOMER IS ULTIMATELY RESPONSIBLE FOR CERTIFICATION OF THE PRODUCT FOR ITS SPECIFIC APPLICATION. REFERENCE STATIC LOAD: 2500 LBS. MAX.
- SHAFT NEEDS NO TORQUE ADJUSTMENT. TIGHTEN SHAFT AS MUCH AS POSSIBLE WHEN INSTALLING RETAINER.
- APPLICABLE TO FAA-PMA REPLACEMENT OR MODIFICATION PARTS ONLY. PER FAR 45.15, PARTS WILL BE IDENTIFIED WITH:
 - FAA-PMA.
 - SKYLOCK IND. INC.
 - PART NO.
 - AIRCRAFT INSTALLATION ELIGIBILITY.

4.00		-410	RETAINER	(90° RIGHT HAND)	120740-410
4.00		-409	RETAINER	(90° LEFT HAND)	120740-409
2.50		-408	RETAINER	(90° RIGHT HAND)	120740-408
2.50		-407	RETAINER	(90° LEFT HAND)	120740-407
4.00		-406	RETAINER	(90° RIGHT HAND W/ 30° DETENT)	120740-406
4.00		-405	RETAINER	(90° LEFT HAND W/ 30° DETENT)	120740-405
5.00		-404	RETAINER	(90° RIGHT HAND)	120740-404
5.00		-403	RETAINER	(90° LEFT HAND)	120740-403
4.00		-402	RETAINER	(90° RIGHT HAND)	120740-402
4.00		-401	RETAINER	(90° LEFT HAND)	120740-401

PART NO.		DESCRIPTION	MATERIAL	SIZE	SPECIFICATION	MAKE FROM
PARTS LIST						
UNLESS OTHERWISE SPECIFIED		DRAWN BY	T. CSIK	10-14-91	 SKYLOCK INDUSTRIES INCORPORATED MONROVIA CALIFORNIA U. S. A.	
DIMENSIONS ARE IN INCHES		CHECKED	L. GARCIA	5/20/99		
TOLERANCES ON		ENGINEER	T. CSIK	5/25/99		
DECIMALS ANGLES DRILLED HOLES		MFG	P. MATSUOKA	5/27/99		
.X ± .1 ± 0° 30' AND 10387		QC	J. VIVIRITO	5/27/99	20740 RETAINER	
.XXX ± .010						
DO NOT SCALE THIS DRAWING						
MATERIAL - FINISH		USED ON		SIZE	CODE IDENT. NO.	DRAWING NO.
NEXT ASSY				C	51941	20740
MANUFACTURE IN ACCORDANCE WITH SKYLOCK IND. INC., QUALITY CONTROL MANUAL QC.001				SCALE	1: 1	VT.
				SHEET 1		OF 2

4

3

2

1

4

3

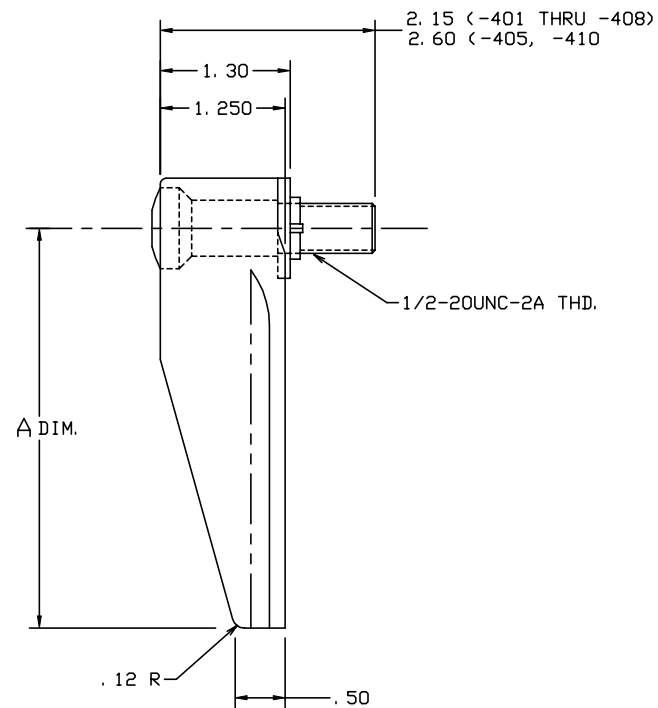
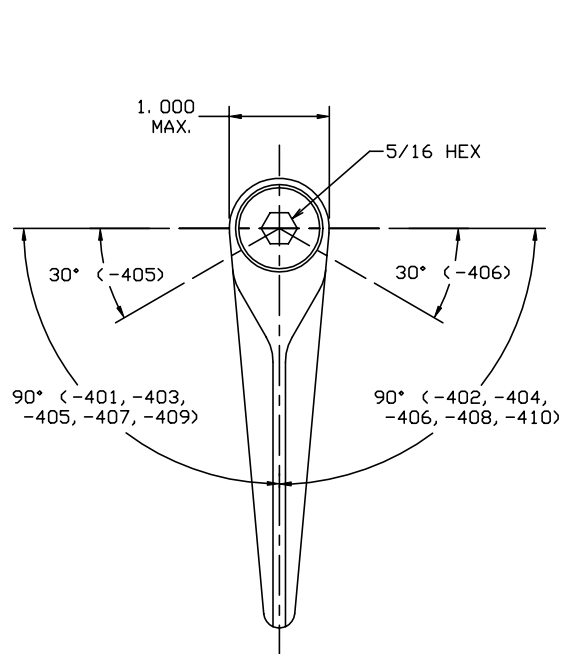
2

1

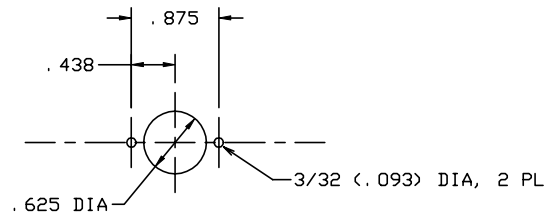
THE INFORMATION AND DESIGN HEREIN WAS ORIGINATED BY AND IS THE PROPERTY OF SKYLOCK INDUSTRIES INCORPORATED. SKYLOCK INDUSTRIES INCORPORATED RESERVES ALL PATENT, PROPRIETARY, DESIGN MANUFACTURING, REPRODUCTION, USE AND SALES RIGHTS THERE TO, AND TO ANY ARTICLE DISCLOSED THEREIN EXCEPT TO THE EXTENT RIGHTS ARE EXPRESSLY GRANTED TO OTHERS. THE FOREGOING DOES NOT APPLY TO VENDOR PROPRIETARY PARTS.

REVISIONS

ZONE	LTR	DESCRIPTION	DATE	APPROVED
		SEE SHT. 1 FOR NOTES		



TYPICAL RETAINER



SUGGESTED PANEL CUTOUT

SKYLOCK INDUSTRIES INCORPORATED
MONROVIA CALIFORNIA U. S. A.

20740 RETAINER

SIZE	CODE IDENT. NO.	DRAWING NO.	REV.
C	51941	20740	G
SCALE	1: 1	VT.	SHEET 2 OF 2

4

3

2

1