

The information and design herein was originated by and is the property of Skylock Industries Incorporated. Skylock Industries Incorporated reserves all patent, proprietary, design manufacturing, reproduction, use and sales rights thereto, and to any article disclosed therein except to the extent rights are expressly granted to others. The foregoing does not apply to vendor proprietary parts.

zone	tr	description	date	approved
	G	REDRAW	12-2-88	TS
	H	ADDED - 31 & -32	8-26-93	K
	J	ADDED -30	3-24-95	TC

12 FINISH SURFACE NOTED PER W/PS 306
010 THK. MIN. (GRAY COLOR)

11 ROTATION: 180° DETENTED EVERY 90°

10 ROTATION: 90° RIGHT HAND

9 ROTATION: 90° LEFT HAND

8 STATIC LOAD: 800 LBS MAX. (-13 ONLY)

7 STATIC LOAD: 1000 LBS MAX.

6 QUALIFICATION TESTED BEYOND 150,000
CYCLES.

5 DECORATIVE FINISH: BRIGHT BUFF & CANDY
APPLE RED ANODIZE

4 DECORATIVE FINISH: SATIN BRUSH

3 FINISH: ALUM PARTS; ANODIZE, CRES PARTS;
PASSIVATE, SCREW; CAD PLATE PER
QQ-P-416, CLASS 2, TYPE 1.

2 MAT'L: TURN; ALUM ALLOY, CAM; 303 CRES,
ALL OTHER PARTS; 300 SERIES CRES


1. REMOVE ALL BURRS AND SHARP CORNERS.

NOTES: UNLESS OTHERWISE SPECIFIED.

	-32	RETAINER	10	1.19	1.50	—	.25	.56/.58
	-31	RETAINER	9	1.19	1.50	—	.25	.56/.58
	-30	RETAINER	9	1.19	1.50	—	.25	.56/.58
	-29	RETAINER	10	1.19	1.50	—	.25	.56/.58
	-27	RETAINER	11	2.33	2.64	—	.25	.56/.58
	-26	RETAINER	9	1.44	1.75	—	.25	.56/.58
	-25	RETAINER	10	1.44	1.75	—	.25	.56/.58
	-24	RETAINER	9, 12	3.00	3.31	2.70	2.06	.56/.58
	-23	RETAINER	10, 12	3.00	3.31	2.70	2.06	.56/.58
	-22	RETAINER	10, 12	3.25	3.56	2.95	.25	.56/.58
	-21	RETAINER	9, 12	3.25	3.56	2.95	.25	.56/.58
	-20	RETAINER	10, 12	1.19	1.50	.90	.25	.56/.58
	-19	RETAINER	9, 12	1.19	1.50	.90	.25	.56/.58
	-17	RETAINER	11	1.19	1.50	—	.25	.56/.58
	-16	RETAINER	10	1.19	1.50	—	.25	.56/.58
	-15	RETAINER	9	1.19	1.50	—	.25	.56/.58
	-13	RETAINER	11, 8	2.33	2.64	—	.25	.62
	-12	RETAINER	9	1.44	1.75	—	.25	.62
	-11	RETAINER	10	1.44	1.75	—	.25	.62
	-10	RETAINER	9, 12	3.00	3.31	2.70	2.06	.62
	-9	RETAINER	10, 12	3.00	3.31	2.70	2.06	.62
	-8	RETAINER	10, 12	3.25	3.56	2.95	.25	.62
	-7	RETAINER	9, 12	3.25	3.56	2.95	.25	.62
	-6	RETAINER	10, 12	1.19	1.50	.90	.25	.62
	-5	RETAINER	9, 12	1.19	1.50	.90	.25	.62
	-3	RETAINER	11, 5	1.19	1.50	—	.25	.62
	-2	RETAINER	10	1.19	1.50	—	.25	.62
	-1	RETAINER	9	1.19	1.50	—	.25	.62

qty reqd	part no	description	A DIM	B DIM	C DIM	D DIM	E DIM	item no

parts list

unless otherwise specified	drawn by	SINGELAKIS, T	12-2-88	 Skylock Industries Incorporated Monrovia California
dimensions are in inches	checked			
tolerances on decimals angles drilled holes	engineer			
project	project			
application	approval			
unless otherwise specified	do not scale this drawing	approval		

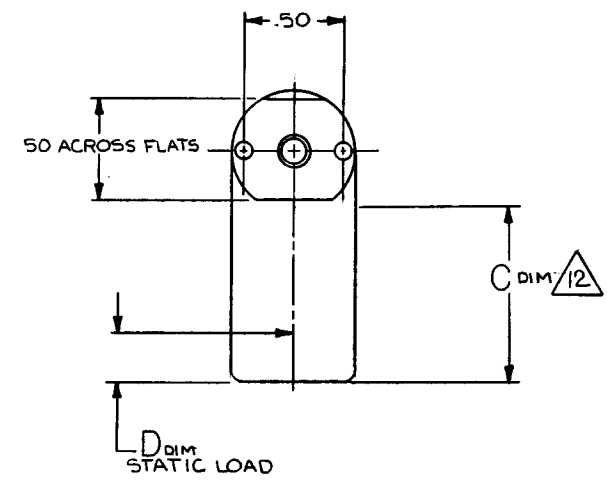
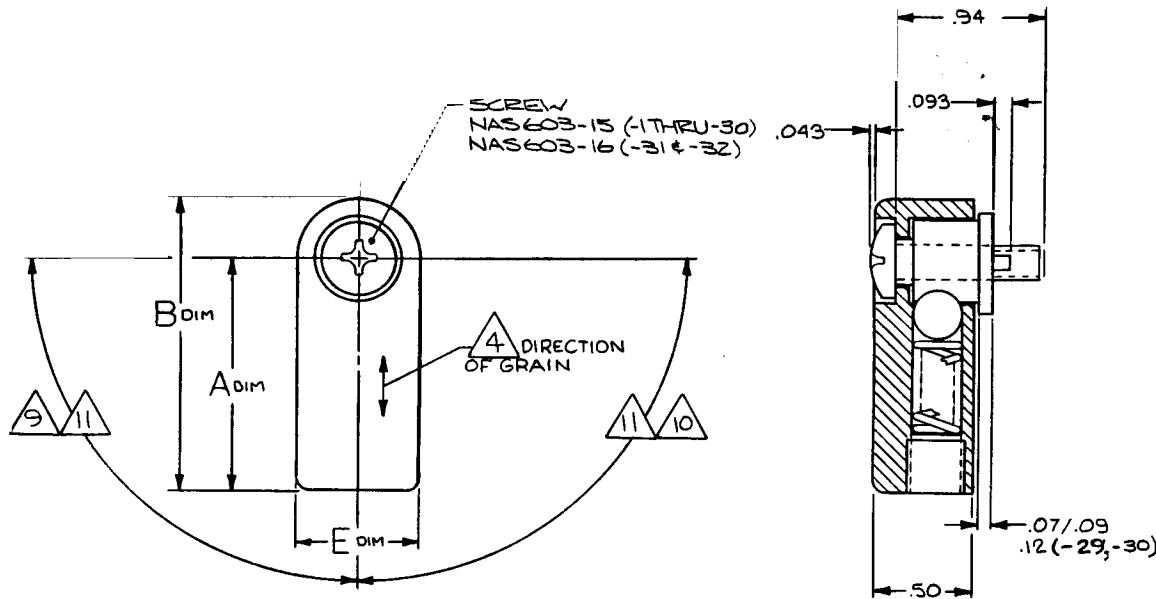
1/4 TURN
RETAINER

used on	next assy	final assy
application	qty reqd	
interpret drawing in accordance with MIL-D-1000		
remove all burrs break sharp edges .010 max		
all corner and fillet radii to be .020 max		

size	code ident no	drawing no	REV
C	51941	20285	J
scale	1 To 1	wt	sheet 1 of 2

The information and design herein was originated by and is the property of Skylock Industries Incorporated. Skylock Industries Incorporated reserves all patent, proprietary, design manufacturing, reproduction, use and sales rights thereto, and to any article disclosed therein except to the extent rights are expressly granted to others. The foregoing does not apply to vendor proprietary parts.

zone	itr	description	date	approved
		SEE SHT. 1 FOR NOTES	12-2-88	TS



1. REMOVE ALL BURRS AND SHARP CORNERS.

NOTES: UNLESS OTHERWISE SPECIFIED.

use on	next assy	final assy
application		qty reqd
unless otherwise specified		

qty reqd	part no	description	material	size	specification	item no
parts list						
unless otherwise specified		drawn by	Skylock Industries Incorporated Monrovia California			
dimensions are in inches.		checked	SILVIELA ELS	12-2-88		
tolerances on		engineer				
decimals	angles	drilled holes				
.X ± .1	± 0° 30'	AND 10387				
.XX ± .03						
.XXX ± .010						
do not scale this drawing		approval				
material — finish						
size	code ident no	drawing no	rev			
C	51941	20285	5			
scale 2 TO 1	wt	sheet 2	of 2			