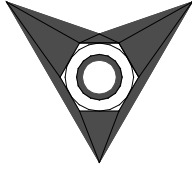
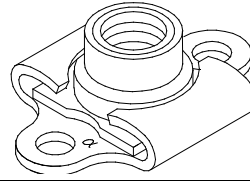


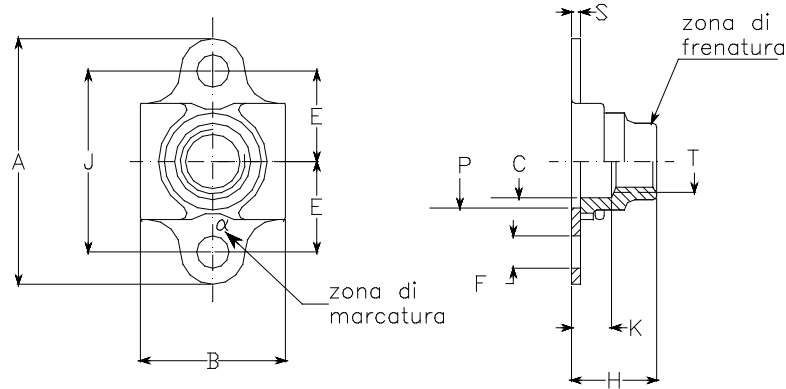
PAOLO ASTORI



PAOLO ASTORI s.r.l.  
via Mirabella 9-MAGGIATE SUP.  
I 28013-GATTICO (NO)



**F750**  
**F751**



dimensioni in mm. dimensions in mm.

dimensions code	thread T	A ±0,2	B max.	C ±0,05	E ±0,1	F +0,2	J ±0,05	H ±0,2	K min.	P min.	S max.	mass kg x 1000 pieces
04	M4 x 0,7 4H6H	17,0	11,0	4,2	6,0	2,5	12,00	5,0	1,6	5,0	0,7	1,1
05	M5 x 0,8 4H6H	19,0	12,0	5,2	7,0	2,5	14,00	6,0	1,6	6,0	0,7	1,3
06	M6 x 1 4H5H	21,0	13,2	6,2	8,0	2,5	16,00	7,0	1,6	7,0	0,7	1,8

codice materiali materials code	materiale material	finitura finish	durezza HR <sub>C</sub> hardness HR <sub>C</sub>	classe resistenza strenght class	classe temperatura temperature class
<b>F750L</b>	W1.7214.4 acciaio-steel	cadmiatura+MoS <sub>2</sub> cadmium plating+MoS <sub>2</sub>	43 max.	1100MPa	235°C
<b>F750C</b>	25CrMo4	cadmiatura cadmium plating			235°C
<b>F751X</b>		passivazione passivation	28 min.		425°C
<b>F751L</b>	W1.4944.4 lega A286	passivazione+MoS <sub>2</sub> +punto verde passivation+MoS <sub>2</sub> + green dot			315°C
<b>F751A</b>	A286 alloy	argentatura silver plating			425°C

FILETTO: profilo ISO 68; diam. interno secondo profilo MJ ISO 5855.

MARCATURA: simbolo  $\alpha$  del costruttore.

NORMA di costruzione e controllo: LN65016.

DESIGNAZIONE ASTORI: codice materiali-codice dimensioni.

Esempio: F750C-05 indica una olivetta a disegno F750, in acciaio cadmiato, filettatura M5.

THREAD: profile ISO 68; minor diameter according to MJ profile ISO 5855.

MARKING: manufacturer symbol  $\alpha$

PROCUREMENTS specification: LN65016.

ASTORI CALL OUT :materials code-dimensions code.

Example: F750C-5 designates a plate nut according to F750 drawing ,in steel, cadmium plated, with M5 thread.

Riferimenti  
LN29910

**OLIVETTA AUTOFRENANTE, FLOTTANTE**  
**ALETTA DOPPIA, MINIATURA**  
**PLATE NUT, SELF-LOCKING, FLOATING**  
**TWO LUGS, MINIATURE**

**F750**  
**F751**