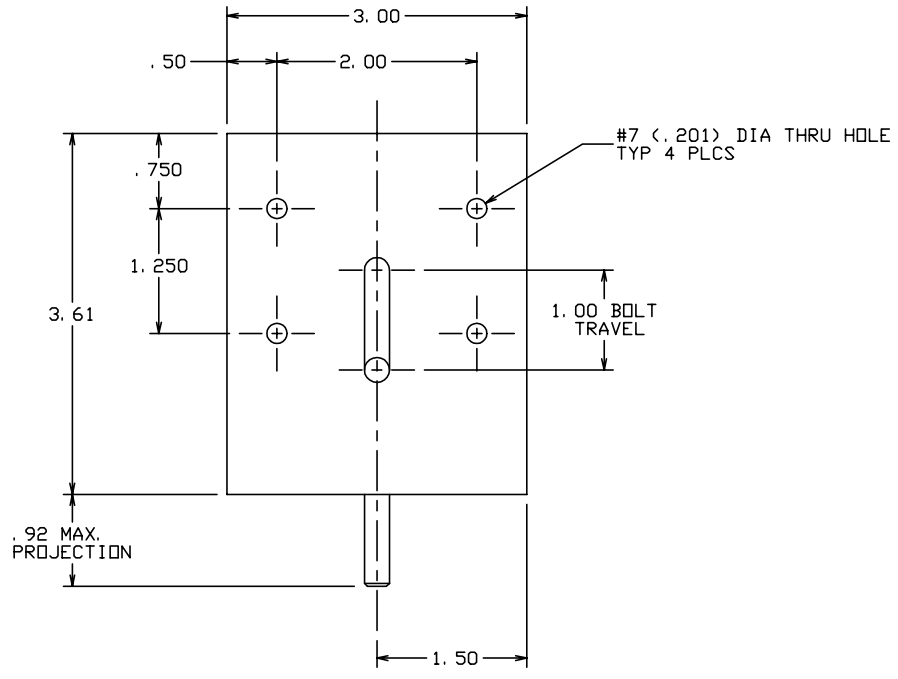
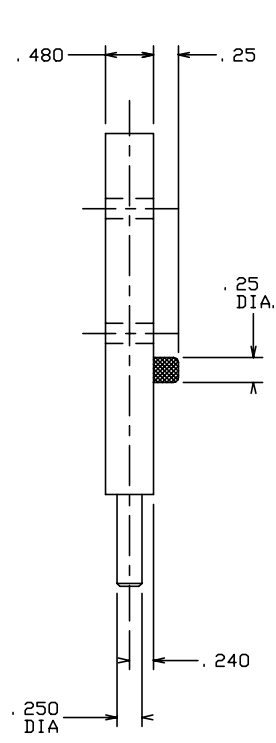


THE INFORMATION AND DESIGN HEREIN WAS ORIGINATED BY AND IS THE PROPERTY OF SKYLOCK INDUSTRIES INCORPORATED. SKYLOCK INDUSTRIES INCORPORATED RESERVES ALL PATENT, PROPRIETARY, DESIGN MANUFACTURING, REPRODUCTION, USE AND SALES RIGHTS THERE TO, AND TO ANY ARTICLE DISCLOSED THEREIN EXCEPT TO THE EXTENT RIGHTS ARE EXPRESSLY GRANTED TO OTHERS. THE FOREGOING DOES NOT APPLY TO VENDOR PROPRIETARY PARTS.

REVISIONS				
ZONE	LTR	DESCRIPTION	DATE	APPROVED
	NC	PRODUCTION RELEASE	3-21-94	T. CSIK
	A	DIM. IS .250 DIA, WAS .312 DIA, REVISED PER CUSTOMER REQUEST	4-18-94	T. CSIK



-1 SHEARPIN ASSY					
PART NO.	DESCRIPTION	MATERIAL SIZE SPECIFICATION			
PARTS LIST					
UNLESS OTHERWISE SPECIFIED	DRAWN BY T. CSIK	3-21-94	SKYLOCK INDUSTRIES INCORPORATED MONROVIA CALIFORNIA U. S. A.		
DIMENSIONS ARE IN INCHES	CHECKED				
TOLERANCES ON	ENGINEER				
DECIMALS ANGLES DRILLED HOLES	PROJECT				
.X ± .1 ± 0° 30' AND 10387 .XX ± .03 .XXX ± .010	APPROVAL T. CSIK	3-21-94			
DO NOT SCALE THIS DRAWING	APPROVAL				
MATERIAL - FINISH	USED ON	SIZE	CODE IDENT. NO.	DRAWING NO.	REV.
NEXT ASSY		C	51941	20889	A
FINAL ASSY		SCALE	1: 1	VT.	SHEET 1 OF 1

5. BOLT IS REMOVABLE FOR MODIFICATIONS AS REQUIRED.
 4. BOLT IS DETENTED IN THE EXTENDED AND RETRACTED POSITIONS.
 3. FINISH: ALUM.; CLEAR ANODIZE PER MIL-A-8625, TYPE II, CLASS I.
 2. MAT'L: HOUSING, BOLT, KNOB; 2024-T4 ALUM. ALLOY.
 1. REMOVE ALL BURRS AND BREAK SHARP EDGES.
- NOTES: UNLESS OTHERWISE SPECIFIED.