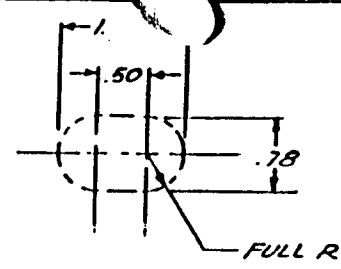
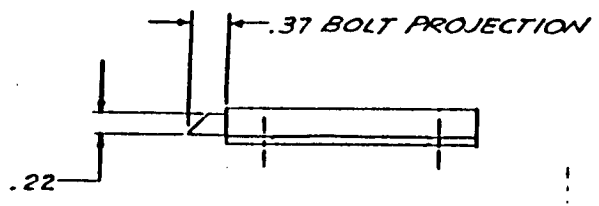
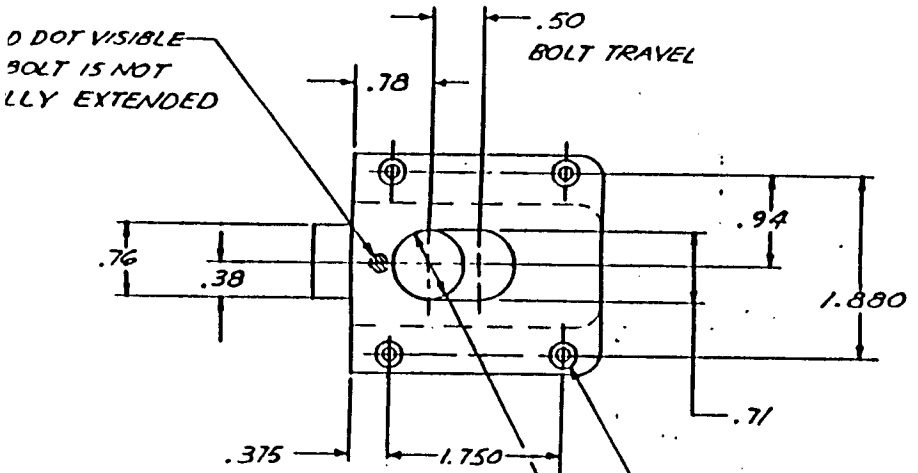


REVISIONS			DATE	BY
SYM	DESCRIPTION	DISP	EXIST	APPROVAL
EFFECTIVE ON				



DOOR CUTOUT INFORMATION

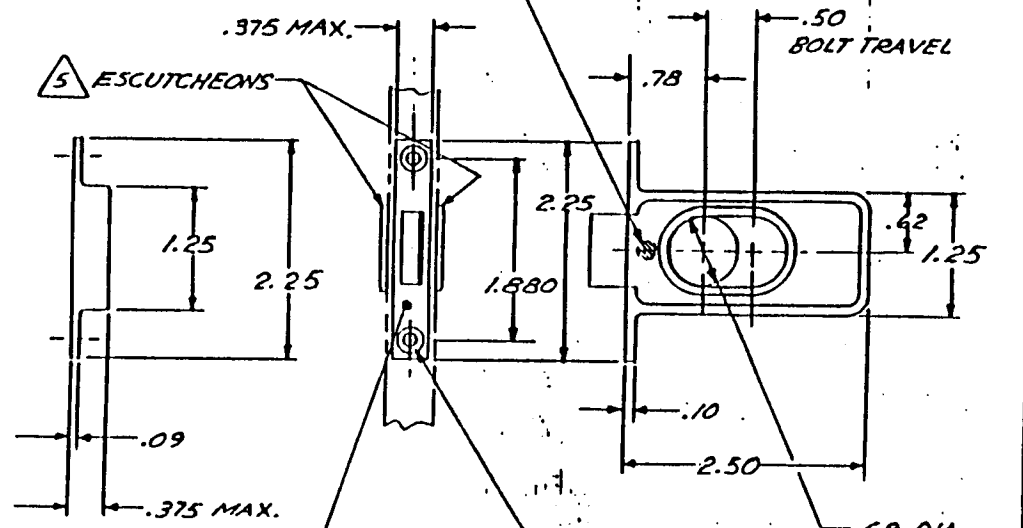


0 DOT VISIBLE
BOLT IS NOT
FULLY EXTENDED

-3 LATCH ASSY
(SAME AS -1 EXCEPT AS
SHOWN)

NO. 28 (.140) DIA
CSK 100° X .279 DIA.
4 PLACES

.69 DIA FINGER
PULL THRU



RED DOT VISIBLE IF BOLT
IS NOT FULLY EXTENDED

-1 LATCH ASSY

ESCUTCHEONS ARE OPTIONAL AND HAVE TO BE
PROCURED AS A SEPARATE ITEM.

OPERATION: RETRACT FINGER PULL .50 TO
DISENGAGE BOLT. BOLT IS HELD IN PLACE BY
DETENT IN EXTENDED AND RETRACTED POSITION

DECORATIVE FINISH: SATIN BUFF AND
CLEAR ANODIZED.

FINISH: ALUM PARTS; ANODIZED
GRES PARTS; PASSIVATE

MATL: HOUSING AND BOLT; ALUM ALY (6061-T6)
OTHER PARTS GRES.

NOTES: UNLESS OTHERWISE SPECIFIED

PART NUMBER	DESCRIPTION	MATERIAL OR NOTE
-3	LATCH ASSY	1 2
-1	LATCH ASSY	1 2

RECD		LIST OF MATERIAL	
UNLESS OTHERWISE NOTED DIMENSIONS ARE IN INCHES. TOLERANCES ON DECIMALS XX ± .03 300 ± .010 ANGLES ± 0° 30'		CONTRACT NO.	
SURFACE ROUGHNESS		DRAFTSMAN	SKYLOCK INDUSTRIES, INC. BALDWIN PARK, CALIFORNIA
HEAT TREAT		CHECKER	FINGER LATCH ASSEMBLY DEAD BOLT
FINISH		ENGINEER	SIZE CODE IDENT NO.
INSPECT		PROD. APPD	C 51941 20116
REF. NO.		APPROVAL	

NEXT ASSY	USED ON