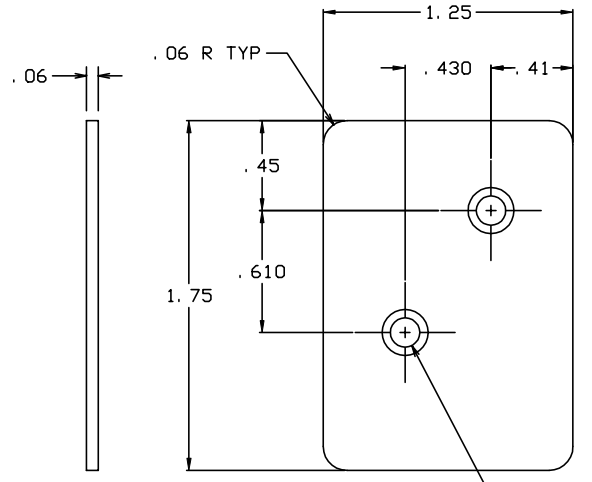
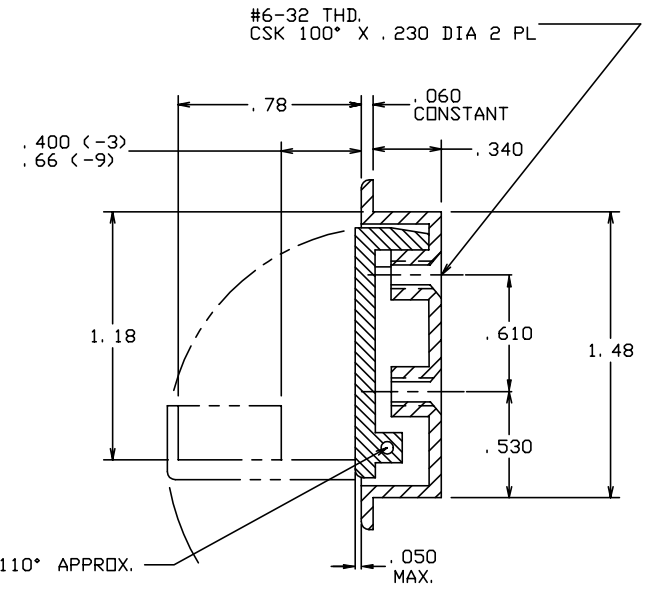
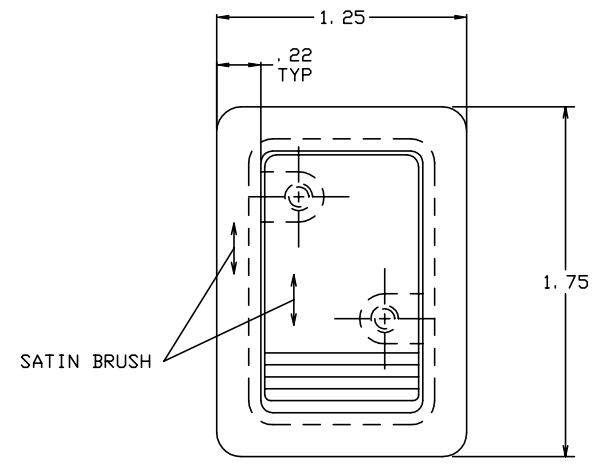


THE INFORMATION AND DESIGN HEREIN WAS ORIGINATED BY AND IS THE PROPERTY OF SKYLOCK INDUSTRIES INCORPORATED. SKYLOCK INDUSTRIES INCORPORATED RESERVES ALL PATENT, PROPRIETARY, DESIGN MANUFACTURING, REPRODUCTION, USE AND SALES RIGHTS THERE TO, AND TO ANY ARTICLE DISCLOSED THEREIN EXCEPT TO THE EXTENT RIGHTS ARE EXPRESSLY GRANTED TO OTHERS. THE FOREGOING DOES NOT APPLY TO VENDOR PROPRIETARY PARTS.

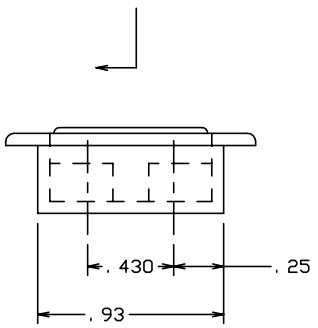
REVISIONS				
ZONE	LTR	DESCRIPTION	DATE	APPROVED
	NC	PRODUCTION RELEASE	8-16-82	M. F.
	A	SEE DCN 10639	8-26-82	M. F.
	B	SEE DCN 10654	11-22-82	M. F.
	C	SEE DCN 10742	1-23-83	M. F.
	D	SEE DCN 10783	4-2-84	M. F.
	E	REDRAWN & ADDED -207	6-4-92	T. C.
	F	SEE ECN F	10/14/99	T. CSIK

- NOTES: UNLESS OTHERWISE SPECIFIED.
- REMOVE ALL BURRS AND BREAK SHARP EDGES.
 - MAT'L REF.: CASE, HOOK, AND BACKPLATE; 6061-T6/T651 PER ASTM B-221, OR EQUIV. SPRING AND PIN; 302 CRES, COND B, PER ASTM-A-580, OR EQUIV.
 - FINISH REF.: ALUM.; SATIN BRUSH DIRECTION NOTED AND CLEAR ANODIZE PER MIL-A-8625. CRES PARTS; PASSIVATE PER AMS-QQ-P-35.
 - APPLICABLE TO FAA-PMA REPLACEMENT OR MODIFICATION PARTS ONLY. PER FAR 45.15, PARTS WILL BE IDENTIFIED WITH:
 - FAA-PMA.
 - SKYLOCK IND. INC.
 - PART NO.
 - AIRCRAFT INSTALLATION ELIGIBILITY.



#26 (-.147) DIA HOLE
CSK 100° X .230 DIA
2 PL
748-7 BACKPLATE

- 1 DOOR HOLD
- 3 DOOR HOLD
- 9 DOOR HOLD



QTY REQD	PART NO.	DESCRIPTION	MATERIAL	SIZE	SPECIFICATION	MAKE FROM
1	1	748-7	BACKPLATE			
1		-9	DOOR HOLD			120382-409
		-7	DOOR HOLD		<SEE SHT. 2>	120382-407
		-5	REMOVED			
	1	-3	DOOR HOLD			120382-403
		-1	DOOR HOLD			120382-401
-207	-205	QTY REQD PART NO.	DESCRIPTION	MATERIAL	SIZE SPECIFICATION	MAKE FROM

UNLESS OTHERWISE SPECIFIED DIMENSIONS ARE IN INCHES TOLERANCES ON DECIMALS ANGLES DRILLED HOLES .X ± .1 ± 0° 30' AND 10387 .XX ± .03 .XXX ± .010		DRAWN BY M. FOSTER 8-16-82 CHECKED L. GARCIA 9/23/99 ENGINEER T. CSIK 10/14/99 MFG P. MATSUOKA 10/14/99 QC J. VIVIRITO 10/20/99	SKYLOCK INDUSTRIES INCORPORATED MONROVIA CALIFORNIA U. S. A.		
DO NOT SCALE THIS DRAWING		DOOR HOLD OPEN			
MATERIAL - FINISH	USED ON			SIZE	CODE IDENT. NO.
NEXT ASSY		C	51941	20382	F
MANUFACTURE IN ACCORDANCE WITH SKYLOCK IND. INC., QUALITY CONTROL MANUAL QC.001		SCALE	2: 1	VT.	SHEET 1 OF 2

4

3

2

1

REVISIONS				
ZONE	LTR	DESCRIPTION	DATE	APPROVED
		SEE SHT. 1 FOR NOTES		

D

D

C

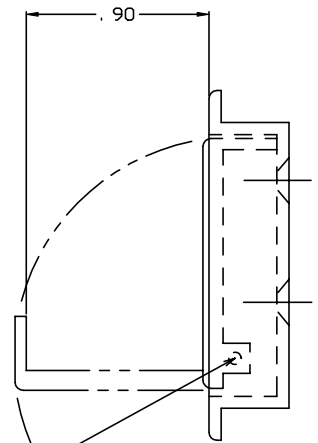
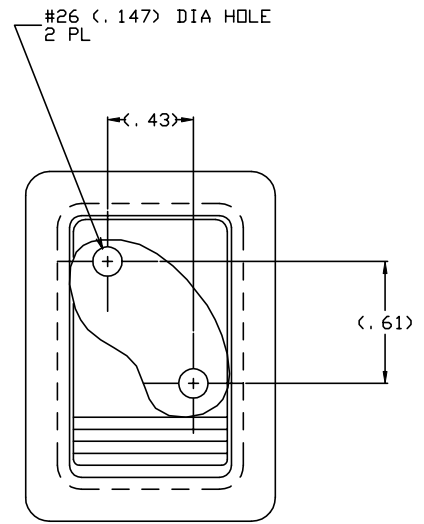
C

B

B

A

A



110° APPROX.

-7 DOOR HOLD


 SKYLOCK INDUSTRIES INCORPORATED
 MONROVIA CALIFORNIA U. S. A.

DOOR HOLD OPEN

SIZE	CODE IDENT. NO.	DRAWING NO.	REV.
C	51941	20382	F
SCALE	2: 1	VT.	SHEET 2 OF 2

4

3

2

1