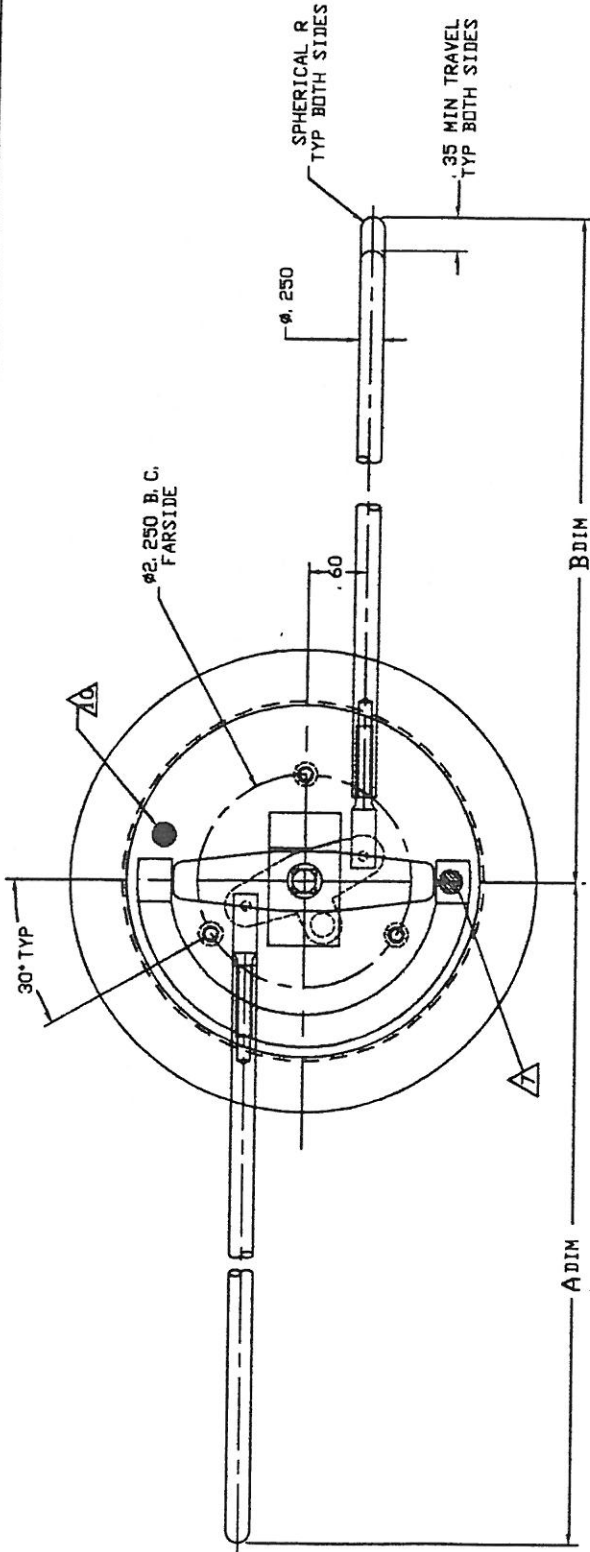


THE INFORMATION AND DATA CONTAINED HEREIN IS THE PROPERTY OF SYLVAN INDUSTRIES INCORPORATED. ALL RIGHTS RESERVED. REPRODUCTION, DISTRIBUTION, OR DISSEMINATION OF THIS INFORMATION TO ANY OTHER PERSON OR ENTITY IS STRICTLY PROHIBITED. THE INFORMATION IS NOT TO BE USED FOR ANY PURPOSE OTHER THAN THAT FOR WHICH IT WAS PROVIDED TO YOU. THE INFORMATION IS NOT TO BE USED FOR ANY PURPOSE OTHER THAN THAT FOR WHICH IT WAS PROVIDED TO YOU.



SYLVAN INDUSTRIES INCORPORATED
 HUNTINGTON BEACH, CALIFORNIA U.S.A.

DOOR BOLTING SYS-2 POINT

REV	DATE	BY	CHK
C	51941	20201	V
SCALE	1:1	WT.	SHEET 2 OF 2

SEE SHEET 1 FOR NOTES

STUD 8-32 UNF-3B THD 3 PLCS

THE INFORMATION AND DATA SET FORTH HEREIN IS THE PROPERTY OF THE UNITED STATES GOVERNMENT AND IS NOT TO BE REPRODUCED, STORED, TRANSMITTED, OR DISSEMINATED IN ANY MANNER WITHOUT THE EXPRESS WRITTEN PERMISSION OF THE SECRETARY OF THE AIR FORCE. THIS INFORMATION IS UNCLASSIFIED EXCEPT WHERE SHOWN OTHERWISE. THIS INFORMATION IS UNCLASSIFIED EXCEPT WHERE SHOWN OTHERWISE.

REVISED	DATE	DESCRIPTION	DATE	APPROVED
V	12/17/98	SEE ECN V FOR NOTES	T. CSIK	

REVISED	DATE	DESCRIPTION	DATE	APPROVED
47.135	26.946	-443 DOOR BOLTING SYS	9/10	SHOWN
39.85	39.85	-441		CS/A -89 EXCEPT HANDLE IS FLUSH
39.85	39.85	-440		DPP
39.85	39.85	-439	9/10	SHOWN
15.62	26.60	-437		DPP
22.72	22.72	-435	9/10	SHOWN
34.00	34.00	-433		SHOWN
6.14	6.14	-431		SHOWN
30.58	30.58	-430		SHOWN
22.72	22.72	-429	9	DPP
23.569	23.568	-427	9	DPP
26.88	26.88	-426	9	SHOWN
26.88	26.88	-425	9	DPP
25.93	25.93	-424	9	DPP
-	17.56	-423	9	SHOWN
23.00	23.00	-422	9	DPP
47.135	12.00	-420		DPP
47.135	12.00	-419		SHOWN
32.75	12.00	-417		SHOWN
22.88	12.00	-416		DPP
22.88	12.00	-415		SHOWN
37.32	12.00	-414		DPP
37.32	12.00	-413		SHOWN
17.32	34.69	-411		SHOWN
29.38	17.56	-409		SHOWN
29.38	17.44	-407		SHOWN
28.94	17.44	-405		SHOWN
28.94	19.22	-403		SHOWN
6.14	6.14	-402	9	SHOWN
4.83	4.83	-401 DOOR BOLTING SYS	9	SHOWN

1. PER FAR 45.15, PARTS WILL IDENTIFIED WITH
 1. FAA-PMA.
 2. SKYLOCK IND. INC.
 3. PART NO.
 4. AIRCRAFT ELIGIBILITY.

△△ SYSTEM HAS GREEN DOT TO INDICATE ENGAGEMENT.
 △△ USE WITH 20177-3 BACKPLATE.
 △△ HANDLE AND TEE BAR ARE RUBBER COATED BLACK.
 △△ SYSTEM HAS RED DOT TO INDICATE DISENGAGEMENT.
 △△ BOLTING SYSTEM DETENTED IN OPEN & CLOSED POSITIONS.
 △△ HANDLE TO BE SPRING LOADED CLOSED (ALL SYSTEMS).
 4. REFERENCE DECORATIVE FINISH CASE, HANDLE & TEE BAR) SATIN BRUSHED LENGTHWISE TO PART SURFACE.
 3. REFERENCE FINISH ALUM PARTS; CLEAR ANODIZE PER MIL-A-8625, TYPE II, CLASS 1.
 CRES PARTS; PASSIVATE PER AMS-QQ-P-35, TYPE II.
 2. REFERENCE MAT'L 'D' HANDLE & TEE BAR; 6061-T6/T651 PER ASTM B-221, DR EQUIV.
 ALL OTHER PARTS; 300 SERIES CRES, PER AMS-5640N, ASTM-A240, QQ-S-766, DR EQUIV.
 1. REMOVE ALL BURRS AND SHARP CORNERS.
 NOTES: UNLESS OTHERWISE SPECIFIED

DESIGNED BY JEE	4/18/98
DESIGNED D. VO	10/18/98
DESIGNED T. CSIK	10/17/98
BY P. MATSUOKA	10/18/98
BY J. VIVIRITO	10/18/98
USED BY	

SKYLOCK INDUSTRIES INCORPORATED
 HENRYOTA CALIFORNIA U.S.A.

DOOR BOLTING SYS-2 POINT

SIZE C 51941 20201

SCALE 1:1

SHEET 1 OF 2