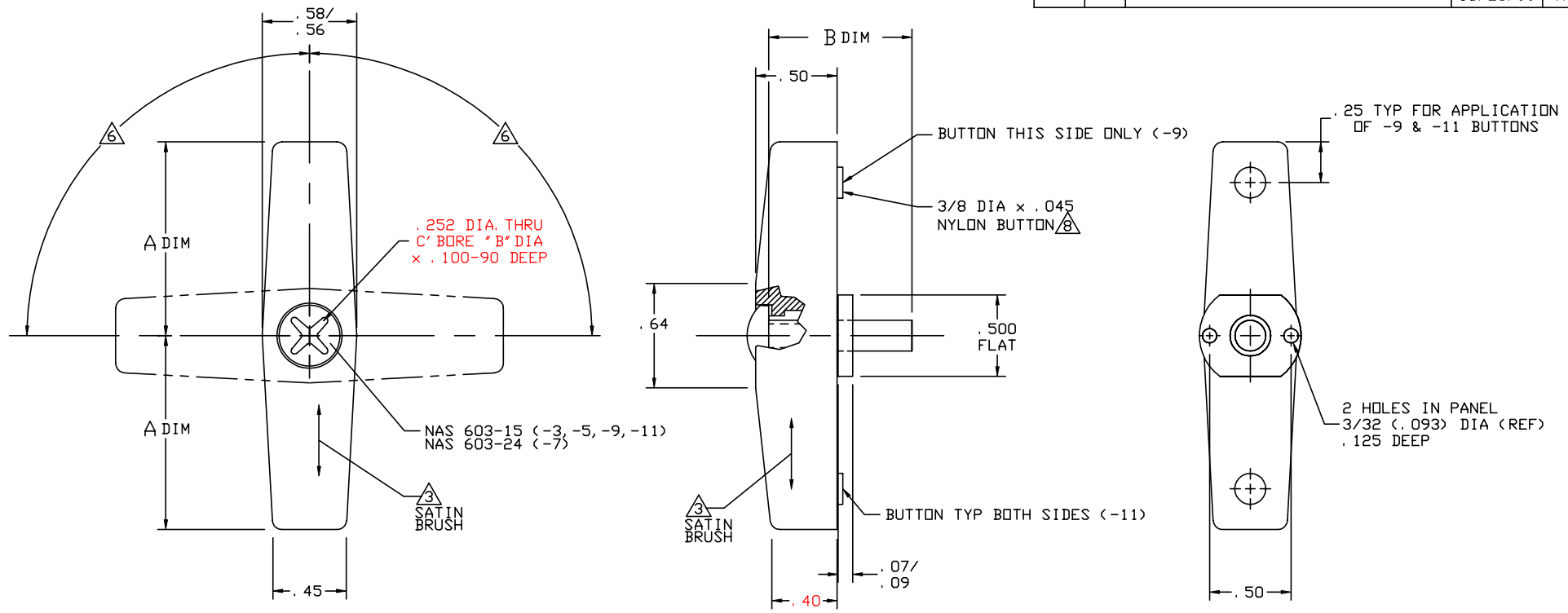


THE INFORMATION AND DESIGN HEREIN WAS ORIGINATED BY AND IS THE PROPERTY OF SKYLOCK INDUSTRIES INCORPORATED. SKYLOCK INDUSTRIES INCORPORATED RESERVES ALL PATENT, PROPRIETARY, DESIGN MANUFACTURING, REPRODUCTION, USE AND SALES RIGHTS THERE TO, AND TO ANY ARTICLE DISCLOSED THEREIN EXCEPT TO THE EXTENT RIGHTS ARE EXPRESSLY GRANTED TO OTHERS. THE FOREGOING DOES NOT APPLY TO VENDOR PROPRIETARY PARTS.

REVISIONS				
ZONE	LTR	DESCRIPTION	DATE	APPROVED
	E	SEE ECN E	10/26/99	T. CSIK



10. APPLICABLE TO FAA-PMA REPLACEMENT OR MODIFICATION PARTS ONLY. PER FAR 45.15, PARTS WILL BE IDENTIFIED WITH:
1. FAA-PMA.
  2. SKYLOCK IND. INC.
  3. PART NO.
  4. AIRCRAFT INSTALLATION ELIGIBILITY.

- △ FINISH REF.: 'R' AFTER DASH NO. INDICATES BRIGHT POLISH AND ANODIZE PER MIL-A-8625, TYPE II, CLASS 2, DYED CANDY APPLE RED.
- ⊕ BOND USING 3M "PRONTO CA7" ADHESIVE.
7. QUALIFICATION TESTED BEYOND 150,000 CYCLES
- △ DETENT 90° LEFT OR 90° RIGHT
- △ THE FOLLOWING STATIC LOAD IS FOR REFERENCE USE ONLY. IT IS PROVIDED FOR CUSTOMER ENGINEERING TO DETERMINE THE GENERAL SUITABILITY OF THE PRODUCT FOR ITS INTENDED USE. ALTHOUGH SKYLOCK IS PROVIDING THE REFERENCE STATIC LOAD, THE CUSTOMER IS ULTIMATELY RESPONSIBLE FOR CERTIFICATION OF THE PRODUCT FOR ITS SPECIFIC APPLICATION. REFERENCE STATIC LOAD: 800 LBS. MAX.
- △ DECORATIVE FINISH REF.: SATIN BUFF AS NOTED
3. FINISH REF.: ALUM PARTS; CLEAR ANODIZE PER MIL-A-8625, TYPE II, CLASS 1. CRES PARTS; PASSIVATE PER AMS-QQ-P-35, TYPE II OR EQUIV. SCREW; CAD PLATE PER QQ-P-416, TYPE II, CLASS 2.
2. MAT'L REF.: TURN; 6061-T6/T651 PER ASTM B-221, OR EQUIV. CAM; 303 CRES, COND. A, PER AMS-5640N, OR EQUIV. ALL OTHER PARTS; 300 SERIES CRES
1. REMOVE ALL BURRS AND SHARP CORNERS.
- NOTES: UNLESS OTHERWISE SPECIFIED

-3 RETAINER  
-5, -7, -9, -11 RETAINER  
 (<S/A -3 EXCEPT AS NOTED)

BDIM	ADIM	PART NO.	DESCRIPTION	MATERIAL	SIZE	APPLICATION	ITEM NO.
.94	1.19		-11 RETAINER	S/A	-3 EXCEPT AS NOTED		
.94	1.19		-9 RETAINER	S/A	-3 EXCEPT AS NOTED		
1.55	1.19		-7 RETAINER	S/A	-3 EXCEPT AS NOTED		
.94	1.625		-5 RETAINER	S/A	-3 EXCEPT AS NOTED		
.94	1.19		-3 RETAINER	△			

PARTS LIST

UNLESS OTHERWISE SPECIFIED	DRAWN BY	J. C. OCHOA	3/29/84	SKYLOCK INDUSTRIES INCORPORATED MONROVIA CALIFORNIA U. S. A.
DIMENSIONS ARE IN INCHES	CHECKED	T. CSIK	10/26/99	
TOLERANCES ON	ENGINEER	T. CSIK	10/26/99	
DECIMALS ANGLES DRILLED HOLES	MFG	P. MATSUOKA	10/26/99	
.X ± .1 ± 0° 30' AND 10387 .XX ± .03 .XXX ± .010	QC	J. VIVIRITO	10/27/99	

DO NOT SCALE THIS DRAWING

MATERIAL - FINISH USED ON SIZE CODE IDENT. NO. DRAWING NO. REV.

C 51941 20392 E

MANUFACTURE IN ACCORDANCE WITH SKYLOCK IND. INC., QUALITY CONTROL MANUAL QC.001 SCALE 2:1 VT. SHEET 1 OF 1

D  
C  
B  
A

D  
C  
B  
A

4 3 2 1

4 3 2 1