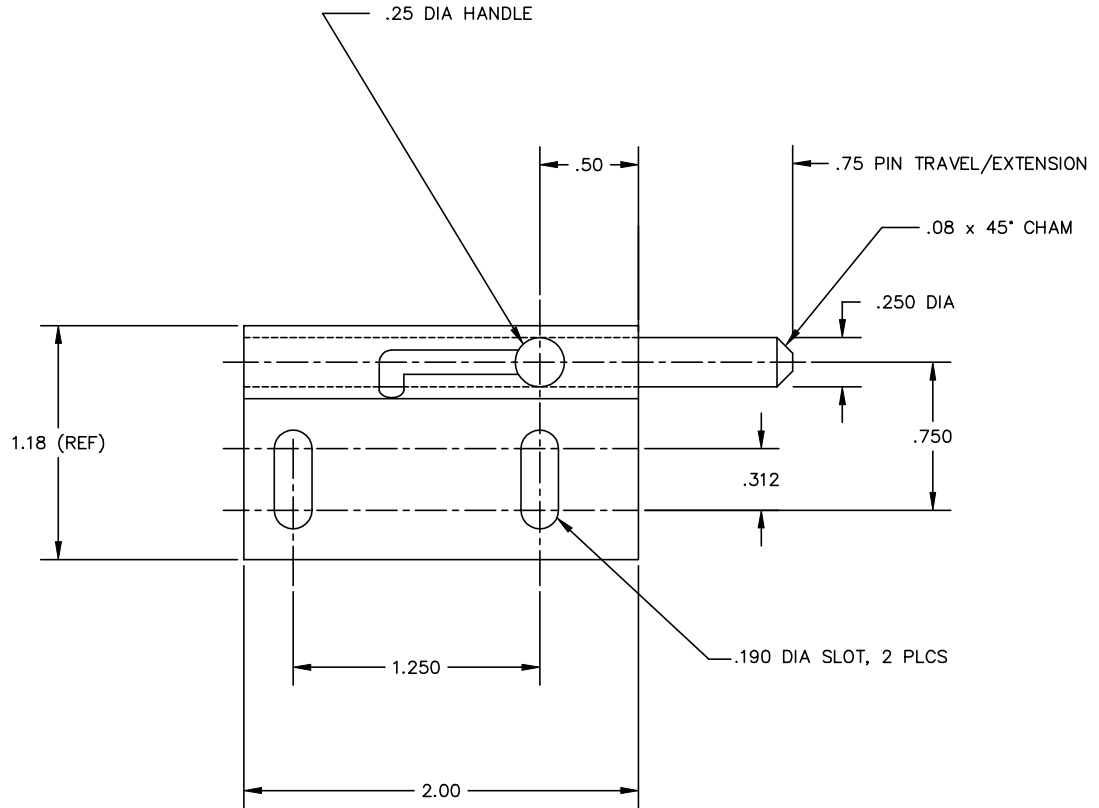
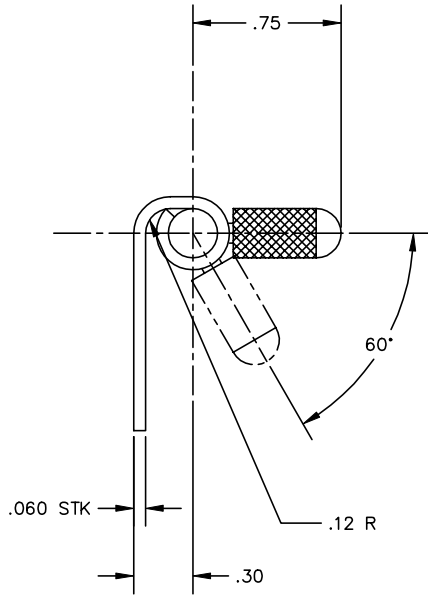


THE INFORMATION AND DESIGN HEREIN WAS ORIGINATED BY AND IS THE PROPERTY OF SKYLOCK INDUSTRIES INCORPORATED. SKYLOCK INDUSTRIES INCORPORATED RESERVES ALL PATENT, PROPRIETARY, DESIGN MANUFACTURING, REPRODUCTION, USE AND SALES RIGHTS THERE TO, AND TO ANY ARTICLE DISCLOSED THEREIN EXCEPT TO THE EXTENT RIGHTS ARE EXPRESSLY GRANTED TO OTHERS. THE FOREGOING DOES NOT APPLY TO VENDOR PROPRIETARY PARTS.

REVISIONS				
ZONE	LTR.	DESCRIPTION	DATE	APPROVED
	NC	PRODUCTION RELEASE	6.10.92	SC

NOTES: UNLESS OTHERWISE SPECIFIED

1. REMOVE ALL BURRS AND SHARP EDGES
2. MAT'L: ALL COMPONENTS: 300 SERIES CRES
3. FINISH: CLEAN AND PASSIVATE
4. BOLT IS SPRING LOADED OUTWARD - PULL AND LOCK HANDLE TO DISENGAGE



	-2	LATCH ASSY	R.H. (OPP)	
	-1	LATCH ASSY	L.H. (SHOWN)	
QTY. REQ'D	PART / IDENT NO.	DESCRIPTION	MATERIAL / SPECIFICATION	ITEM NO.
UNLESS OTHERWISE SPECIFIED: DIMENSIONS ARE IN INCHES		CONTRACT NO.	SKYLOCK INDUSTRIES INCORPORATED MONROVIA, CALIFORNIA, USA	
TOLERANCES		CUSTOMER		
DECIMALS	ANGULAR	DRAWN BY	DATE	LATCH ASSY, PIN
.XX ±.03	± 0 30'	S. CSIK		
.XXX ±.010		CHECK		
DO NOT SCALE DRAWING		DESIGN		
NEXT ASSY	FINAL ASSY	DESIGN ACTIVITY	SIZE	REV.
			C	NC
FINISH	ACT WT	CALC WT	FSCM NO.	DRAWING NO.
			51941	20775
SCALE			RELEASE DATE	SHEET
2/1			6.10.92	1 OF 1

OF SHEET

DRAWING NO.

A