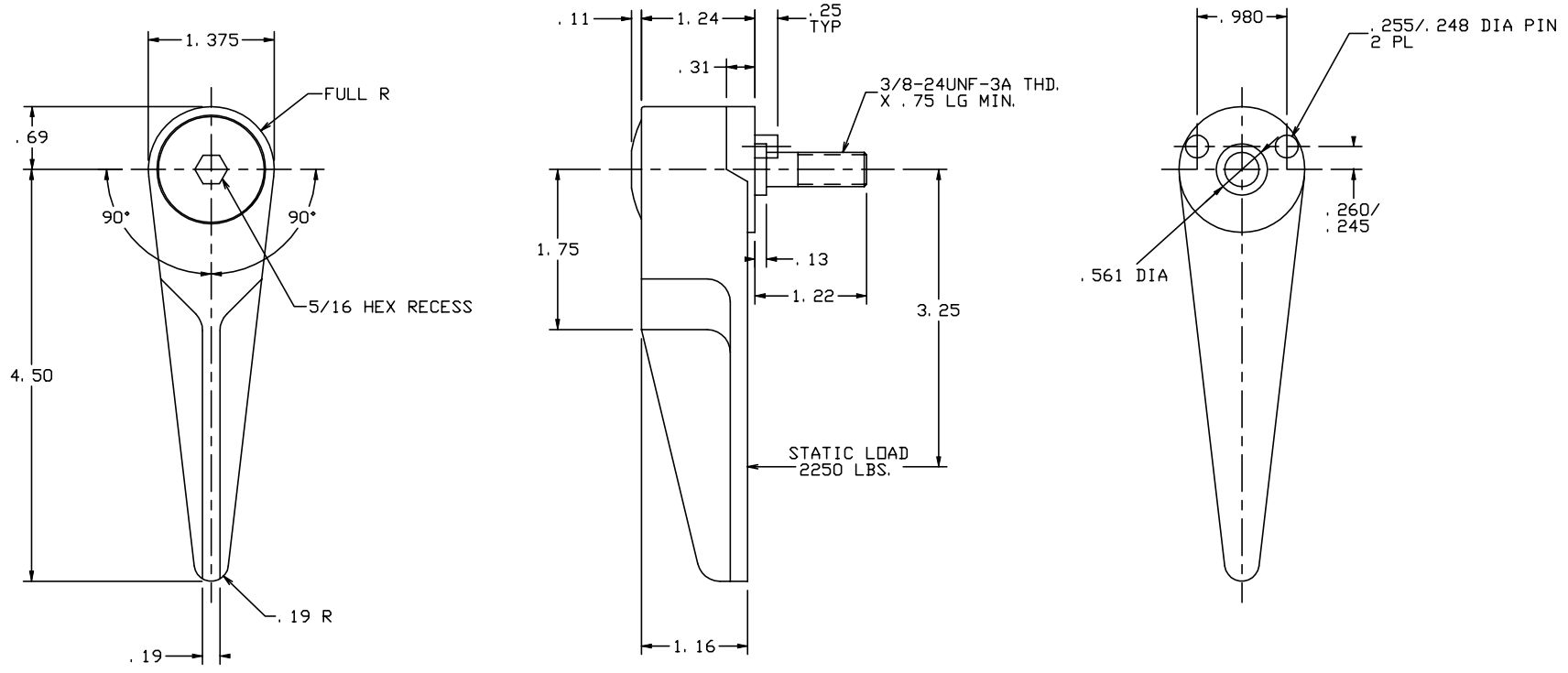


THE INFORMATION AND DESIGN HEREIN WAS ORIGINATED BY AND IS THE PROPERTY OF SKYLOCK INDUSTRIES INCORPORATED. SKYLOCK INDUSTRIES INCORPORATED RESERVES ALL PATENT, PROPRIETARY, DESIGN MANUFACTURING, REPRODUCTION, USE AND SALES RIGHTS THERE TO, AND TO ANY ARTICLE DISCLOSED THEREIN EXCEPT TO THE EXTENT RIGHTS ARE EXPRESSLY GRANTED TO OTHERS. THE FOREGOING DOES NOT APPLY TO VENDOR PROPRIETARY PARTS.

REVISIONS				
ZONE	LTR	DESCRIPTION	DATE	APPROVED
	NC	PRODUCTION RELEASE	10-24-97	T. CSIK
	A	ADDED DIM .11 (FOR DOMED HEAD)	3-30-98	T. CSIK

- NOTES: UNLESS OTHERWISE SPECIFIED.
1. REMOVE ALL BURRS AND BREAK SHARP CORNERS.
 2. MAT'L: TURN-ALUM. ALLOY; CAM-300 SERIES CRES; SHAFT-17-4PH CRES.
 3. HEAT TREAT SHAFT TO 190-210 KSI PER MIL-H-6875.
 4. FINISH: TURN-BRIGHT BUFF, AND CANDY APPLE RED ANODIZE; CAM AND SHAFT-PASSIVATE PER QQ-P-35, DRY FILM LUBRICATE BEARING SURFACES, AND SATIN BRUSH APPEARANCE SURFACES.
 5. SHAFT NEEDS NO TORQUE ADJUSTMENT; TIGHTEN AS MUCH AS POSSIBLE AT INSTALLATION.
 6. ROTATION: 180°, DETENTED EACH 90°.



-1		1/4 TURN RETAINER		
PART NO.	DESCRIPTION			
PARTS LIST				
UNLESS OTHERWISE SPECIFIED		DRAWN BY	T. CSIK	10-24-97
DIMENSIONS ARE IN INCHES		CHECKED		
TOLERANCES ON		ENGINEER		
DECIMALS ANGLES DRILLED HOLES		PROJECT		
.X ± .1 ± 0° 30' AND 10387		APPROVAL		
.XX ± .03				
.XXX ± .010				
DO NOT SCALE THIS DRAWING				
MATERIAL - FINISH	USED ON	SIZE	CODE IDENT. NO.	DRAWING NO.
		C	51941	20949
NEXT ASSY		SCALE	1: 1	VT.
FINAL ASSY		SHEET 1 OF 1		REV. A

SKYLOCK INDUSTRIES INCORPORATED
MONROVIA CALIFORNIA U. S. A.

1/4 TURN RETAINER