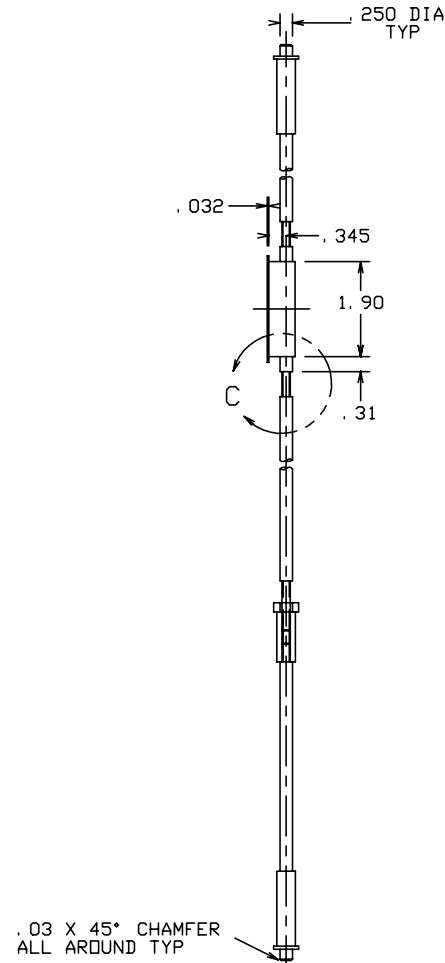
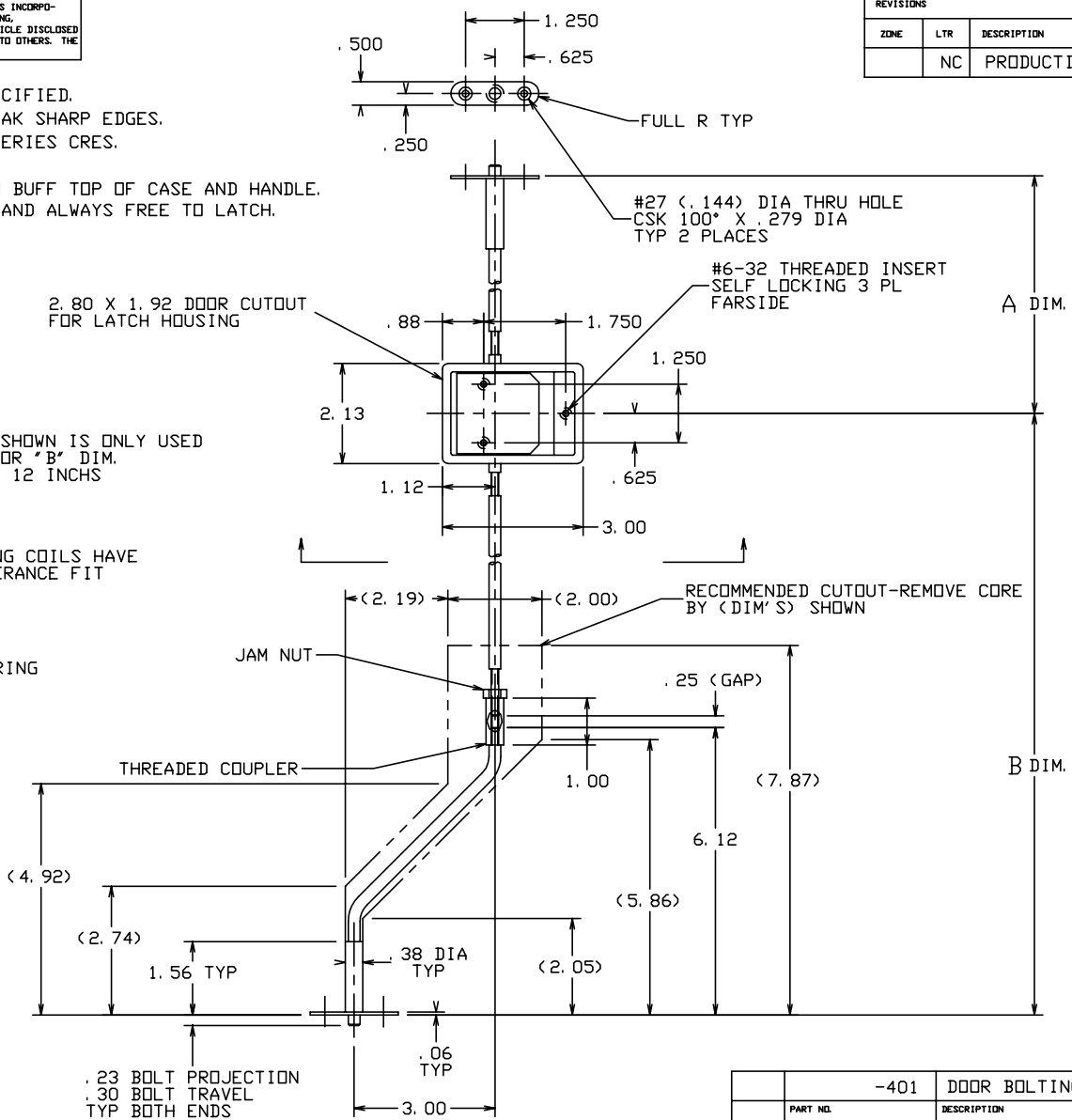
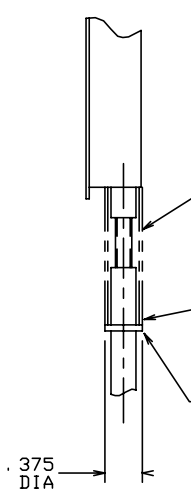


THE INFORMATION AND DESIGN HEREIN WAS ORIGINATED BY AND IS THE PROPERTY OF SKYLOCK INDUSTRIES INCORPORATED. SKYLOCK INDUSTRIES INCORPORATED RESERVES ALL PATENT, PROPRIETARY, DESIGN MANUFACTURING, REPRODUCTION, USE AND SALES RIGHTS THERE TO, AND TO ANY ARTICLE DISCLOSED THEREIN EXCEPT TO THE EXTENT RIGHTS ARE EXPRESSLY GRANTED TO OTHERS. THE FOREGOING DOES NOT APPLY TO VENDOR PROPRIETARY PARTS.

REVISIONS				
ZONE	LTR	DESCRIPTION	DATE	APPROVED
	NC	PRODUCTION RELEASE	10-23-92	T. CSIK

- NOTES: UNLESS OTHERWISE SPECIFIED.
1. REMOVE ALL BURRS AND BREAK SHARP EDGES.
  2. MAT'L: ALL COMP'S: 300 SERIES CRES.
  3. FINISH: PASSIVATE.
  4. DECORATIVE FINISH: SATIN BUFF TOP OF CASE AND HANDLE.
  5. BOLTS ARE SPRING LOADED AND ALWAYS FREE TO LATCH.



EXAMPLE:

A DIM. @ 10.0 INCHES  
B DIM. @ 10.0 INCHES

20797-401-100-100

FIRST DASH NO.	SECOND DASH NO.	THIRD DASH NO.
-401	FIRST TWO DIGITS (INCHES) THIRD DIGIT (TENTH IN.) A DIM.	FIRST TWO DIGITS (INCHES) THIRD DIGIT (TENTH IN.) B DIM.

TABULATION BLOCK

-401 DOOR BOLTING SYS.		MATERIAL SIZE SPECIFICATION		ITEM NO.
PARTS LIST				
UNLESS OTHERWISE SPECIFIED		DRAWN BY	T. CSIK	10-16-92
DIMENSIONS ARE IN INCHES		CHECKED		
TOLERANCES ON		ENGINEER		
DECIMALS ANGLES DRILLED HOLES		PROJECT		
.X ± .1 ± 0° 30' AND 10387		APPROVAL	T. CSIK	10-16-92
.XX ± .03		APPROVAL		
.XXX ± .010		DO NOT SCALE THIS DRAWING		
MATERIAL - FINISH		USED ON	SIZE	CODE IDENT. NO.
NEXT ASSY			C	51941
FINAL ASSY				20797
				NC
			SCALE	1:2 & NOTED
				SHEET 1 OF 1



DOOR BOLTING SYSTEM