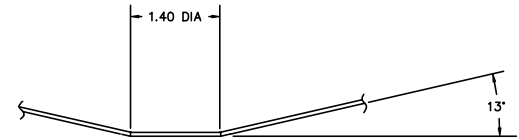
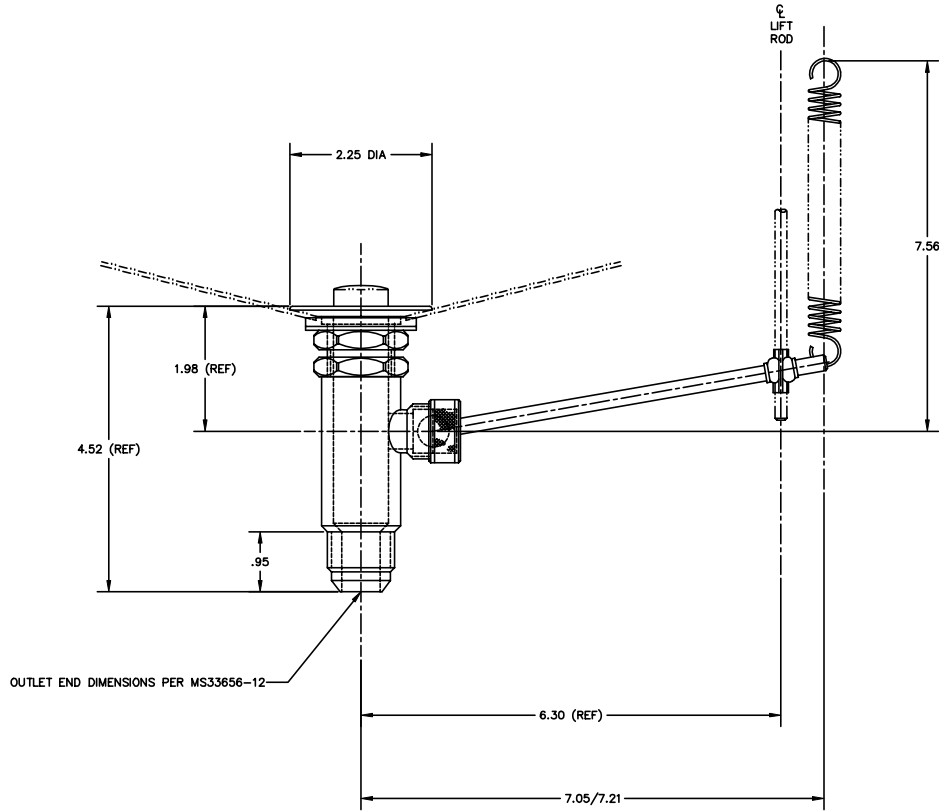


THE INFORMATION AND DESIGN HEREIN WAS ORIGINATED BY AND IS THE PROPERTY OF SKYLOCK INDUSTRIES INCORPORATED. SKYLOCK INDUSTRIES INCORPORATED RESERVES ALL PATENT, PROPRIETARY, DESIGN, MANUFACTURING, REPRODUCTION, USE AND SALES RIGHTS HEREIN, AND TO ANY ARTICLE DISCLOSED HEREIN EXCEPT TO THE EXTENT RIGHTS ARE EXPRESSLY GRANTED TO OTHERS. THE FOREGOING DOES NOT APPLY TO UNCOPY PROPRIETARY PARTS.

REVISIONS:				
ZONE	LTR.	DESCRIPTION	DATE	APPROVED
	NC	PRODUCTION RELEASE	9.22.93	SC

- NOTES: UNLESS OTHERWISE SPECIFIED
1. REMOVE ALL BURRS AND SHARP EDGES
 2. MATL: SINK FLANGE, BODY, DRAIN TUBE, ACTUATING ROD, AND POPPET; CRES; SEALS AND GASKETS; RUBBER; ACTUATING BALL AND HOUSING; NYLON
 3. FINISH: ALL VISIBLE SURFACES SHALL BE SATIN BRUSHED
 4. TENSION INCLUDED WITH ASSY



SINK-DRAIN CUTOUT

QTY REQD		PART / IDENT NO.		DESCRIPTION		MATERIAL / SPECIFICATION		ITEM NO.
	1	-401		DRAIN ASSY				
UNLESS OTHERWISE SPECIFIED: DIMENSIONS ARE IN INCHES				CONTRACT NO.		SKYLOCK INDUSTRIES INCORPORATED MONROVA, CALIFORNIA, USA		
TOLERANCES		ANGULAR		DATE		DRAWN BY		
.001		.001		9.22.93		S. CSIK		
CHECK				DESIGN		DRAWN BY		
NEXT ASSY				FINAL ASSY		DESIGN		
USED ON				DESIGN ACTIVITY		SCALE		
FINISH				ACT WT		GALC WT		
				CUSTOMER		SIZE		
						FORM NO.		
						DRAWING NO.		
						90079		
						SCALE		
						1/1		
						RELEASE DATE		
						9.22.93		
						SHEET		
						1 OF		
						1		