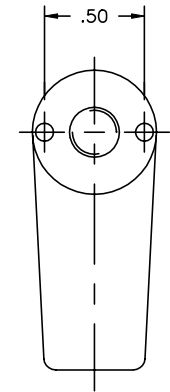
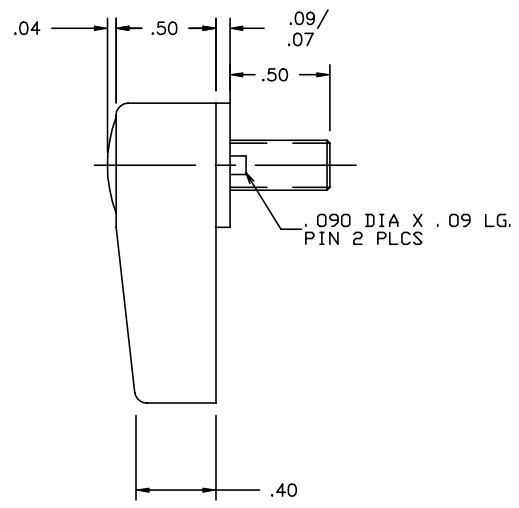
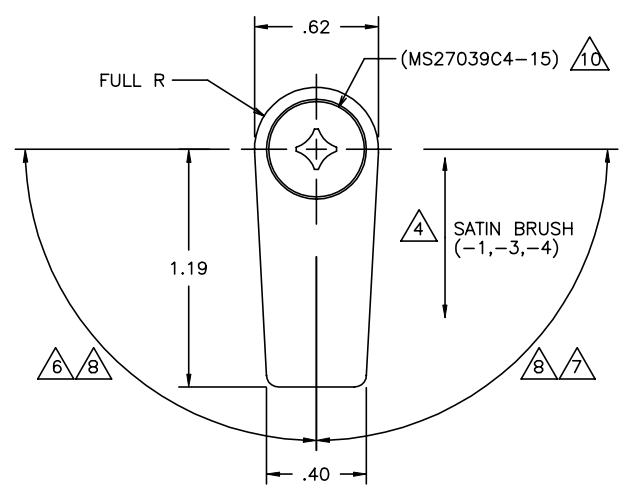


THE INFORMATION AND DESIGN HEREIN WAS ORIGINATED BY AND IS THE PROPERTY OF SKYLOCK INDUSTRIES INCORPORATED. SKYLOCK INDUSTRIES INCORPORATED RESERVES ALL PATENT, PROPRIETARY, DESIGN MANUFACTURING, REPRODUCTION, USE AND SALES RIGHTS THERE TO, AND TO ANY ARTICLE DISCLOSED THEREIN EXCEPT TO THE EXTENT RIGHTS ARE EXPRESSLY GRANTED TO OTHERS. THE FOREGOING DOES NOT APPLY TO VENDOR PROPRIETARY PARTS.

REVISIONS				
ZONE	LTR	DESCRIPTION	DATE	APPROVED
	NC	PRODUCTION RELEASE	9-21-90	S. CSIK
	A	ADDED -5/-6	3-26-98	T. CSIK
	B	SEE ECN B		



TYPICAL RETAINER

11. APPLICABLE TO FAA-PMA REPLACEMENT OR MODIFICATION PARTS ONLY. PER FAR 45.15, PARTS WILL BE IDENTIFIED WITH:
1. FAA-PMA.
  2. SKYLOCK IND. INC.
  3. PART NO.
  4. AIRCRAFT INSTALLATION ELIGIBILITY.

- 10 FINISH REF.: GLASS BEAD PEEN HEAD OF SCREW.
- 9 DECORATIVE FINISH REF. : BRIGHT POLISH, AND ANODIZE PER MIL-A-8625, TYPE II, CLASS 2, DYED CANDY APPLE RED.
- 8 180° ROTATION, DETENTED AT EACH 90°.
- 7 ROTATION 90° RIGHT HAND, DETENTED AT EACH 90°
- 6 ROTATION 90° LEFT HAND, DETENTED AT EACH 90°
- 5. THE FOLLOWING STATIC LOAD IS FOR REFERENCE USE ONLY. IT IS PROVIDED FOR CUSTOMER ENGINEERING TO DETERMINE THE GENERAL SUITABILITY OF THE PRODUCT FOR ITS INTENDED USE. ALTHOUGH SKYLOCK IS PROVIDING THE REFERENCE STATIC LOAD, THE CUSTOMER IS ULTIMATELY RESPONSIBLE FOR CERTIFICATION OF THE PRODUCT FOR ITS SPECIFIC APPLICATION. REFERENCE STATIC LOAD: 1300 LBS. MAX.
- 4 DECORATIVE FINISH REF.: SATIN BRUSH DIRECTION NOTED & CLEAR ANODIZE PER MIL-A-8625, TYPE II, CLASS 1.

3. FINISH REF.: ALUM PARTS; ANODIZE PER MIL-A-8625. CRES PARTS; PASSIVATE PER AMS-QQ-P-35. SCREW; CAD PLATE PER QQ-P-416, TYPE II, CLASS 2 .
  2. MAT'L REF.: TURN; 6061-T6/T651 PER ASTM B-221, OR EQUIV. CAM; 303 CRES, COND. A, PER AMS-5640N OR EQUIV.
  1. REMOVE ALL BURRS AND BREAK SHARP EDGES.
- NOTES: UNLESS OTHERWISE SPECIFIED.

	-6	1/4 TURN RETAINER	7 9	120683-206
	-5	1/4 TURN RETAINER	6 9	120683-205
	-4	1/4 TURN RETAINER	7 4	120683-204
	-3	1/4 TURN RETAINER	6 4	120683-203
	-1	1/4 TURN RETAINER	8 4	120683-201

PARTS LIST			
PART NO.	DESCRIPTION	MATERIAL	SIZE APPLICATION MAKE FROM
UNLESS OTHERWISE SPECIFIED			
DIMENSIONS ARE IN INCHES		DRAWN BY S. CSIK	9-21-90
TOLERANCES ON		CHECKED T. CSIK	9/10/99
DECIMALS	ANGLES DRILLED HOLES	ENGINEER T. CSIK	9/10/99
.XX .1	0° 30' AND 10387	MFG P. MATSUOKA	9/14/99
.XXX .010		Q.C. J. VIVIRITO	9/15/99
DO NOT SCALE THIS DRAWING			
MATERIAL - FINISH		USED ON	
MANUFACTURE IN ACCORDANCE WITH SKYLOCK IND. INC. QUALITY CONTROL MANUAL QC.001		SIZE C	CODE IDENT. NO. 51941
		DRAWING NO. 20683	REV. B
SCALE 2:1		WT.	SHEET 1 OF 1

SKYLOCK INDUSTRIES INCORPORATED  
MONROVIA CALIFORNIA U. S. A.

20683 RETAINER