

THE INFORMATION AND DESIGN HEREIN WAS ORIGINATED BY AND IS THE PROPERTY OF SKYLOCK INDUSTRIES INCORPORATED. SKYLOCK INDUSTRIES INCORPORATED RESERVES ALL PATENT, PROPRIETARY, DESIGN MANUFACTURING, REPRODUCTION, USE AND SALES RIGHTS THERE TO, AND TO ANY ARTICLE DISCLOSED THEREIN EXCEPT TO THE EXTENT RIGHTS ARE EXPRESSLY GRANTED TO OTHERS. THE FOREGOING DOES NOT APPLY TO VENDOR PROPRIETARY PARTS.

REVISIONS				
ZONE	LTR	DESCRIPTION	DATE	APPROVED
	G	REDRAWN, ADDED -17	7-31-95	S. CSIK
	H	REVISED NOTE 7, WAS DECORATIVE FINISH: BRIGHT POLISH AND CANDY APPLE RED ANODIZE - ADD 'R' AFTER PART NUMBER (EXAMPLE 20213-1-R).	4-2-96	T. CSIK
	J	SEE ECN J		

NOTES: UNLESS OTHERWISE SPECIFIED.

1. REMOVE ALL BURRS AND BREAK SHARP EDGES.
2. MAT'L REF.: TURN; 6061-T6/T651 PER ASTM B-221 OR EQUIV.
CAM; 303 CRES, COND. A, PER AMS-5640N, OR EQUIV.
3. THE FOLLOWING STATIC LOAD IS FOR REFERENCE USE ONLY. IT IS PROVIDED FOR CUSTOMER ENGINEERING TO DETERMINE THE GENERAL SUITABILITY OF THE PRODUCT FOR ITS INTENDED USE. ALTHOUGH SKYLOCK IS PROVIDING THE REFERENCE STATIC LOAD, THE CUSTOMER IS ULTIMATELY RESPONSIBLE FOR CERTIFICATION OF THE PRODUCT FOR ITS SPECIFIC APPLICATION. REFERENCE STATIC LOAD: 600 LBS. MAX.
4. REMOVED.
5. 180° ROTATION DETENTED AT 90°.
6. DECORATIVE FINISH REF.: SATIN BRUSH DIRECTION NOTED AND CLEAR ANODIZE PER MIL-A-8625, TYPE II, CLASS 1.
7. DECORATIVE FINISH REF.: BRIGHT POLISH AND ANODIZE PER MIL-A-8625, TYPE II, CLASS 2, DYED CANDY APPLE RED.
8. DECORATIVE FINISH REF.: BRIGHT POLISH AND ANODIZE PER MIL-A-8625, TYPE II, CLASS 2, DYED GREEN.
9. FINISH REF.: CAM; PASSIVATE PER AMS-QQ-P-35, TYPE II, OR EQUIV.
10. APPLICABLE TO FAA-PMA REPLACEMENT OR MODIFICATION PARTS ONLY.
PER FAR 45.15, PARTS WILL BE IDENTIFIED WITH:
 1. FAA-PMA.
 2. SKYLOCK IND. INC.
 3. PART NO.
 4. AIRCRAFT INSTALLATION ELIGIBILITY.

1. 19	-17	RETAINER	6	120213-217
1. 19	-15	RETAINER	8	120213-215
2. 00	-13	RETAINER	7	120213-213
. 850	-11	RETAINER	6	120213-211
1. 19	-9	RETAINER	7	120213-209
1. 19	-7	RETAINER	7	120213-207
1. 19	-5	RETAINER	6	120213-205
1. 19	-3	RETAINER	7	120213-203
1. 19	-1	RETAINER	6	120213-201

ADIM	PART NO.	DESCRIPTION	MATERIAL	SIZE	SPECIFICATION	MAKE FROM
PARTS LIST						
UNLESS OTHERWISE SPECIFIED			DRAWN BY S. CSIK		7-31-95	
DIMENSIONS ARE IN INCHES			CHECKED T. CSIK		9/1/99	
TOLERANCES ON			ENGINEER T. CSIK		9/1/99	
DECIMALS ANGLES DRILLED HOLES			Q. C. P. MATSUOKA		9/2/99	
.X ± .1 ± 0° 30' AND 10387			MFG. J. VIVIRITO		9/1/99	
.XX ± .03						
.XXX ± .010						
DO NOT SCALE THIS DRAWING						
MATERIAL - FINISH			USED ON		SIZE CODE IDENT. NO. DRAWING NO. REV.	
NEXT ASSY					C 51941 20213 J	
FINAL ASSY					SCALE 1: 1 WT. SHEET 1 OF 2	

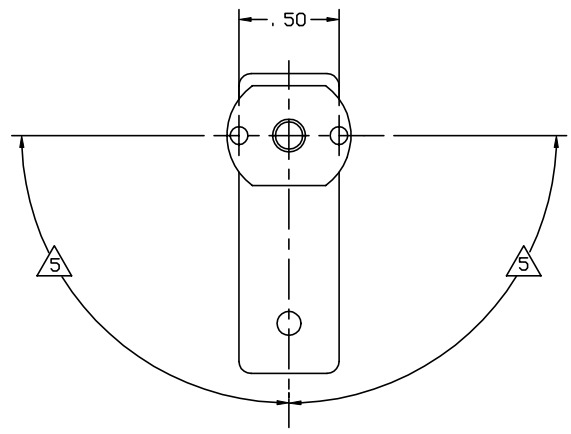
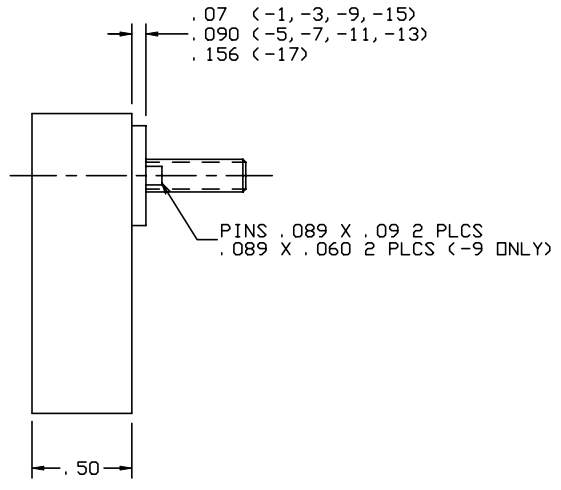
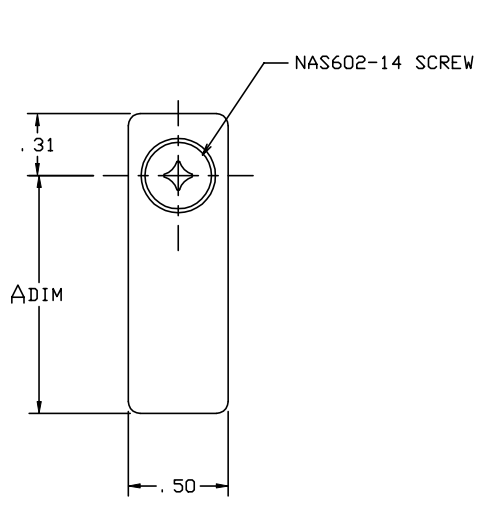


SKYLOCK INDUSTRIES INCORPORATED
MONROVIA CALIFORNIA U. S. A.


20213 RETAINER

THE INFORMATION AND DESIGN HEREIN WAS ORIGINATED BY AND IS THE PROPERTY OF SKYLOCK INDUSTRIES INCORPORATED. SKYLOCK INDUSTRIES INCORPORATED RESERVES ALL PATENT, PROPRIETARY, DESIGN MANUFACTURING, REPRODUCTION, USE AND SALES RIGHTS THERE TO, AND TO ANY ARTICLE DISCLOSED THEREIN EXCEPT TO THE EXTENT RIGHTS ARE EXPRESSLY GRANTED TO OTHERS. THE FOREGOING DOES NOT APPLY TO VENDOR PROPRIETARY PARTS.

REVISIONS				
ZONE	LTR	DESCRIPTION	DATE	APPROVED
		SEE SHT. 1 FOR NOTES		



TYPICAL RETAINER


SKYLOCK INDUSTRIES INCORPORATED
 MONROVIA CALIFORNIA U. S. A.

20213 RETAINER

SIZE	CODE IDENT. NO.	DRAWING NO.	REV.
C	51941	20213	J
SCALE 1: 1		VT.	SHEET 2 OF 2