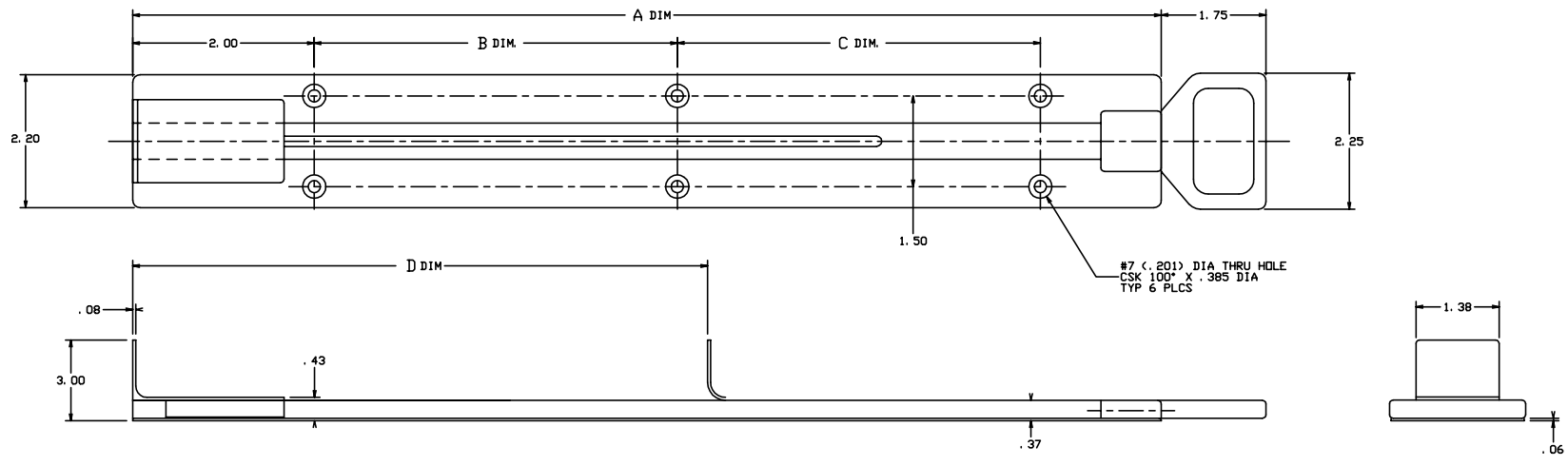


THE INFORMATION AND DESIGN HEREIN WAS ORIGINATED BY AND IS THE PROPERTY OF SOLDEX INDUSTRIES INCORPORATED. SOLDEX INDUSTRIES INCORPORATED RESERVES ALL PATENT, PROPRIETARY, DESIGN MANUFACTURING INFORMATION, AND SALES RIGHTS HEREIN, AND TO ANY ARTICLES DEVELOPED THEREIN EXCEPT TO THE EXTENT RIGHTS ARE EXPRESSLY GRANTED TO OTHERS. THE FOREGOING DOES NOT APPLY TO NON-PATENTABLE IDEAS.

REVISIONS				
ZONE	LTR	DESCRIPTION	DATE	APPROVED
NC		PRODUCTION RELEASE	9-13-94	T. C.

- NOTES: UNLESS OTHERWISE SPECIFIED.
1. REMOVE ALL BURRS AND BREAK SHARP EDGES.
 2. MAT'L: TRACK; ALUM ALLOY, HANDLE, PLUG, BRACKET RETAINERS; PLASTIC, BUMPER; RUBBER, ALL OTHER COMPONENTS; ST. STL.
 3. FINISH: ALUM.; CLEAR ANODIZE PER MIL-A-8625, TYPE II, CLASS I. ST. STL.; PASSIVATE PER QQ-P-35.
 4. HANDLE AND BRACKET ARE SPRING LOADED TO THE RETRACTED POSITION.



-403	EXTRACTOR ASSY	29.20	12.00	12.00	15.50			
-401	EXTRACTOR ASSY	31.20	13.60	13.60	17.50			
PART NO.	DESCRIPTION	A DIM.	B DIM.	C DIM.	D DIM.			
PARTS LIST								
UNLESS OTHERWISE SPECIFIED		DRAWN BY	T. CSIK	9-13-94	 SOLDEX INDUSTRIES INCORPORATED MORNINGVIEW, CALIFORNIA			
DIMENSIONS ARE IN INCHES		CHECKED	S. CSIK	9-13-94				
TELEDIMENSIONS ON		ENGINEER	T. CSIK	9-13-94				
DECIMALS ANGLES DRILLED HOLES		PROJECT						
DO NOT SCALE THIS DRAWING		APPROVAL	D. SHORT	9-13-94	EXTRACTOR ASSY			
MATERIAL - FINISH		USED ON			SIZE	CODE IDENT. NO.	DRAWING NO.	REV.
NEXT ASSY					D	51941	20903	NC
FINAL ASSY					SCALE	NONE	VS.	SHEET 1 OF 1