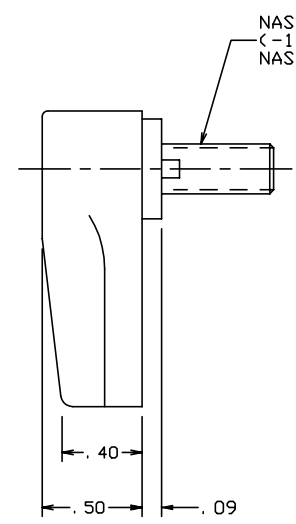
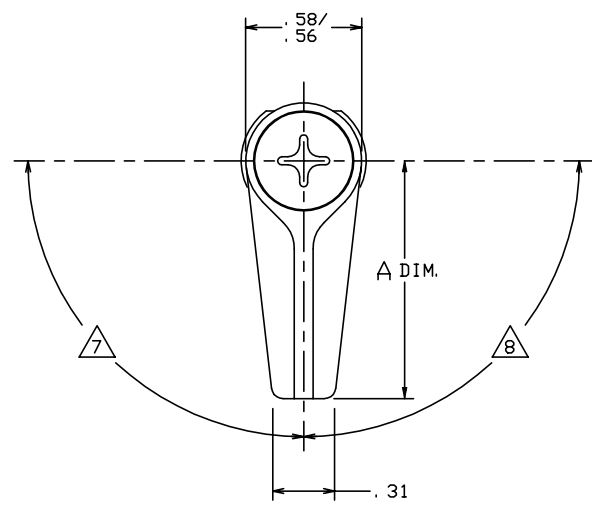


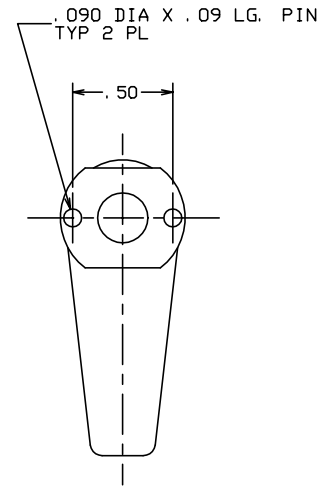
THE INFORMATION AND DESIGN HEREIN WAS ORIGINATED BY AND IS THE PROPERTY OF SKYLOCK INDUSTRIES INCORPORATED. SKYLOCK INDUSTRIES INCORPORATED RESERVES ALL PATENT, PROPRIETARY, DESIGN MANUFACTURING, REPRODUCTION, USE AND SALES RIGHTS THERE TO, AND TO ANY ARTICLE DISCLOSED THEREIN EXCEPT TO THE EXTENT RIGHTS ARE EXPRESSLY GRANTED TO OTHERS. THE FOREGOING DOES NOT APPLY TO VENDOR PROPRIETARY PARTS.

REVISIONS				
ZONE	LTR	DESCRIPTION	DATE	APPROVED
	NC	PRODUCTION RELEASE	7-1-98	T. CSIK
	A	SEE ECN A	10-8-98	T. CSIK

- NOTES: UNLESS OTHERWISE SPECIFIED.
- REMOVE ALL BURRS AND BREAK SHARP EDGES.
 - REFERENCE MAT'L: TURN; 7075-T6 ALUM. ALLOY, CAM; 300 SERIES CRES.
 - REFERENCE FINISH: TURN; ANODIZE PER MIL-A-8625, CRES; PASSIVATE PER AMS-QQ-P-35.
 - REMOVED.
 - REFERENCE DECORATIVE FINISH: SATIN BRUSH, AND CLEAR ANODIZE PER MIL-A-8625, TYPE II, CLASS 1.
 - REFERENCE DECORATIVE FINISH: BRIGHT BUFF, AND CANDY APPLE RED ANODIZE PER MIL-A-8625 TYPE II, CLASS 2.
 - ROTATION: 90° LEFT HAND, DETENTED EVERY 90°.
 - ROTATION: 90° RIGHT HAND, DETENTED EVERY 90°.



NAS2804-11 SCREW REF (-1 THRU -4)
NAS517-4-9 SCREW REF(-5)



QTY	PART NO.	DESCRIPTION	REV.	MAKE FROM
1. 62	-5	RETAINER	7/5	(870069-415) 120748-5
1. 19	-4	RETAINER	8/6	(870069-414) 120748-4
1. 19	-3	RETAINER	7/6	(870069-413) 120748-3
1. 19	-2	RETAINER	8/5	(870069-412) 120748-2
1. 19	-1	RETAINER	7/5	(870069-411) 120748-1

PARTS LIST		UNLESS OTHERWISE SPECIFIED		DRAWN BY T. CSIK 7-1-98		SKYLOCK INDUSTRIES INCORPORATED MONROVIA CALIFORNIA U. S. A.		
DIMENSIONS ARE IN INCHES		TOLERANCES ON		CHECKED E. WELSH 9-22-98				
DECIMALS ANGLES DRILLED HOLES		.X ± .1 ± 0° 30' AND 10387		ENGINEER T. CSIK 10-8-98				
.XX ± .03		.XXX ± .010		MFG P. M. 10-8-98				
DO NOT SCALE THIS DRAWING				QC J. V. 9-23-98		RETAINER		
MATERIAL - FINISH		USED ON		SIZE C	CODE IDENT. NO. 51941		DRAWING NO. 20748	REV. A
NEXT ASSY				SCALE 2: 1			VT.	SHEET 1 OF 1
MANUFACTURE IN ACCORDANCE WITH SKYLOCK QUALITY CONTROL MANUAL QC. 001								